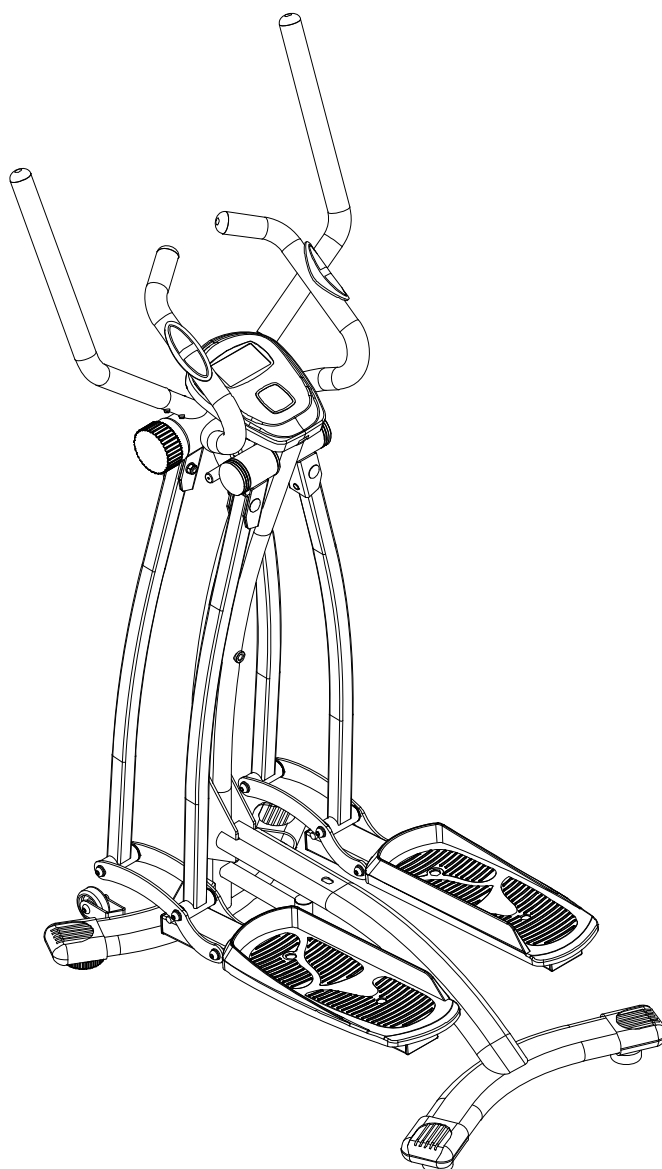


Cloud Walker™



IMPORTANT: Read all instructions carefully before assembling and/or using this product. Retain this owner's manual for future reference. The specifications of this product may vary from this photo and is subject to change without notice.



PLEASE DO NOT RETURN THIS PRODUCT TO THE STORE.

STOP. Contact customer service if you have any questions regarding assembly or proper operation of the machine.

Email us at:

Service@paradigmhw.com

**Hours: 8:00 AM to 5:00 PM (PST)
Monday thru Friday**

Or call us at:

1-844-641-7920

TABLE OF CONTENT

SERVICE	2
LABEL PLACEMENT	3
IMPORTANT SAFETY GUIDELINES	4
OVERVIEW DRAWING	5
PARTS LIST	6
ASSEMBLY	7
CONSOLE	9
STORAGE	10
TRANSPORTATION	11
WARRANTY	12
PARTS REQUEST FORM	13

SERVICE

IMPORTANT: FOR NORTH AMERICA ONLY

For damaged or defective product, questions, replacement parts or any other service support, please contact our customer service department by the below methods:

For The Best Service, please Email:
service@paradigmhw.com

Response Time: 1-2 Business Days

Emailing us with the information above will be the best method to receive a response during peak business hours

Website:
www.paradigmhw.com

Toll-Free:

1-844-641-7920

(8:00 AM - 5:00 PM Pacific Standard Time, Monday thru Friday)

Response time may vary via calling

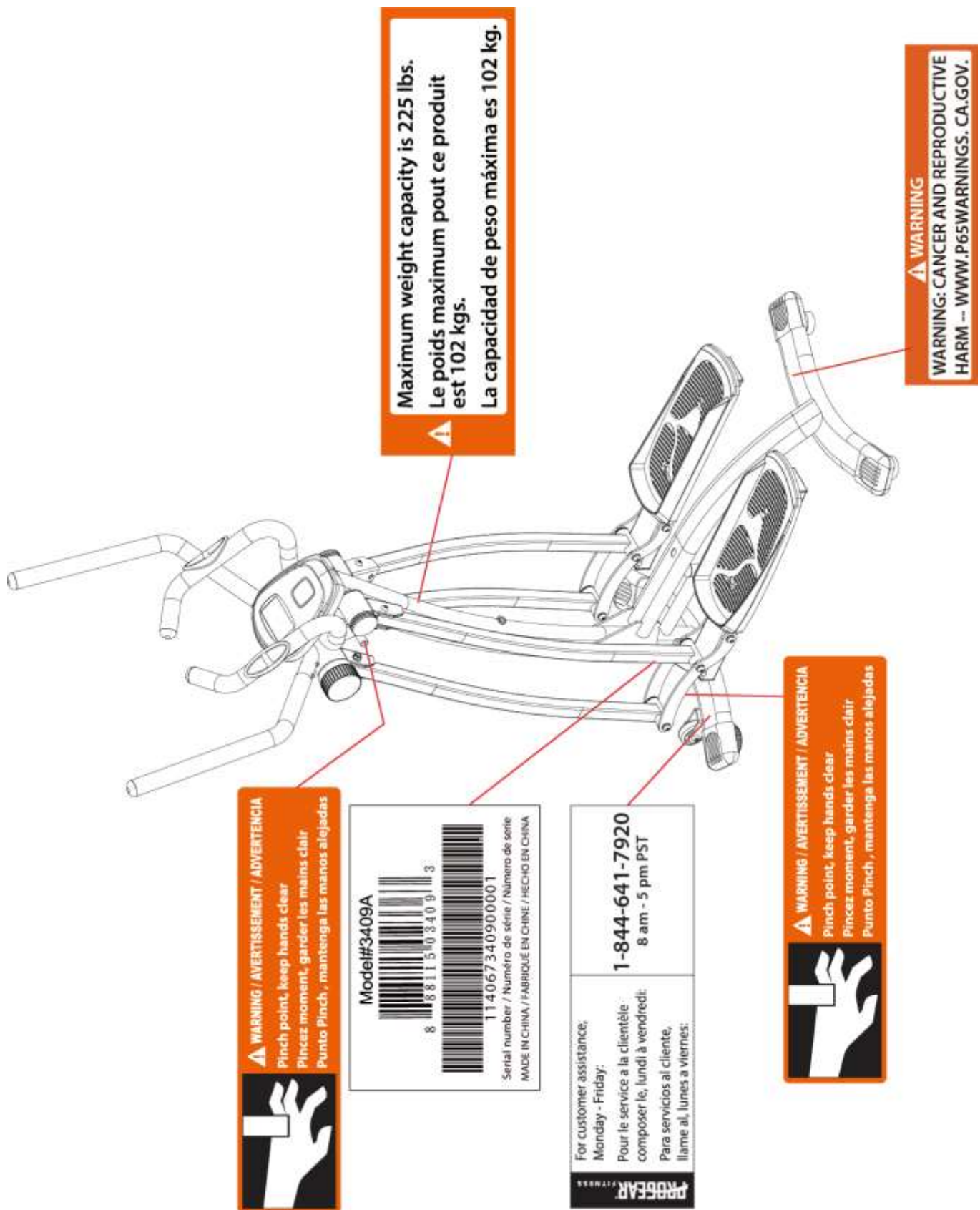
Please have the following information ready when requesting for service:

- Your name
- Phone number
- Model number
- Serial number
- Part number
- Proof of Purchase

For damaged or defective product please contact our customer service before returning to the store.

Paradigm Health & Wellness, Inc.
1189 Jellick Ave.
City of Industry, CA 91748, USA

LABEL PLACEMENT



IMPORTANT SAFETY GUIDELINES

Basic precautions should always be followed, including the following safety instructions when using this equipment. Read all the instructions before using this equipment.

1. Before exercising and to avoid injuring your muscles, it is highly recommended that you perform warm-up exercises for each muscle group.
2. Make sure all the components are undamaged and are in working order before using. This equipment should be placed on a stable, flat surface. Using a mat or similar material on the ground underneath the equipment is recommended.
3. Please wear proper clothes and shoes when using this equipment. Do not wear loose clothing that may get caught by any part of the equipment.
4. Only perform maintenance or adjustments that are instructed in this manual. Should any problems arise, discontinue use and consult with customer service at Paradigm.
5. **Be careful when stepping on or stepping off of the pedals.** Always hold onto the stationary handlebars while stepping on or off of the Cloud Walker™. Always step on and off from the rear, never from the sides.
6. Keep dry - do not operate in wet or moist conditions.
7. Do not use the equipment outdoors.
8. This equipment is for household use only.
9. Only one person should be on the equipment at a time.
10. Keep children and pets away from the product at all times.
11. This machine is designed for adults only.
12. This product requires a minimum of 6 square feet of space for safe operation.
13. If you feel any chest pains, nausea, dizziness, or shortness of breath, you should stop exercising immediately and consult with your physician before continuing.
14. **The maximum weight capacity for this product is 225 lbs / 102 kgs.**
15. **WARNING: CANCER AND REPRODUCTIVE HARM--**WWW.P65WARNINGS.CA.GOV.

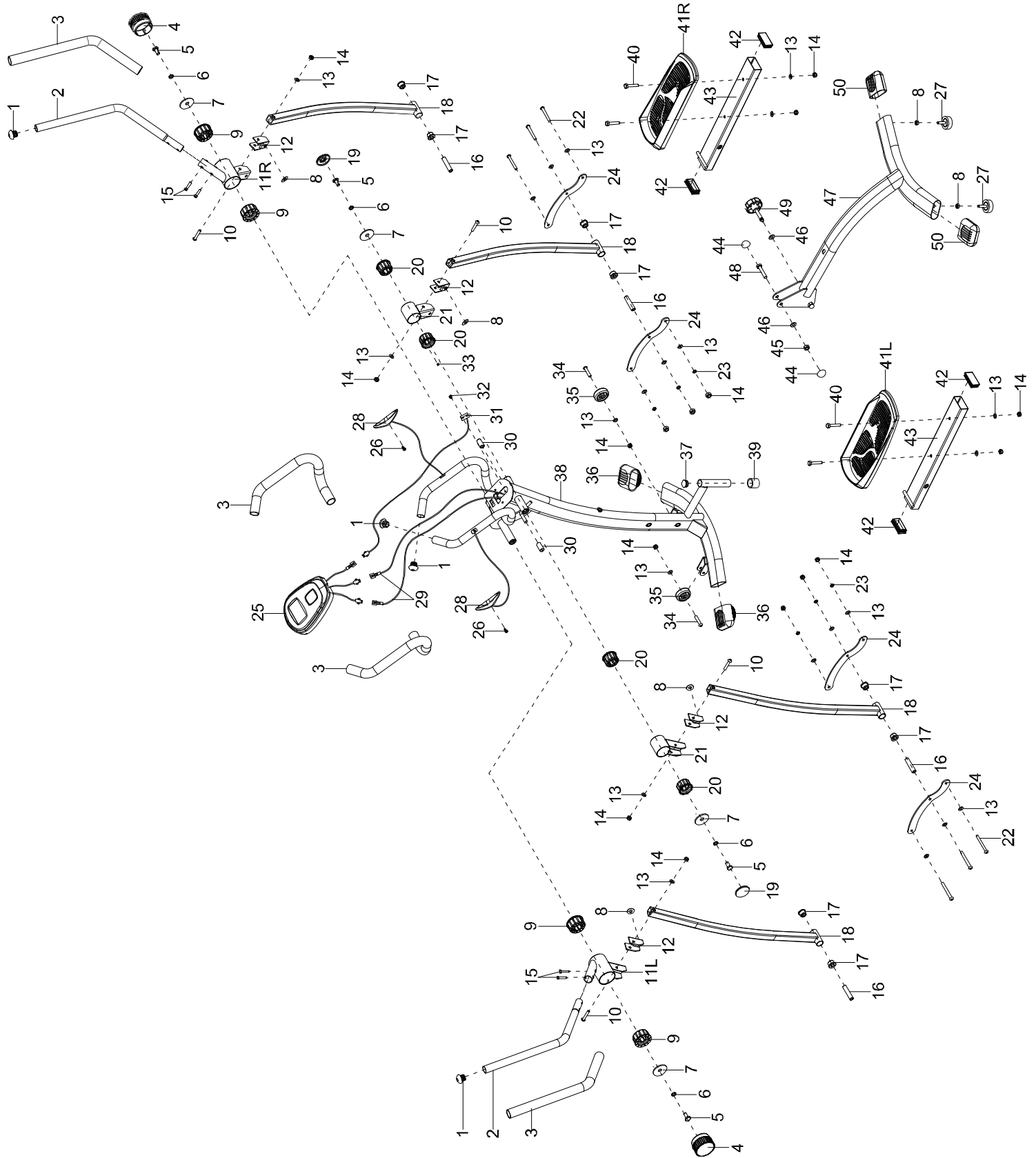
WARNING: Before beginning any exercise program consult with your physician. This is especially important for the people who are over 35 years old or who have pre-existing health problems.

CAUTION: Read all instructions carefully before operating this product. Retain this Owner's Manual for future reference.



The product weighs more than 44 lbs. It is heavily recommended that at least 2 persons.

OVERVIEW DRAWING

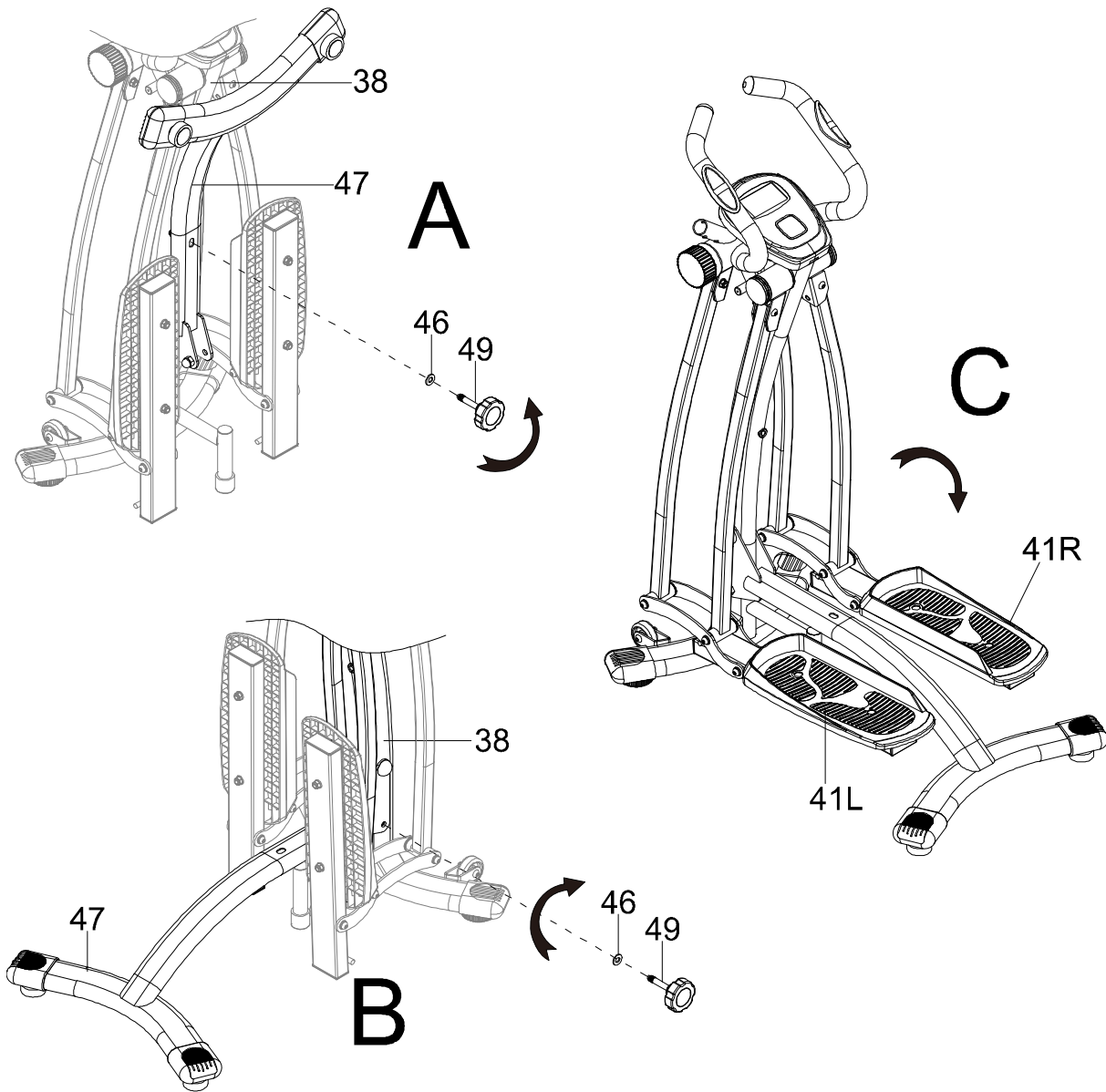


PART LIST

No.	Description	Qty
1	Round Cap $\phi 31 \times 26$	4
2	Handlebar	2
3	Foam $\phi 23 \times 3 \times 490$	4
4	Round Cap $\phi 69 \times \phi 50$	2
5	Hex Bolt M10*25*S17	4
6	Spring Washer d10	4
7	Washer d10.2* $\phi 50 \times 3$	4
8	Hex Nut M8*H5.5*S14	2
9	Bushing $\phi 60 \times 29$	4
10	Carriage Bolt M8*47*12*H3	4
11L	Handlebar Bracket	1
11R	Handlebar Bracket	1
12	U Bracket 55*35*31.5	4
13	Washer d8* $\phi 16 \times 1.5$	22
14	Nylon Nut M8*H7.5*S13	16
15	Screw M6*27*15*S5	4
16	Bushing $\phi 8.2 \times \phi 13 \times 62$	4
17	Cap $\phi 25 \times 2.65 \times \phi 21.5 \times 12.35 \times \phi 13.1$	8
18	Swing Post	4
19	Cap $\phi 50 \times 15 \times S17$	2
20	Bushing $\phi 50 \times 29$	4
21	Bracket	2
22	Hex Socket Pan Head Screw M8*85*12*S5	6
23	Spring Washer d8	6
24	S Bracket	4
25	Console	1

No.	Description	Qty
26	Phillips Head Screw ST4*19* $\phi 7$	2
27	Leveler $\phi 43 \times 14 \times M8 \times 25$	2
28	Hand Pulse Sensors	2
29	Hand Pulse Sensor Wire	2
30	Bushing $\phi 15 \times 30$	2
31	Sensor	1
32	Phillips Pan Head Screw ST4.8*13* $\phi 8$	1
33	Round Magnet $\phi 6 \times 5$	1
34	Hex Socket Head Screw M8*40*15*S5	2
35	Round Wheel $\phi 48 \times \phi 8 \times 16.5$	2
36	Oval Cap 77*79*48.5	2
37	Round Cap $\phi 25 \times 16$	1
38	Main Frame	1
39	Bushing $\phi 32 \times \phi 25 \times 28$	1
40	Socket Hex Bolt M8*45*20*S14	4
41L	Left Pedal	1
41R	Right/Left Pedal	1
42	Square Cap J60*30*15	4
43	Pedal Tube	2
44	Cap	2
45	Nylon Nut M10*H9.5*S17	1
46	Washer d10* $\phi 20 \times 2$	2
47	Rear Stabilizer	1
48	Hex Bolt M10*50*15*S17	1
49	Round Knob M10*53*14* $\phi 58$	1
50	Oval Cap 77*74*37	2

ASSEMBLY

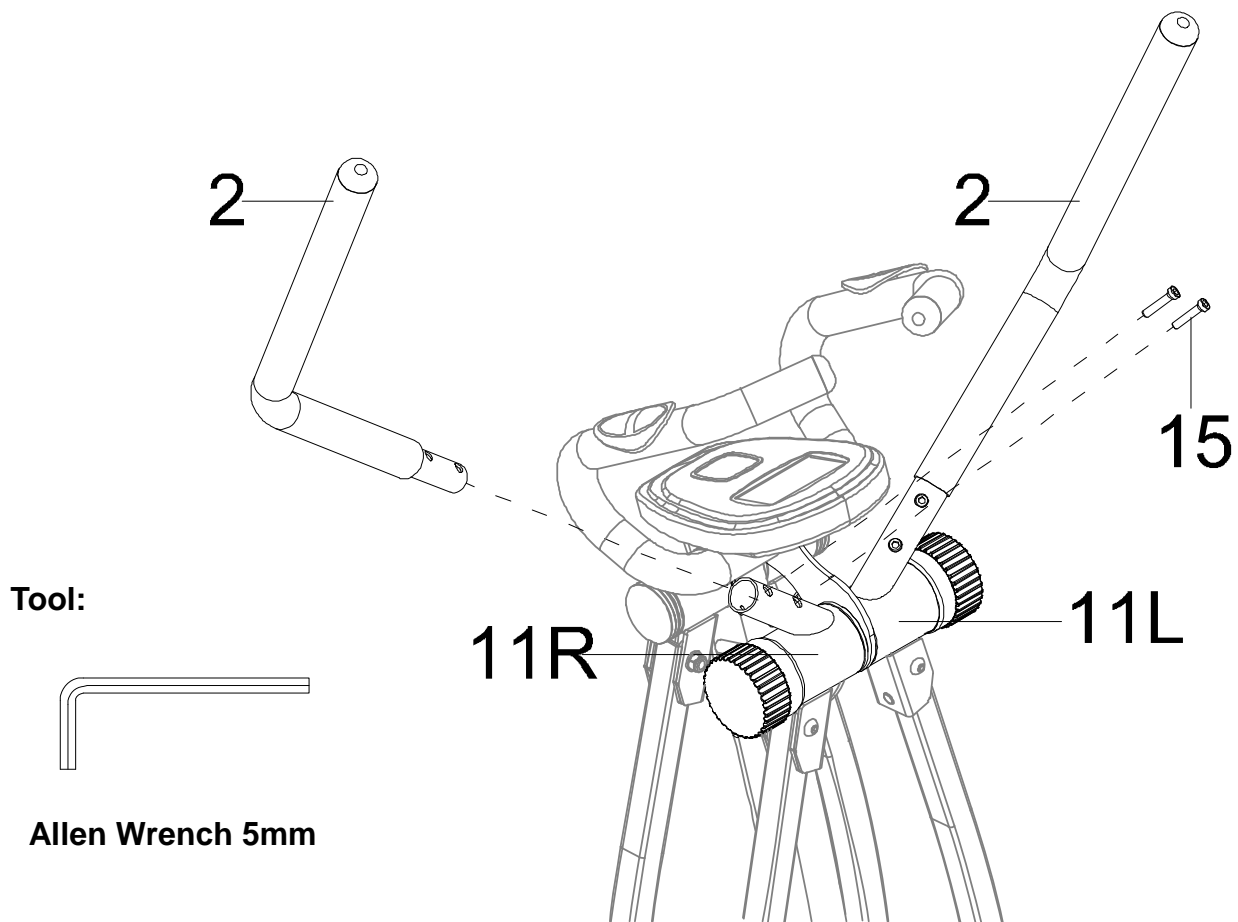


Step 1 Setting up the Cloud Walker™

1a. Setting up the Cloud Walker™: Remove the **Round Knob (49)** and **Washer (46)** from the **Rear Stabilizer (47)** by turning it in a counter-clockwise direction as shown in Fig. (A).

1b. Place the **Rear Stabilizer (47)** flat on the ground. On the lower right side of the **Main Frame (38)**, Insert the **Round Knob (49)** with **Washer (46)** and turn it in a clockwise direction to lock the **Main Frame (38)** and the **Rear Stabilizer (47)** together as shown in Fig. (B).

1c. Lower the **Left & Right Pedals (41L & 41R)** as shown in Fig. (C).



Step 2

2a. Installing the Handlebar: Remove the two **Screws (15)** from the **Handlebar Bracket (11R)**. Insert the **Handlebar (2)** into the **Handlebar Bracket (11R)** and align the screw holes. Tighten the **Screws (15)** with the **5mm Allen Wrench** provided to secure the **Handlebar (2)**.

2b. Installing the Handlebar: Remove the two **Screws (15)** from the **Handlebar Bracket (11L)**. Insert the **Handlebar (2)** into the **Handlebar Bracket (11L)** and align the screw holes. Tighten the **Screws (15)** with the **5mm Allen Wrench** provided to secure the **Handlebar (2)**.

CONSOLE

SPECIFICATIONS:

SCAN----- The Console will scan through and display each function every 6 seconds.
TIME----- Displays elapsed time 0:00~99:59
COUNT----- Displays step count; Every two steps is displayed as 1 Count. 0~9999
CALORIES----- Displays calories burned 0~9999
PULSE----- Displays user pulse 30~240 BPM



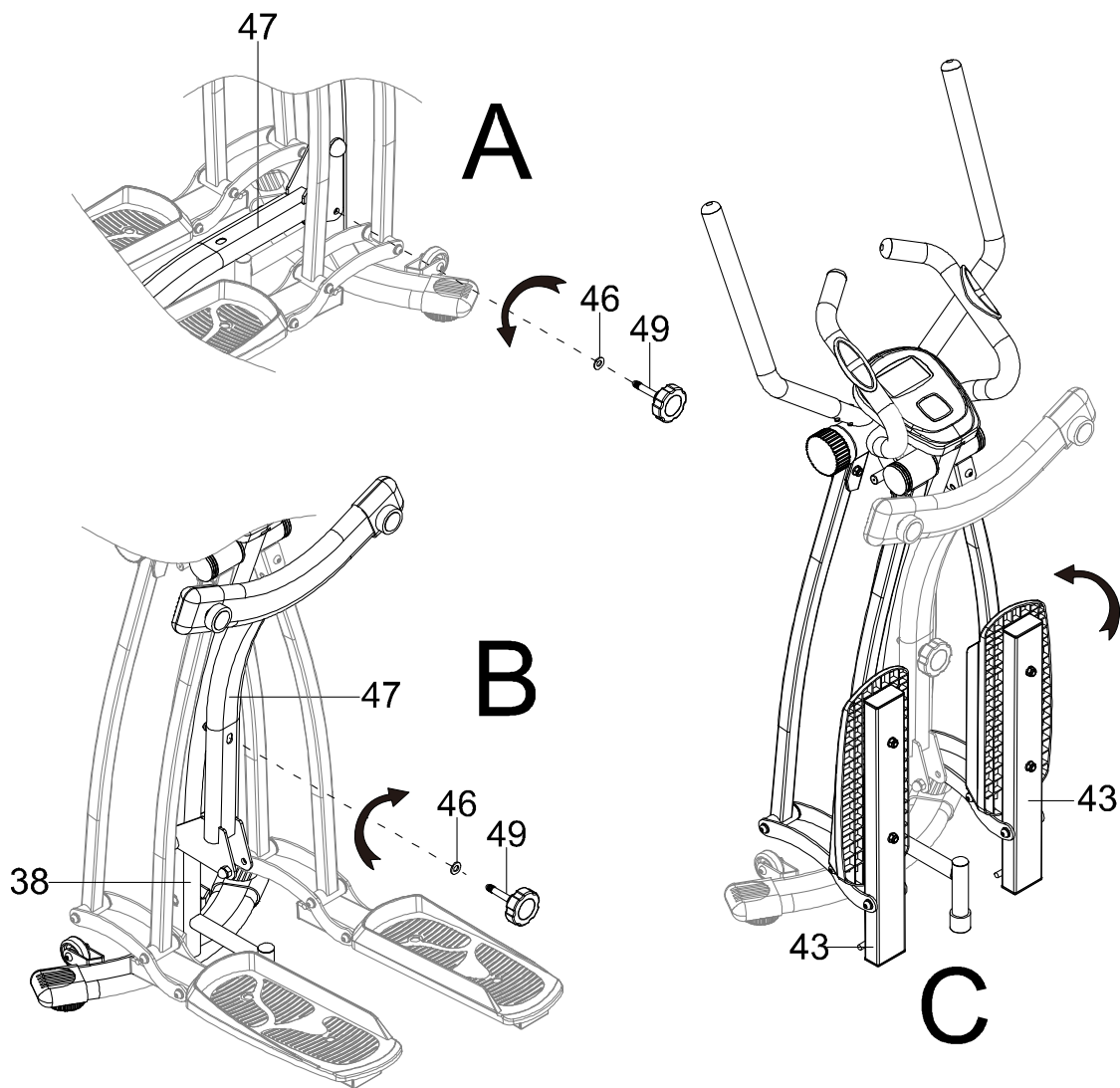
OPERATION:

SCAN	Press the MODE until SCAN appears on the screen; the Console will automatically display each function every 6 seconds.
TIME	Press the MODE until TIME appears on the screen; the Console will display your current workout time.
COUNT	Press MODE until COUNT appears on the screen; the Console will display your current step count.
CALORIES	Press MODE until CAL appears on the screen; the Console will display the total accumulated calories burned during workout.
RESET	Press and hold the MODE key for 2 seconds, all values will reset to zero.
PULSE	While grasping both Hand Pulse Sensors, The Console will display the user's Pulse.
AUTO ON/OFF	After 4 minutes of inactivity, The Console will automatically shut off. The Console will automatically turn on when activity begins.

NOTE

1. Two batteries are required for this Console. SIZE AA (1.5V)
2. Keep away from moist and damp areas.

STORAGE

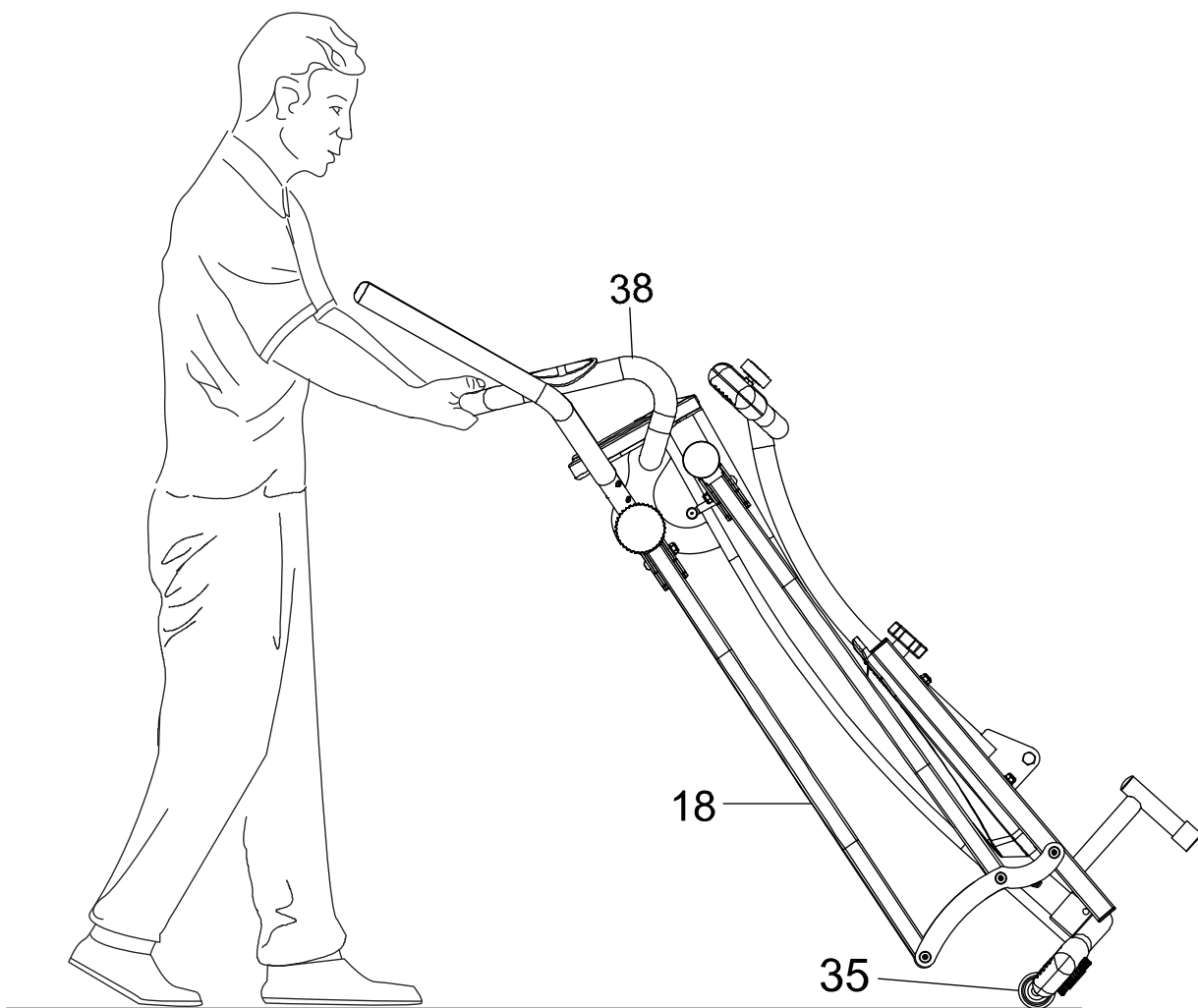


For your convenience, the Cloud Walker™ can be folded for storage.

A. Remove **Round Knob (49)** and **Washer (46)** from the side of **Main Frame (38)**. See Fig A.

B. Fold and secure the **Rear Stabilizer (47)** against the **Main Frame (38)** with the **Round Knob (49)** and **Washer (46)**. See Fig B.

C. Fold the **Left & Right Pedals (41L & 41R)** See Fig C.



To move the Cloud Walker™, Hold down the **Handlebars (38)** and tilt onto the **Round Wheels (35)**. Beware: the **Swing Posts (18)** will move while transporting.

WARRANTY

MANUFACTURER'S LIMITED WARRANTY

Paradigm Health & Wellness warrants to the original purchaser that this product is free from defects in material and workmanship when used for the purpose intended, under the conditions that it has been installed and operated in accordance with Paradigm's Owner's Manual. Paradigm's obligation under this warranty applies to the following:

COMPONENT LENGTH OF WARRANTY

Structural Frame **1 year For Home Use Only**

All Other Components **90 days For Home Use Only**

(computer display, electronics, upholstery, foam, ball bearings, pulleys, belts, cables, wires, shocks, covers, tension, internal mechanism, wheels, pedals, knobs, accessories and hardware)

Exclusions from Warranty Coverage:

Paradigm does not warrant against and is not responsible for, and no implied warranty shall be deemed to cover, any product failure, product malfunction, or damages attributable to:

1. Improper installation and/or failure to abide by Paradigm's installation guidelines;
2. Use of this product beyond normal home use, or in an application for which it was not designed;
3. Cosmetic items such as scratches, dents or discolorations;
4. Damage caused by normal wear and tear, vandalism, accidental or by animals;
5. Any act of Nature (such as fire, flooding, snow, ice, hurricane, earthquake, lightning or other natural disaster), environmental condition (such as air pollution, mold, mildew, etc.), or staining from foreign substances (such as dirt, grease, oil, etc.);
6. Normal weathering due to exposure to sunlight, weather and atmosphere which can cause colored surfaces to, among other things, flake, chalk, or accumulate dirt or stains; or
7. Improper operation, alteration, handling, storage, abuse or neglect of the products.

Paradigm, using its sole discretion, will either repair or replace free of charge any part(s) proven to be defective under normal home use. Any repair or replacement shall provide no new warranty coverage, but shall retain only the remaining portion of the original product's warranty. This warranty is offered only to the original purchaser and is not transferable. Proof of original purchase is required.

Ordering Replacement Parts

Replacement parts can be ordered by emailing our customer service department:

Service@paradigmhw.com

Open Monday thru Friday 8:00 AM - 5:00 PM (PST).

When ordering replacement parts please have the following information ready:

1. Owner's Manual
2. Model Number
3. Description of Parts
4. Part Number
5. Date of Purchase

PARTS REQUEST FORM

Paradigm Health & Wellness, Inc.

EMAIL THIS FORM WITH YOUR RECEIPT OF PURCHASE TO

Service@paradigmhw.com *

NAME: _____

ADDRESS: _____

CITY: _____ STATE: _____ ZIP: _____

TELEPHONE: (Day) _____

(Night) _____

SERIAL#: _____

MODEL#: _____

PURCHASE DATE: _____

PLACE OF PURCHASE: _____

PART #	DESCRIPTION	QTY

“YOUR ORDER WILL BE PROCESSED WITHIN 3 BUSINESS DAYS”

**** This form can also be faxed in Fax #: 626-810-2166***