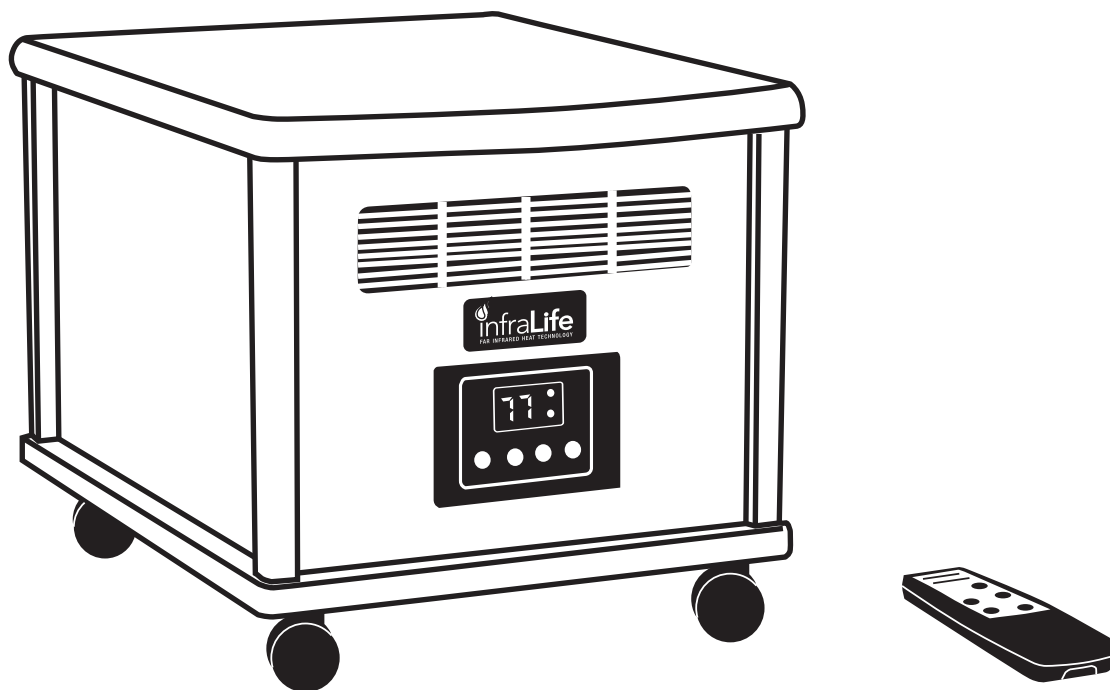


# Portable infrared Heater



Item #9720

**OWNER'S MANUAL**

# TABLE OF CONTENTS

SERVICE .....	2
IMPORTANT LABELS .....	3
SAFETY PRECAUTIONS .....	4
PART DRAWING .....	5
PART LIST .....	6
OPERATING INSTRUCTIONS .....	7
MAINTENANCE .....	9
WARRANTY .....	10
FAX FORM .....	11

## SERVICE

**IMPORTANT: FOR NORTH AMERICA ONLY**

**To request product service and order replacement parts, please call our customer service department at:  
1-866-924-1688**

Monday through Friday, 8:00 AM-5:00 PM Pacific Standard Time,

or email us at: [service@paradigmhw.com](mailto:service@paradigmhw.com)

Please visit our website at [www.paradigmhw.com](http://www.paradigmhw.com).

**Please have the following information ready when requesting for service:**

Your name

Phone number

Model number

Serial number

Part number

Proof of Purchase

**\*Before returning this product to the store please contact customer service at the contact number.**

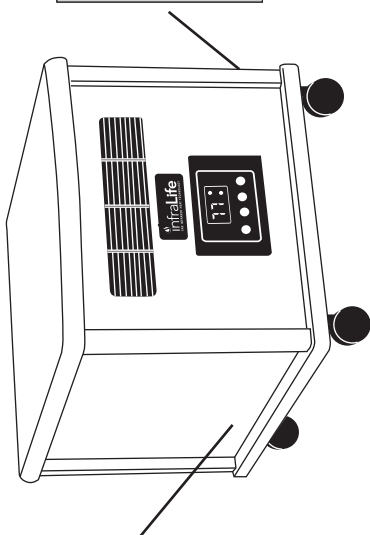
Paradigm Health & Wellness, Inc.

1189 Jellick Ave, City of Industry, CA 91748, USA

## IMPORTANT LABELS

## WARNING

**WARNING: RISK OF FIRE-KEEP COMBUSTIBLE MATERIAL AWAY FROM FRONT OF HEATER.**  
**AVERTISSEMENT: RISQUE D'INCENDIE-NE LAISSEZ PAS DE MATERIAU COMBUSTIBLE DEVANT LE RADIATEUR.**



## WARNING

**Risk of Fire**—Keep combustible material such as furniture, papers, clothes, and curtains at least 3 feet (0.9M) from the front of the heater and away from the sides and rear.

**Avvertimento**

Gardez les matériels aux risqué de combustibles tel que meubles, des papiers de vêtements, des rideaux au moins 3 pieds, (0.9M) de l'avant du réchauffeur et loin du côté et de l'arrière.

This WARNING label is stuck on the power cord.

**WARNING- TO REDUCE  
THE RISK OF FIRE:**

- Always plug heaters directly into a wall outlet/circuit for use with an extension cord or relocatable power tap (outlet/power strip).
- Check your heater cord and plug connections. A loose fitting plug can cause the plug to overheat and/or cause a fire. Be sure plug fits snugly in the outlet.
- Check frequently during use to make sure plug and outlet are not hot. If so, disconnect using heater and have outlet replaced by a qualified electrician.
- Note:** Heaters draw more current than most small appliances. Overloading of the house's circuit could even result in fire if not occurred with the proper appliances.
- Always unplug heater when not in use.
- Do not operate heater with a damaged cord or plug or after the heater malfunctions. Has been dropped or damaged in any manner. Discard heater or return to a authorized service facility for examination and for repair.
- Do not run heater over sleeping. Do not cover with throw rugs, runners, or heavy furniture. Do not use heater in a bathroom. Do not use in bedrooms. Keep cord away from high traffic areas so it will not be tripped over.

DO NOT REMOVE THIS TAG!



**AVERTISSEMENT -POUR REDUIRE  
LES RISQUES D'INVENDIE**

- Appareils de chauffage du type à tirage forcé, émetteurs d'eau à prise multiple (voir page 100) et radiateurs à prise unique (voir page 100) : non compatibles. Les autres appareils de chauffage (à tirage naturel, à prise unique) sont compatibles.

NE PAS RETIRER LE PRESENT TAG

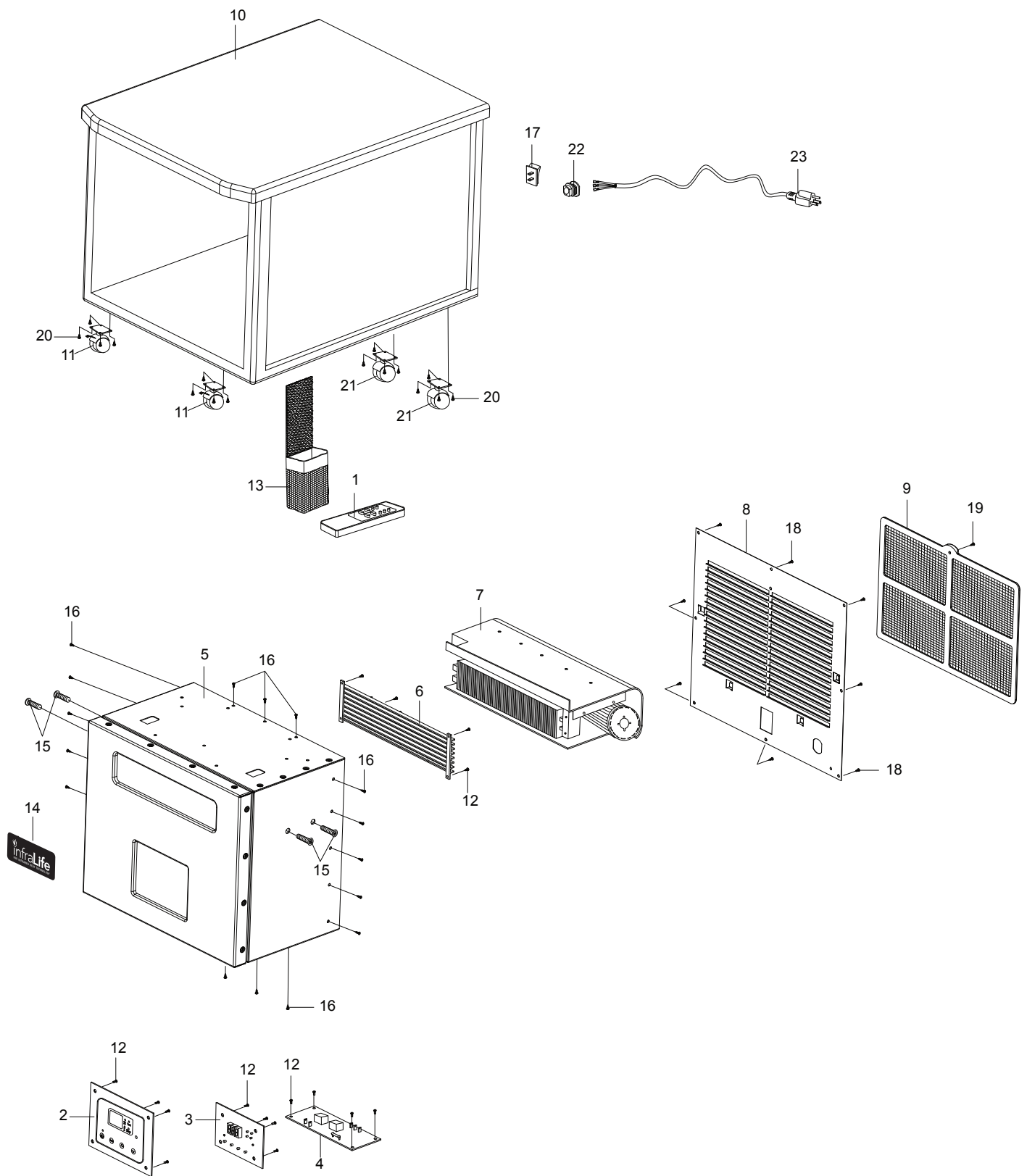
# SAFETY PRECAUTIONS

**When using this heater, basic safety precautions should always be followed to reduce the risk of fire, electric shock, and injury to persons, including the following:**

1. Read all manual before using this heater.
2. **WARNING:** Risk of Fire-Keep combustible material away from front of heater.
3. **WARNING:** Risk of Fire-Keep combustible material such as furniture, papers, clothes, and curtains at least 3 feet (0.9M) from the front of the heater and away from the sides and rear.
4. Always plug heater directly into a wall outlet/receptacle. Never use with an extension cord or relocatable power tap (outlet/power strip).
5. Check your heater cord and plug connections. A loose fitting outlet can cause the plug to overheat and/or cause a fire. Be sure plug fits snugly in the outlet. Check frequently during use to make sure plug and outlet are not hot. If so, discontinue using heater and have outlet replaced by a qualified electrician.  
Note: Heater draw more current than small appliances, overheating of the outlet may occur even if it has not occurred with the other appliances.
6. Always unplug the heater when not in use.
7. Do not operate heater with a damaged cord or plug or after the heater malfunctions, has been dropped or damaged in any manner. Discard heater or return to an authorized service facility for examination and/or repair.
8. Do not run cord under carpeting. Do not cover cord with throw rugs, runners, or similar coverings. Do not route cord under furniture or appliances. Keep cord away from high traffic areas so it will not be tripped over.
9. Do not try to open or repair the heater yourself.
10. The surfaces of the heater may get hot when in use. To avoid burns, do not touch the hot surfaces.
11. Close supervision is necessary when this unit is used by or near children, invalids or disabled persons.
12. Do not use outdoors.
13. For Household Use Only.
14. Do not touch the control panel or plug with a wet hand.
15. Keep heater away from heated surfaces.
16. Plug must be plugged into an appropriate socket or outlet that is properly installed. Improper connection can result in the risk of electric hazard.
17. To disconnect, turn all controls to the off position, then remove plug from outlet.
18. Always unplug the heater before moving or cleaning.
19. Always use the unit on a dry and level surface.

**CAUTION:** Read all instructions carefully before operating this product. Retain this Owner's Manual for future reference.

# PART DRAWING

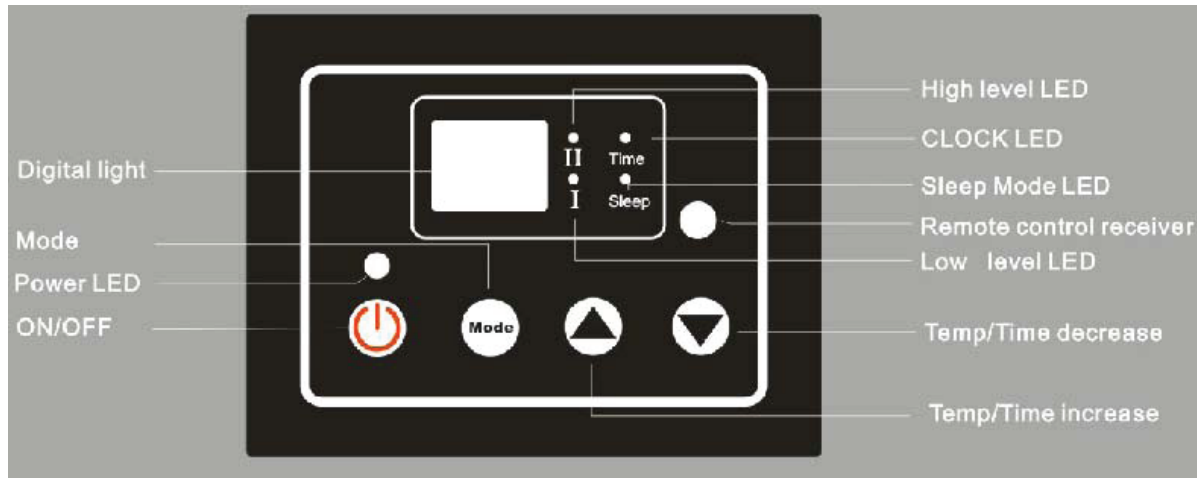


## PART LIST

No.	Description	Qty	No.	Description	Qty
001	Remote Control	1	013	Remote Control Store Case	1
002	Control Aluminum Plate	1	014	Logo Plate	1
003	Control Panel	1	015	Bolt KM4x15	4
004	Power Control Board	1	016	Bolt PWA3x8	16
005	Metal Box	1	017	Master Power Switch	1
006	Air Outlet	1	018	Bolt PWM4x12	8
007	PTC Heater	1	019	Bolt PWA4x12	1
008	Metal Rear Cover	1	020	Bolt KA3x10	16
009	Air Filter	1	021	Rear Caster Wheel	2
010	Wood Cabinet	1	022	Cable Gland	1
011	Front Caster Wheel	2	023	Power Cord	1
012	Bolt KM3x6	16			

# OPERATING INSTRUCTIONS

## A: Control button layout



**B: Temperature setting:** 39 - 80 °F (4 - 27 °C)

**C: Time Setting:** 0~ 8 hours

### D: Operation:

Plug the power cord into an appropriate socket or outlet. Then press the Master Power Switch to “ON” position on the rear of the heater and the Power LED will light up on the control panel.

#### “Power (ON/OFF)” Button:

**Power ON:** Press and hold the Power (ON/OFF) button for 2-3 second to turn on the power of the heater. The heater works on default setting of the high temperature level performance.

**Power OFF:** Press the Power (ON/OFF) button to turn off the power of the heater. All LED lights are off except the Power LED light. Then turn off the master power switch on the rear of the heater.

#### “Mode” Button:

Press the Mode button to select Low Temperature Level Mode (I), Time Mode (Time), Sleep Mode (Sleep), or High Temperature Level Mode (II).

**Low Temperature Level Mode (I):** Press the Mode button to select Low Temperature Level Mode (I) when “I” LED lights up. The LED display will show the default value of temperature as 80 °F (27 °C). You may press the “▲” or “▼” button to set the temperature. If no buttons are pressed for 3 seconds, it will switch to the current ambient temperature. Once you have set the desired temperature, the heater will remain on until the ambient temperature increases to the temperature that you set. The heater will off automatically to maintain the desired ambient temperature. (Note: If the current ambient temperature is greater than the set temperature, the function will not operate.)



# OPERATING INSTRUCTIONS

**Time Mode (Time):** Press the Mode button to select Time Mode (Time) when “Time” LED lights up. The LED display will show the time that can be set. You may press the “▲” or “▼” button to set the time. Each time you press the “▲” or “▼” button, the time will increase or decrease by 1 Hr. If no buttons are pressed for 3 seconds, it will switch to the current ambient temperature. When pre-set time counts down to 0. The heater will off automatically.

**Sleep Mode (Sleep):** Press the Mode button to select Sleep Mode (Sleep) when “Sleep” LED lights up. The LED display will show the default value of temperature as 77 °F. The temperature ca not be set by pressing the “▲” or “▼” button. If no buttons are pressed for 3 seconds, it will switch to the current ambient temperature.

**High Temperature Level Mode (II):** Press the Mode button to select High Temperature Level Mode (II) when “II” LED lights up. The LED display will show the default value of temperature as 80 °F (27 °C). You may press the “▲” or “▼” button to set the temperature. If no buttons are pressed for 3 seconds, it will switch to the current ambient temperature. Once you have set the desired temperature, the heater will remain on until the ambient temperature increases to the temperature that you set. The heater will off automatically to maintain the desired ambient temperature. (Note: If the current ambient temperature is greater than the set temperature, the function will not operate.)

**Convert Watt to BTU:** A British Thermal Unit (BTU) is the amount of heat energy needed to raise the temperature of one pound of water by one degree F. This is the standard measurement used to state the amount of energy that a fuel has as well as the amount of output of any heat generating device.

Low temperature mode

750W = 2559 BTU

High temperature mode

1500W = 5118 BTU

## Error codes on LED display:

**E1:** Temperature sensor is on short-circuit.

**E2:** Temperature sensor is on open-circuit.

**E3:** Ambient temperature exceed 130 °F.

## Remote Control Button Instructions:

**Power:** Press Power button to turn on or off the power of the heater.

**Time increase and decrease:** Used for setting time.

**TEMP increase and decrease:** Used for setting temperature.

**High:** Displays High Temperature Level Mode (II).

**Low:** Displays Low Temperature Level Mode (I).

**Sleep:** Displays Sleep Mode (Sleep).

**°F / °C:** Button for alternating between Fahrenheit and Celsius.

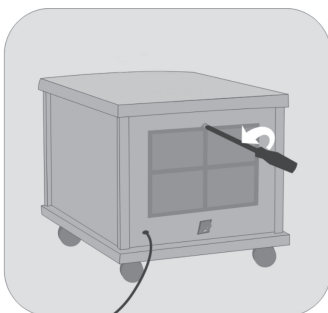


# MAINTENANCE

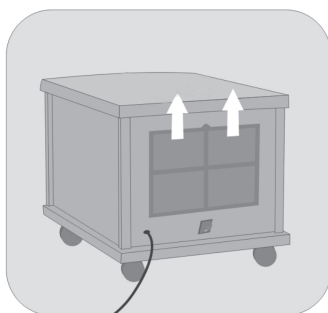
1. Press the Power (ON/OFF) button on the control panel to turn off the power of the heater.
2. Turn off the master power switch on the rear of the heater.
3. Unplug the unit and wait until it is completely cool before clean.
4. To clean the heater, the outer surfaces of the heater may be cleaned with a soft, damp cloth and any mild detergent if necessary. After cleaning, dry the heater with a soft cloth.  
CAUTION: Do not let liquid enter the heater.
5. Do not use abrasives or solvents to clean the heater. This may cause damage to the surface of the heater.
6. Do not drop the heater in water.
7. Wait until the heater is completely dry before use.

## Cleaning the Air Filter

The heater comes equipped with a washable air filter. It is easy to be cleaned. We recommend the air filter to be cleaned once a month or if it appears to be blocking airflow. To do this, please follow the below steps.



1. Loosen the bolt and remove it.



2. Gently remove the air filter from the rear of the heater.

3. Clean the filter by running clean water on the opposite direction of the air filter. You can also soak the air filter in water mixed with a small amount of mild dish soap. Then rinse with water after soaking.
4. Please allow it to drip dry completely before reinstalling.
5. Do not use heater with without air filter assembly in place.

## Storage

Store the heater in a clean and dry location when not in use.

## WARRANTY

Paradigm Health & Wellness, Inc. warrants to the original purchaser that this product is free from defects in material and workmanship when used for the purpose intended, under the conditions that it has been installed and operated in according to Paradigm Health & Wellness, Inc.'s Owner's Manual. Paradigm Health & Wellness, Inc.'s obligation under this warranty is limited to replacing free of charge, any parts which may prove to be defective under normal home use. This warranty does not include any damage caused by improper operation, misuse or commercial application. From the date of purchase, the product is warranted to be free from defects for 3 (three) years. Proof of purchase is required. This warranty is offered only to the original owner and is not transferable.

### **Ordering Replacement Parts**

Replacement parts can be ordered by calling or emailing our customer service department

**[service@paradigmhw.com](mailto:service@paradigmhw.com)**

**1-866-924-1688**

Monday through Friday, 8:00 AM - 5:00 PM (PST).

When ordering replacement parts please have the following information ready:

- 1. Owner's Manual**
- 2. Model Number**
- 3. Description of Parts**
- 4. Part Number**
- 5. Date of Purchase**

# FAX FORM

## Paradigm Health & Wellness, Inc.

### PARTS REQUEST FAX FORM

Please fax this form to (1-626-810-2166)

OR YOU CAN EMAIL CUSTOMER SERVICE REQUESTS TO  
**service@paradigmhw.com**

NAME: \_\_\_\_\_

ADDRESS: \_\_\_\_\_

CITY \_\_\_\_\_ STATE \_\_\_\_\_ ZIP \_\_\_\_\_

TELEPHONE: (Day) \_\_\_\_\_

(Night) \_\_\_\_\_

(Email Address) \_\_\_\_\_

SERIAL#: \_\_\_\_\_

MODEL#: \_\_\_\_\_

PURCHASE DATE: \_\_\_\_\_

PURCHASE FROM: \_\_\_\_\_

PART #	DESCRIPTION	QTY

***“YOUR ORDER WILL BE PROCESSED WITHIN 3 BUSINESS DAYS”***

#### OFFICIAL USE ONLY

SHIP DATE: \_\_\_\_\_

TRK #: \_\_\_\_\_

BACK ORDER: \_\_\_\_\_