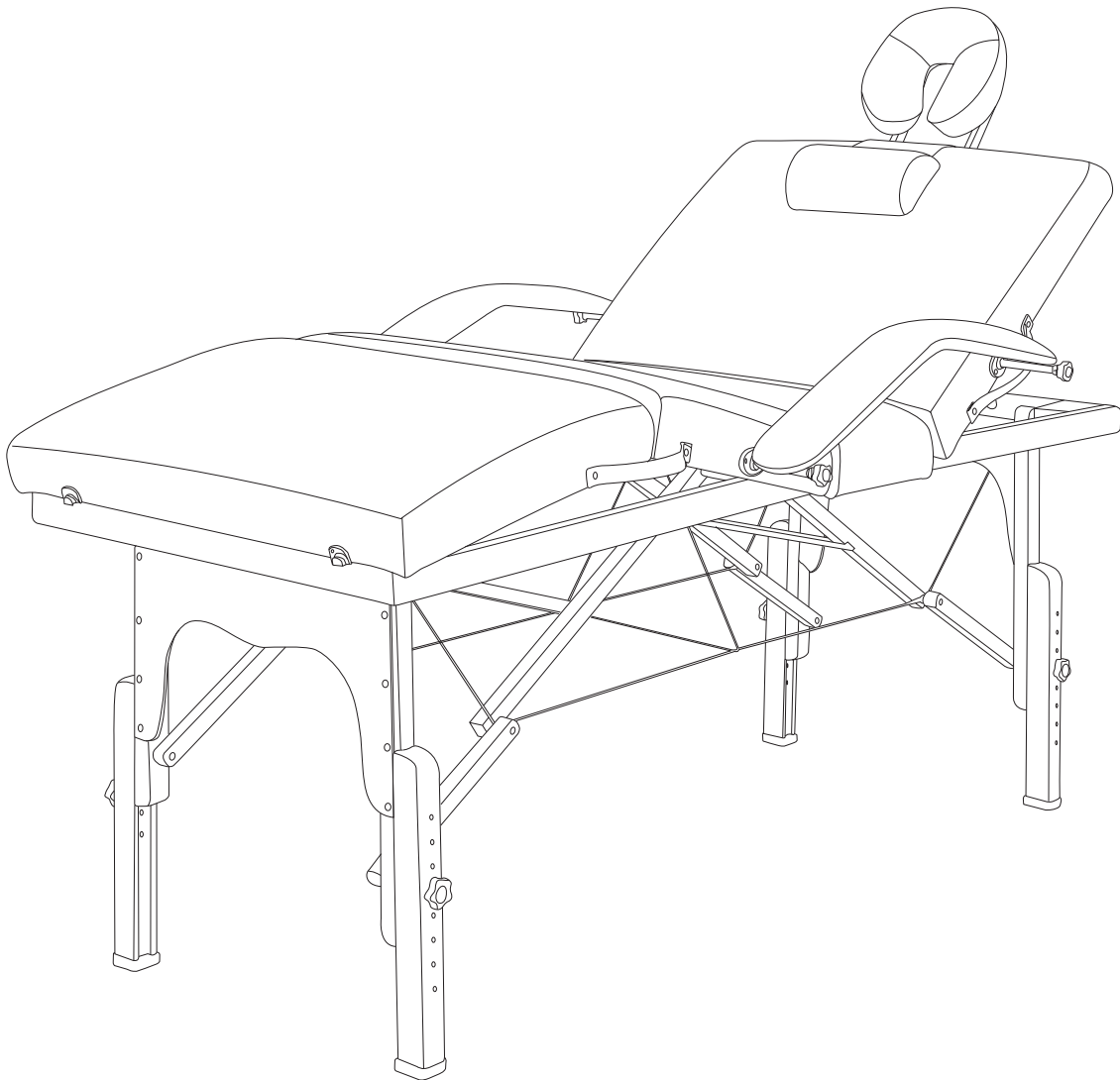


OWNER'S MANUAL



SPA TABLE



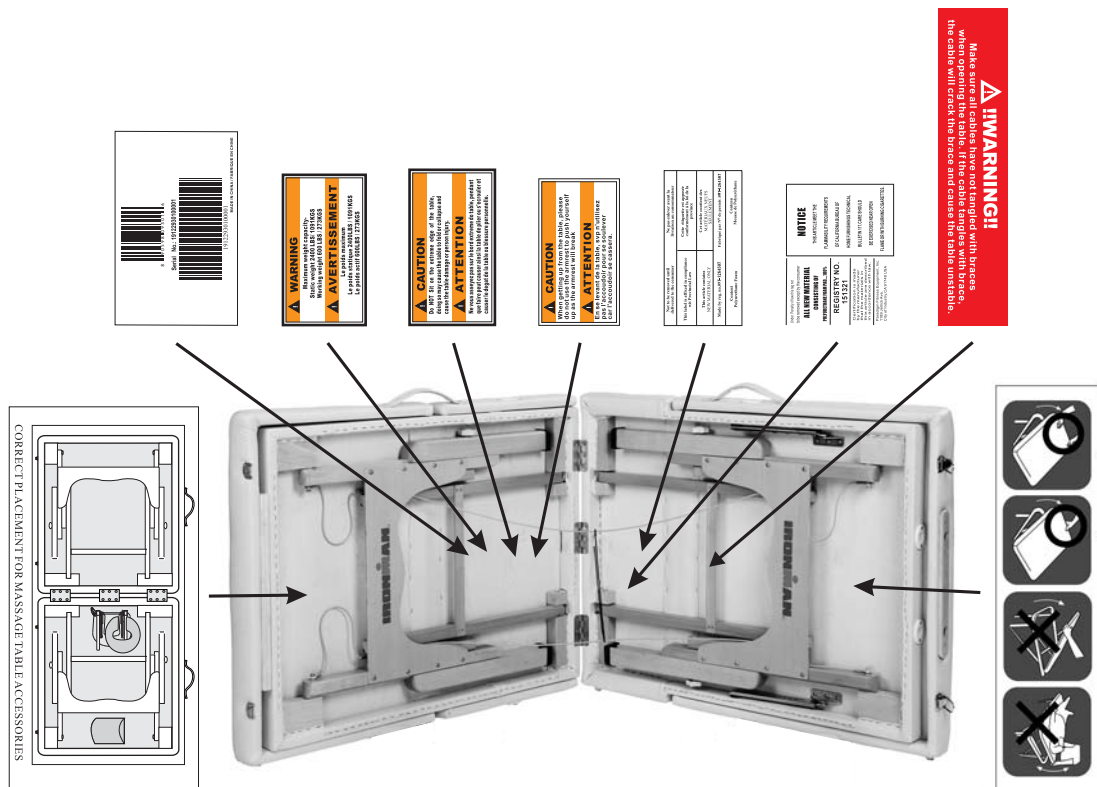
Model # 9301

The specifications of this product may vary from this photo and are subject to change without notice.
IRONMAN, IRONMAN TRIATHLON AND M-DOT are registered trademarks of World Triathlon Corporation.
This product is licensed by the IRONMAN TRIATHLON.

TABLE OF CONTENTS

	<i>Page #</i>
Warning label placement	3
<hr/>	
Service	4
<hr/>	
Safety precautions	5
<hr/>	
Overview drawing	6
<hr/>	
Part list	7
<hr/>	
Assembly	8
<hr/>	
Adjustment	11
<hr/>	
Storage	13
<hr/>	
Transport the table	13
<hr/>	
Maintenance instructions	14
<hr/>	
Warranty	15
<hr/>	
Parts request fax form	16

WARNING LABEL PLACEMENT



SERVICE

To request for product service and order replacement parts, please call our customer service department at

1-866-924-1688

Monday through Friday, 8:00 am-5:00 pm Pacific Standard Time,
or email at: **service@paradigmhw.com**

Please visit us at: **www.paradigmhw.com**

Please have the following information ready when requesting for service:

Your name	Phone number	Owner's manual
Model number	Serial number	Part number
Date of Purchase		

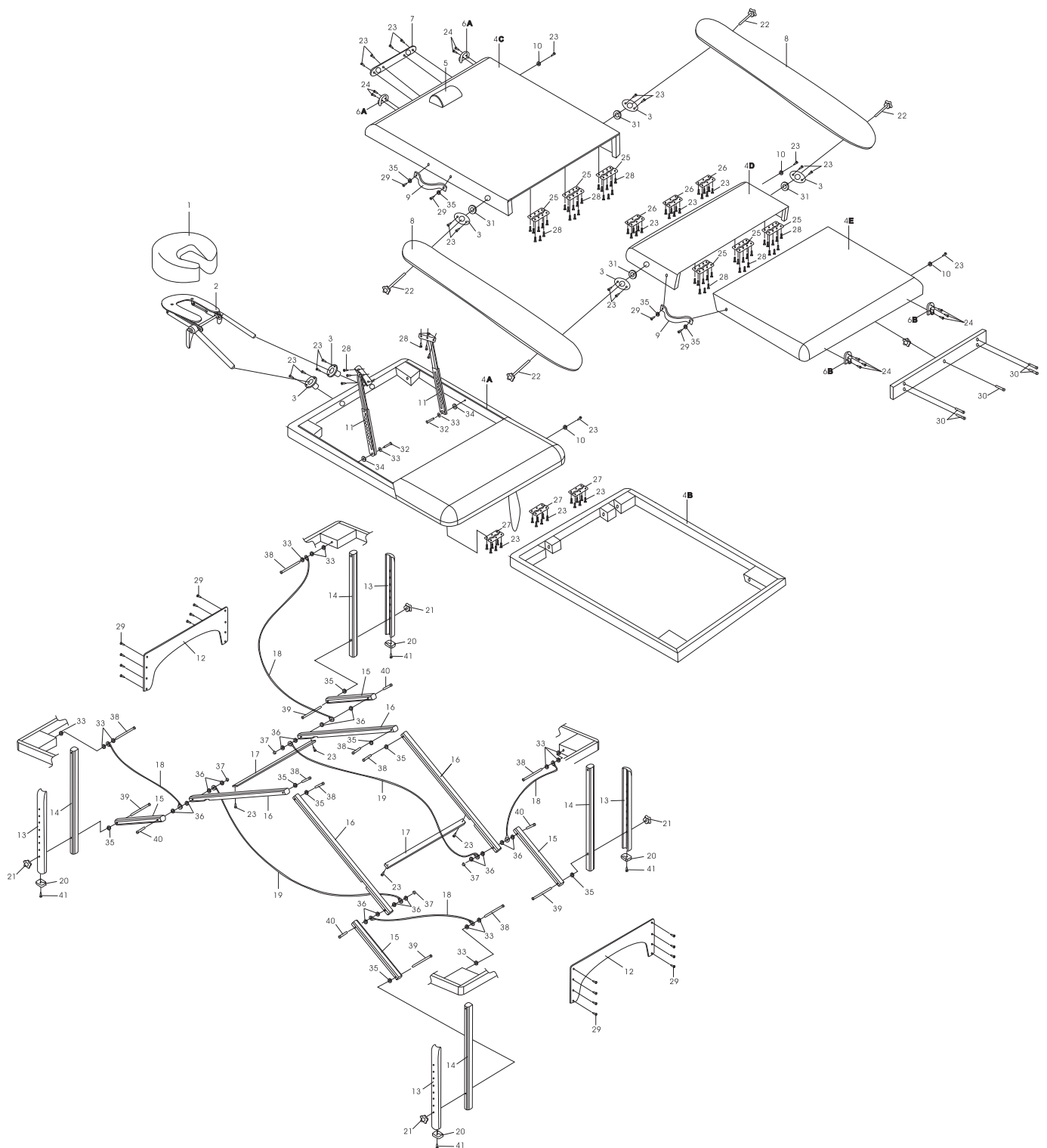
***If the product has major defects which prevent it from functioning properly, please return it to the store of purchase within the period allowed by the store.**

Paradigm Health & Wellness, Inc.
1189 Jellick Ave.
City of Industry, CA 91748

SAFETY PRECAUTIONS

- (1) Maintain the table periodically. Make sure all screws are secure and the cable has not deteriorated or frayed. Make sure there are no cracks in the wood structure.
- (2) Do not overload the table beyond the recommended weight limit. This could result in serious injury to the user.
- (3) Do not use alcohol based cleaners when cleaning the vinyl. This could cause damage to the vinyl material. Use warm soapy water and wipe dry.
- (4) Make sure when using the table that all four legs are at the same level. Using the legs at different levels can cause the table to be unstable and cause injury.
- (5) Maximum weight capacity- static weight: 2400 lbs/1091 kgs
working weight: 600 lbs/273 kgs

OVERVIEW DRAWING



PART LIST

Part#	Description	Quan.	Part#	Description	Quan.
001	Face Cushion	1	020	Lower Leg End Cap	4
002	U Shape Headrest	1	021	Leg Adjustable Knob	4
003	Bushing Ø19	6	022	Armrest Adjustable Knob	4
004A	Front Table Cushion with Frame	1	023	M4x20mm Self Tapping Screw	60
004B	Rear Table Frame	1	024	M3x20mm Round Head Self Tapping Screw	10
004C	Lift Table Cushion	1	025	Hinge (A)	6
004D	Rear Table Cushion I	1	026	Hinge (B)	3
004E	Rear Table Cushion II	1	027	Hinge (C)	3
005	Half Round Bolster	1	028	M4x16mm Round Head Self Tapping Screw	54
006A	Upper Latch	2	029	M4x18mm Mod. Truss Head Screw	20
006B	Lower Latch	2	030	M4x20mm Self Tapping Bolt	5
007	Headrest Bushing Plate	1	031	Washer Ø28xØ10	4
008	Armrest	2	032	M6x30mm Mod. Truss Head Bolt	2
009	Handle	2	033	Plastic Washer Ø15xØ6	14
010	Rubber Foot	4	034	Plastic Washer Ø25xØ10	2
011	Ratchet	2	035	Plastic Washer Ø18xØ6	12
012	End Panel	2	036	Plastic Washer Ø13xØ6	16
013	Lower Leg	4	037	M6 Nut	4
014	Upper Leg	4	038	M6x80mm Bolt	8
015	Short Brace	4	039	M6x110mm Bolt	4
016	Long Brace	4	040	M6x70mm Bolt	4
017	Cross Brace	2	041	M4x20mm Round Head Self Tapping Screw	4
018	Short Cable	4		14mm Wrench	1
019	Long Cable	2			

ASSEMBLY

1

Set the Massage Table with the Rubber Feet on the floor. Undo the Latches.

Open the table halfway. Take out the Face Cushion, U Shape Headrest, and Half Round Bolster from underneath of the table.



2

Swing the Upper Legs out into position and straighten each joint.



3

Lift the table up until all four Lower Legs are on the floor.



4

Make sure that the Massage Table is fully extended and the cables are tight.



ASSEMBLY

5

Insert both U Shape Headrest Sticks into the holes of the Headrest Bushing Plate.



6

Attach the Face Cushion onto the U Shape Headrest with the velcro.

WARNING: U SHAPE HEADREST IS FOR LIGHT RESTING ONLY! PLEASE DO NOT ADD HEAVY PRESSURE WHEN RESTING. PLEASE DO NOT PUSH DOWN ON THE HEADREST WHEN GETTING UP FROM THE BED.



7

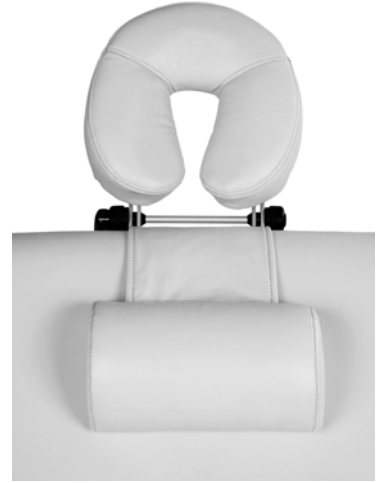
- a) Remove one of the nuts from the Armrest Adjustable Knob.
- b) Insert the Armrest Adjustable Knob through into one of the holes on underside of the Armrest, attach with the nut removed in step 7a and tighten.
- c) Connect the Armrest Adjustable Knob with Armrest onto the Bushing of the Lift Table Cushion. Thread it into the Bushing assembly in the clockwise direction and tighten the nut by the 14mm Wrench provided.
- d) Use the same procedure to attach the other Armrest Adjustable Knob with Armrest onto the Bushing of the Rear Table Cushion I.



ASSEMBLY

8

Place the Half Round Bolster on the Lift Table Cushion and attach the other end of the Half Round Bolster with the velcro that is underneath of the Lift Table Cushion.



9

Assembly complete.



ADJUSTMENT

Adjusting the angle of the U Shape Headrest

Pressing up the Locking Handles and then adjust the Headrest to the desired angle. Pressing down the Locking Handles after adjustment.



Adjusting the Table Height

Lay the table on the Rubber Foot side and then remove the Leg Adjustable Knob and Lower Leg. Place the Lower Leg back onto the Upper Leg to the desire hole for adjusting the height of the table. Tighten the Leg Adjustable Knob after adjustment.



NOTE: ADJUST ALL OF THE FOUR LEGS TO THE SAME HEIGHT.

ADJUSTMENT

Adjusting the Lift Table Cushion Height

Height of Lift Table Cushion is easily to adjust. Lift up the Lift Table Cushion to the suitable position.

NOTE: PRESS ON THE LIFT TABLE CUSHION TO MAKE SURE THE RATCHETS ARE LOCKED SECURELY BEFORE USE.

To Fold Down the Lift Table Cushion:

Lift up the Lift Table Cushion to the maximum angle then lower it back to flat position.

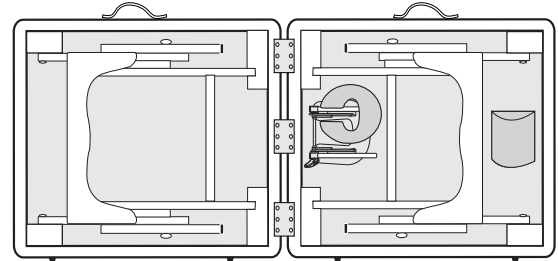


Adjusting the Rear Table Cushion Height

Pull up the Rear Table Cushion II to adjust the height of the Rear Table Cushion II to the suitable position.



STORAGE



CORRECT PLACEMENT FOR MASSAGE TABLE ACCESSORIES

1. Set the Massage Table with the rubber feet on the floor. Close the table half way as shown in figure. Place the Legs and Braces in the storage position.
2. Make sure the Cables, U Shape Headrest, Face Cushion, and Half Round Bolster are inside the table before closing it. Finally, secure with the Latches.

TRANSPORT THE TABLE



The table is easy to carry with the shoulder strap of carry bag.

MAINTENANCE INSTRUCTIONS

You should check your massage table for any kind of wear and tear before each use.

1. Check the legs, beds, cables for wear and tear.
2. Replace damaged and worn components immediately.
3. Keep all damaged equipment out of use until it is repaired.

WARRANTY

Paradigm Inc. warrants to the original purchaser that this product is free from defects in material and workmanship when used for the purpose intended, under the conditions that it has been installed and operated in according to Paradigm's Owner's Manual. Paradigm's obligation under this warranty is limited to replacing free of charge, any parts which may prove to be defective under normal home use. This warranty does not include any damage caused by improper operation, misuse or commercial application. From the date of purchase, the frame is warranted to be free from defects for 1 (one) year. All parts and workmanship, including electronics and its console cases, upholstery, foam, ball bearings, pulleys, cables, shocks, all tension mechanisms, wheels, pedals and hardware are to be free from defects for 90 days. This warranty is offered only to the original owner and is not transferable. Proof of purchase is required.

PARTS REQUEST FAX FORM

IRONMAN PARTS REQUEST FAX FORM

Please fax this form to (1-626-810-2166)

OR YOU CAN EMAIL CUSTOMER SERVICE REQUESTS TO
service@paradigmhw.com

NAME: _____

ADDRESS: _____

CITY _____ STATE _____ ZIP _____

TELEPHONE: (Day) _____

(Night) _____

(Email Address) _____

SERIAL#: _____

MODEL#: _____

PURCHASE DATE: _____

PURCHASE FROM: _____

PART #	DESCRIPTION	QTY

"YOUR ORDER WILL BE PROCESSED WITHIN 3 BUSINESS DAYS"

OFFICIAL USE ONLY

SHIP DATE: _____

TRK #: _____

BACK ORDER: _____