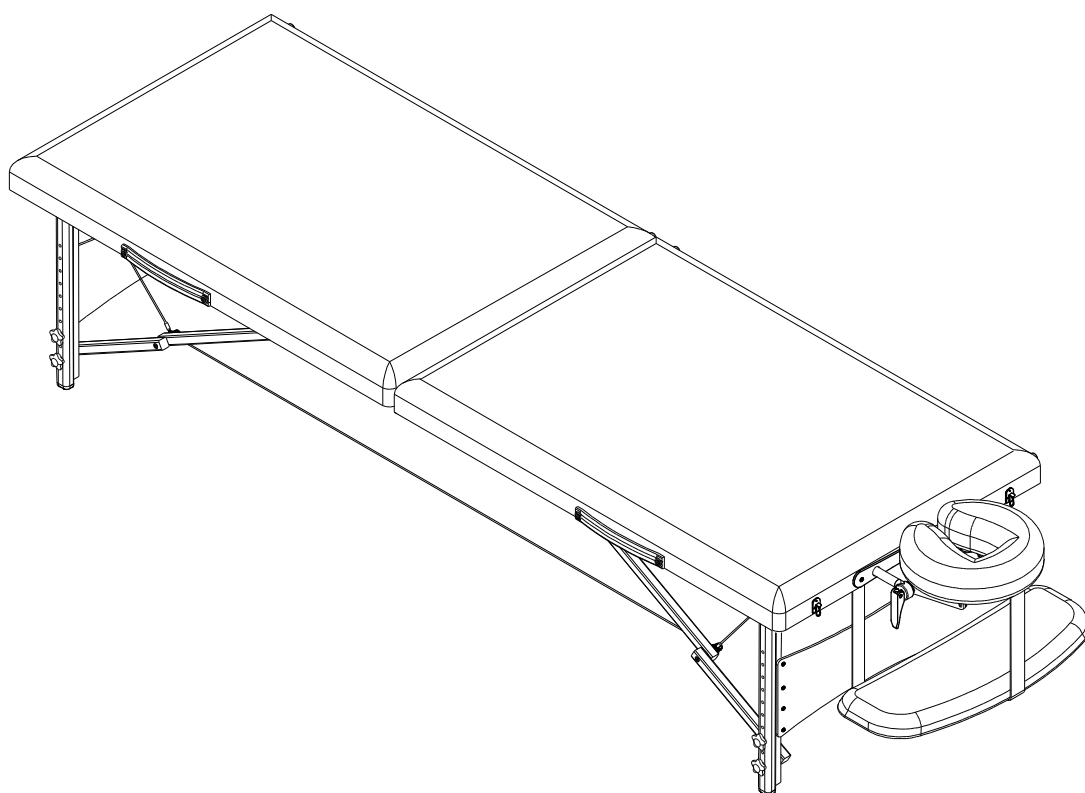


OWNER'S MANUAL



IRONMAN COLORADO MASSAGE TABLE



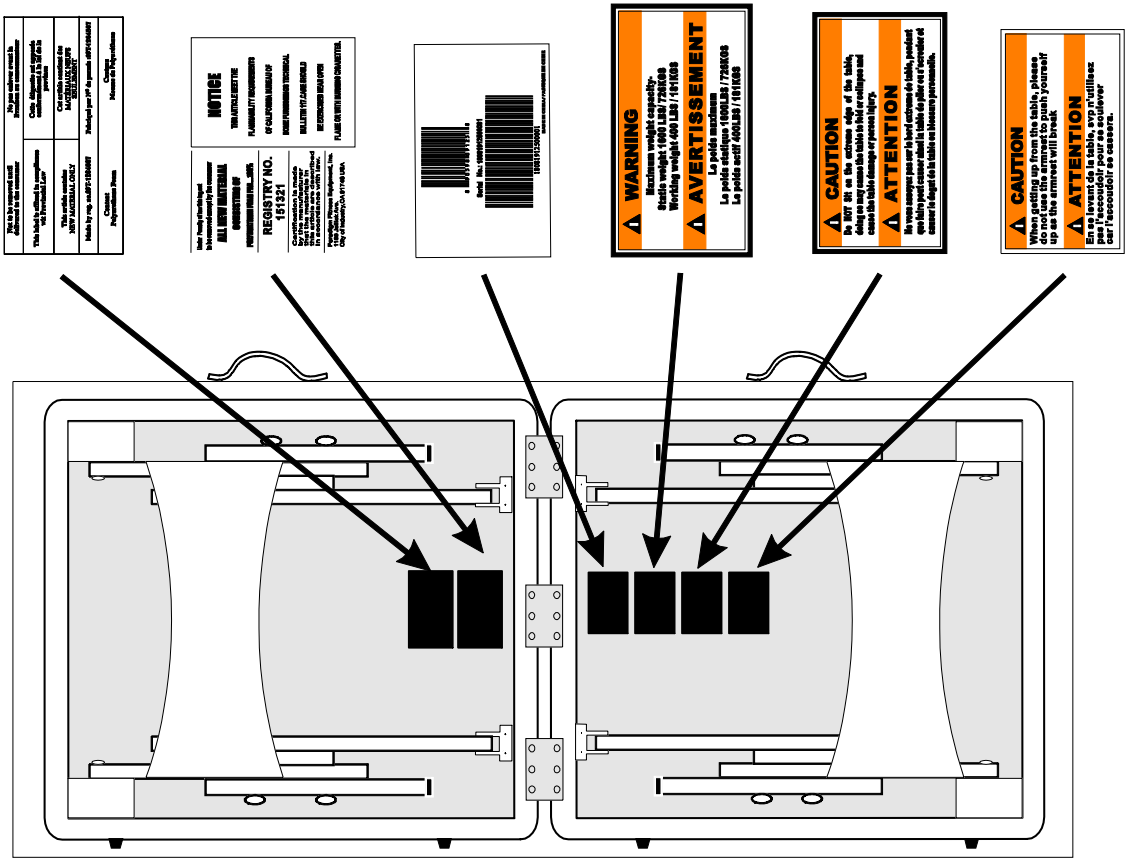
Model # 9125

The specifications of this product may vary from this photo and are subject to change without notice.
IRONMAN, IRONMAN TRIATHLON AND M-DOT are registered trademarks of World Triathlon Corporation.
This product is licensed by the IRONMAN TRIATHLON.

TABLE OF CONTENTS

	<i>Page #</i>
Warning label placement	3
Service	4
Safety precautions	5
Overview drawing	6
Part list	7
Assembly	8
Adjustment	11
Storage	12
Transport the table	12
Maintenance instructions	13
Warranty	14
Part request fax foam	15

WARNING LABEL PLACEMENT



SERVICE

To request for product service and order replacement parts, please call our customer service department at

1-866-924-1688

Monday through Friday, 8:00 am-5:00 pm Pacific Standard Time,
or email at: **service@paradigmhw.com**

Please have the following information ready when requesting for service:

Your name	Phone number	Owner's manual
Model number	Serial number	Part number
Date of Purchase		

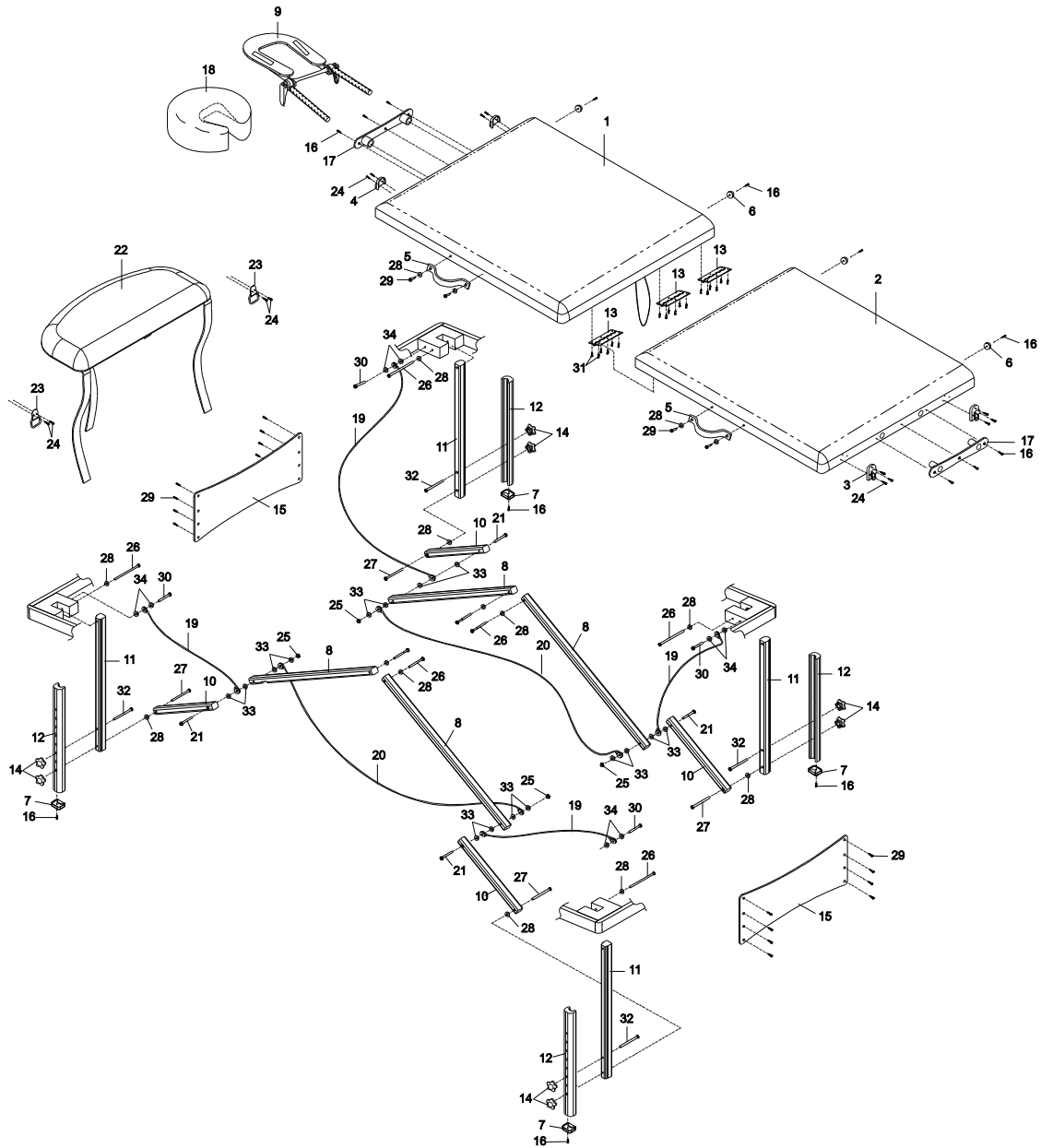
***If the product has major defects which prevent it from functioning properly, please return it to the store of purchase within the period allowed by the store.**

Paradigm Health & Wellness, Inc.
1189 Jellick Ave.
City of Industry, CA 91748

SAFETY PRECAUTIONS

- (1) Maintain the table periodically. Make sure all screws are secure and the cable has not deteriorated or frayed. Make sure there are no cracks in the wood structure.
- (2) Do not overload the table beyond the recommended weight limit. This could result in serious injury to the user.
- (3) Do not use alcohol based cleaners when cleaning the vinyl. This could cause damage to the vinyl material. Use warm soapy water and wipe dry.
- (4) Make sure when using the table that all four legs are at the same level. Using the legs at different levels can cause the table to be unstable and cause injury.
- (5) Maximum weight capacity- static weight: 1600lbs/726kgs
working weight: 400lbs/181kgs

OVERVIEW DRAWING



PART LIST

Part#	Description	Quan.	Part#	Description	Quan.
001	Front Bed with Frame	1	018	Face Cushion	1
002	Rear Bed with Frame	1	019	Short Cable	4
003	Upper Buckle	2	020	Long Cable	2
004	Lower Buckle	2	021	M6x65mm Self Tapping Bolt	4
005	Handle	2	022	Armrest	1
006	Rubber Foot	4	023	Armrest Loop	2
007	Lower Leg End Cap	4	024	M3x20mm Round Head Self Tapping Screw	14
008	Long Brace	4	025	M6 Nylon Nut	4
009	U Shape Headrest	1	026	M6x75mm Bolt	8
010	Short Brace	4	027	M6x75mm Self Tapping Bolt	4
011	Upper Leg	4	028	Plastic Washer Ø18xØ6x2t	16
012	Lower Leg	4	029	M4x18mm Mod. Truss Head Screw	20
013	Hinge	3	030	M6x30mm Bolt	4
014	Leg Knob	8	031	M4x20mm Self Tapping Screw	18
015	End Panel	2	032	M6x50mm Self Tapping Bolt	4
016	M4x20mm Round Head Self Tapping Screw	14	033	Plastic Washer Ø13xØ6x2t	16
017	Headrest Bushing Plate	2	034	Plastic Washer Ø15xØ6x4t	8

ASSEMBLY

1

Unlace the Buckles and then open the table so that it is standing on the Rubber Foot side. Take out the Face Cushion, U Shape Headrest, and Armrest from underneath of the table.



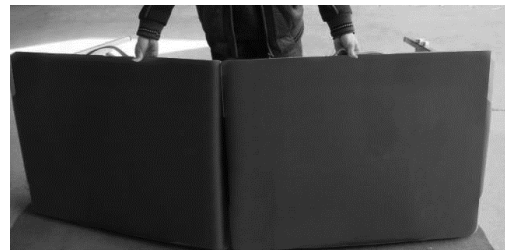
2

Pull out the left and right pair of Legs and straighten each joint.



3

Lift the table up until all four legs are on the floor.



ASSEMBLY

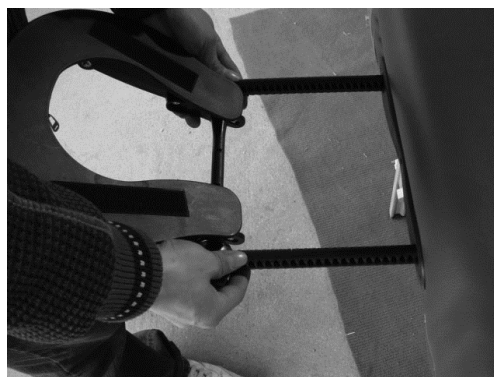
4

Lift one end of the table and pull out to open table fully.



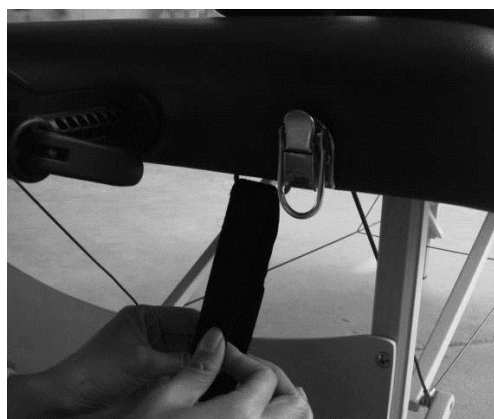
5

Insert both Right/Left Headrest Sticks with Headrest into the holes of the Headrest Bushing Plate.



6

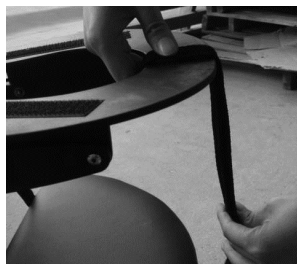
Attach armrest corner straps onto Armrest Loops underneath the Front Bed.



ASSEMBLY

7

Attach front strap onto the U Shape Headrest.



8

Place the Face Cushion onto the U Shape Headrest with the designated velcro stickers.

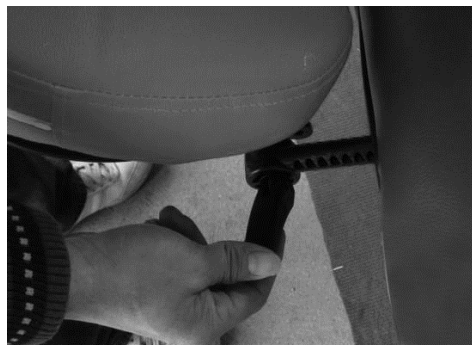
WARNING: HEADREST IS FOR LIGHT RESTING ONLY! PLEASE DO NOT ADD HEAVY PRESSURE WHEN RESTING.



ADJUSTMENT

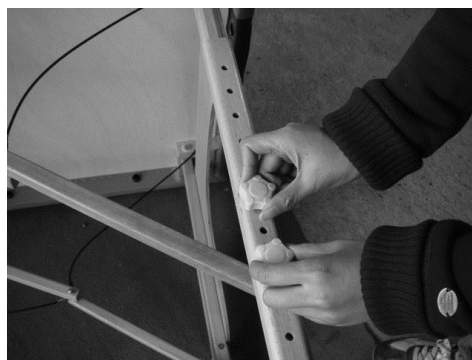
Adjusting the angle of the Headrest

Pressing up the Locking Handles and then adjust the Headrest to the desired angle. Pressing down the Locking Handles after adjustment.



Adjusting the Table Height

Lay the table on the Rubber Foot side and then remove both Leg Knobs.

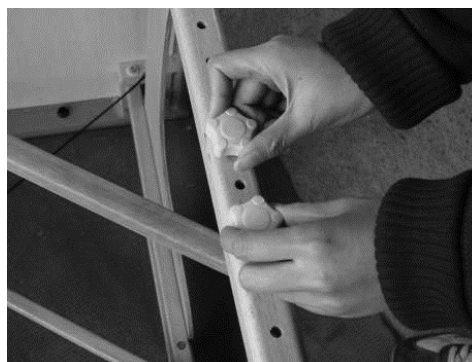


Remove the Lower Leg and then place the Lower Leg back onto the Upper Leg to the desired holes for adjusting the height of the table.



Tighten both Leg Knobs after adjustment.

NOTE: Adjust all of the four Legs to the same height.



STORAGE



1. Lay the table on its side and fold at an angle.
2. Completely fold the Legs flat under the table.
3. Make sure the Cables, U Shape Headrest, Face Cushion, and Armrest are inside the table before closing it.

TARNSPORT THE TABLE



The table is easy to carry with the shoulder strap of carry bag.

MAINTENANCE INSTRUCTIONS

You should check your massage table for any kind of wear and tear before each use.

1. Check the legs, beds, cables for wear and tear.
2. Replace damaged and worn components immediately.
3. Keep all damaged equipment out of use until it is repaired.

WARRANTY

Paradigm Inc. warrants to the original purchaser that this product is free from defects in material and workmanship when used for the purpose intended, under the conditions that it has been installed and operated in according to Paradigm's Owner's Manual. Paradigm's obligation under this warranty is limited to replacing free of charge, any parts which may prove to be defective under normal home use. This warranty does not include any damage caused by improper operation, misuse or commercial application. From the date of purchase, the frame is warranted to be free from defects for 1 (one) year. All parts and workmanship, including electronics and its console cases, upholstery, foam, ball bearings, pulleys, cables, shocks, all tension mechanisms, wheels, pedals and hardware are to be free from defects for 90 days. This warranty is offered only to the original owner and is not transferable. Proof of purchase is required.

PART REQUEST FAX FORM

IRONMAN PARTS REQUEST FAX FORM

Please fax this form to (1-626-810-2166)

OR YOU CAN EMAIL CUSTOMER SERVICE REQUESTS TO
service@paradigmhw.com

NAME: _____

ADDRESS: _____

CITY _____ STATE _____ ZIP _____

TELEPHONE: (Day) _____

(Night) _____

(Email Address) _____

SERIAL#: _____

MODEL#: _____

PURCHASE DATE: _____

PURCHASE FROM: _____

PART #	DESCRIPTION	QTY

"YOUR ORDER WILL BE PROCESSED WITHIN 3 BUSINESS DAYS"

OFFICIAL USE ONLY

SHIP DATE: _____

TRK #: _____

BACK ORDER: _____