

# OWNER'S MANUAL



**Paradigm™**  
Health & Wellness

**Tahoe**  
by **EXERPEUTIC®**

## MASSAGE TABLE



**9119.2-051517**

The specifications of this product may vary from photo and are subject to change without notice.



**PLEASE DO NOT RETURN THIS PRODUCT TO THE  
STORE.**

**STOP. Contact customer service if you have any  
questions regarding assembly or proper operation  
of the machine.**

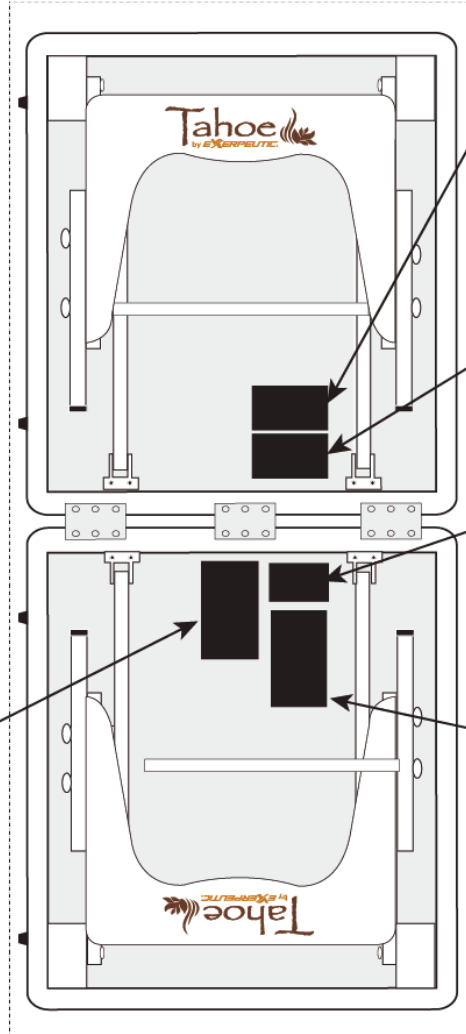
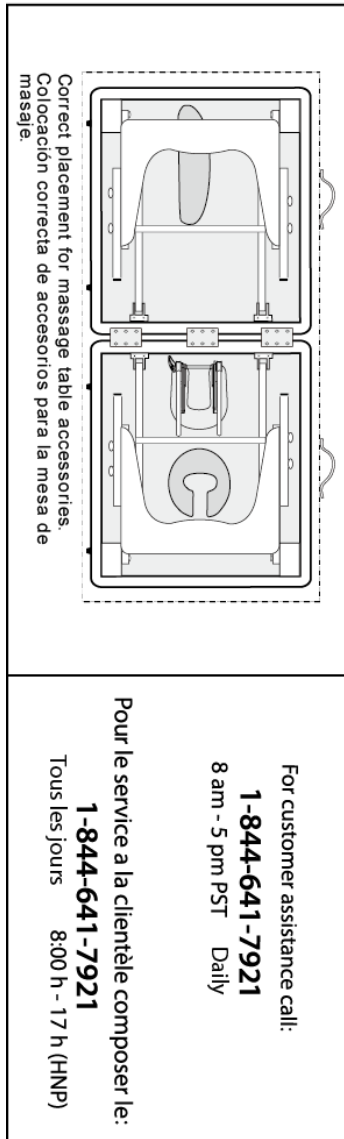
**Email us at:**  
**[Service@paradigmhw.com](mailto:Service@paradigmhw.com)**

**Or call us at:**  
**1-844-641-7921**  
**Hours:**  
**8:00 am to 5:00 pm (PST) Daily**

# TABLE OF CONTENTS

	<i>Page #</i>
Label placement	3
<hr/>	
Service	4
<hr/>	
Safety precautions	5
<hr/>	
Overview drawing	6
<hr/>	
Parts list	7
<hr/>	
Assembly	8
<hr/>	
Adjustments	11
<hr/>	
Storage	12
<hr/>	
Maintenance instructions	12
<hr/>	
Warranty	13
<hr/>	
Part request form	14

# LABEL PLACEMENT



Not to be removed until delivered to the consumer	Ne pas enlever avant la livraison au consommateur
This label is affixed in compliance with Provincial Law	Cette étiquette est apposée conformément à la loi de la province
This article contains NEW MATERIAL ONLY	Cet article contient des MATÉRIAUX NEUFS SEULEMENT
Made by reg. no.09T-1264507	Fabriqué par N° de permis :09T-1264507
Content Polyurethane Foam	Contenu Mousse de Polyuréthane

<b>NOTICE</b> This article does not meet the flammability requirements of California Bureau of Home Furnishings Technical Bulletin 117. Care should be exercised when operating flame or with burning cigarettes.	<b>AVIS</b> Ce produit ne satisfait pas aux critères d'flammabilité spécifiés à l'article 117 du décret technique du California Bureau of Home Furnishings. Ne pas utiliser près d'une source de chaleur ou d'une flamme nue (cigarettes, etc.).
<b>NOTES FOR THE CONSUMER</b> ALL NEW MATERIALS CONSISTING OF POLYURETHANE FOAM AND 100% POLYURETHANE 100%	<b>NO D'ENREGISTREMENT</b> VA25302 (CN) Cette étiquette est apposée conformément à la loi de la province de l'Ontario, Canada. 1180-Jalisco, 91741 USA
<b>REGISTRY NO. VA25302 (CN)</b> Certification is made by the manufacturer in this article and is in accordance with law. Precision Health and Wellness, Inc. 1180-Jalisco Ave. City of Industry, CA 91741 USA	<b>SOUS PEINE DE SANCTION LÉGALE, CE DÉTAILLANT NE PEUT PAS VENDRE NI RANGER QUE LE CONSOMMATEUR ENTièrement FABRIQUÉ DE MOISSÉ DE POLYURÉTHANE 100%.</b>



**ATTENTION**

- Le poids maximum statique est de 227 kg.
- Ne vous asseyez pas sur le bord extrême de la table, pendant que faire peut causer ainsi la table de plier ou s'écrouler et causer le dégât de la table ou blessure personnelle.
- En se levant de la table, n'utilisez pas l'accoudoir pour se soulever car l'accoudoir se cassera.

**CAUTION**

- Maximum weight capacity: 2000 lbs static weight, 500 lbs working weight.
- Do NOT sit on the extreme edge of the table, doing so may cause the table to fold, collapse or personal injury
- When getting up from the table, please do not use the armrest to push yourself up as the armrest will break

## SERVICE

### IMPORTANT: FOR NORTH AMERICA ONLY

For damaged or defective product, questions, replacement parts or any other service support, please contact our customer service department by the below methods:

**For The Best Service, please Email:**  
**[service@paradigmhw.com](mailto:service@paradigmhw.com)**

**Response Time: 1-2 Business Days**

**Emailing us with the information above will be the best method to receive a response during peak business hours**

**Website:**  
**[www.paradigmhw.com](http://www.paradigmhw.com)**

**Toll-Free:**

**1-844-641-7921**

**(8:00 AM - 5:00 PM Pacific Standard Time, Daily)**

**Response time may vary via calling**

**Please have the following information ready when requesting for service:**

- **Your name**
- **Phone number**
- **Model number**
- **Serial number**
- **Part number**
- **Proof of Purchase**

**For damaged or defective product please contact our customer service before returning to the store.**

**Paradigm Health & Wellness, Inc.**

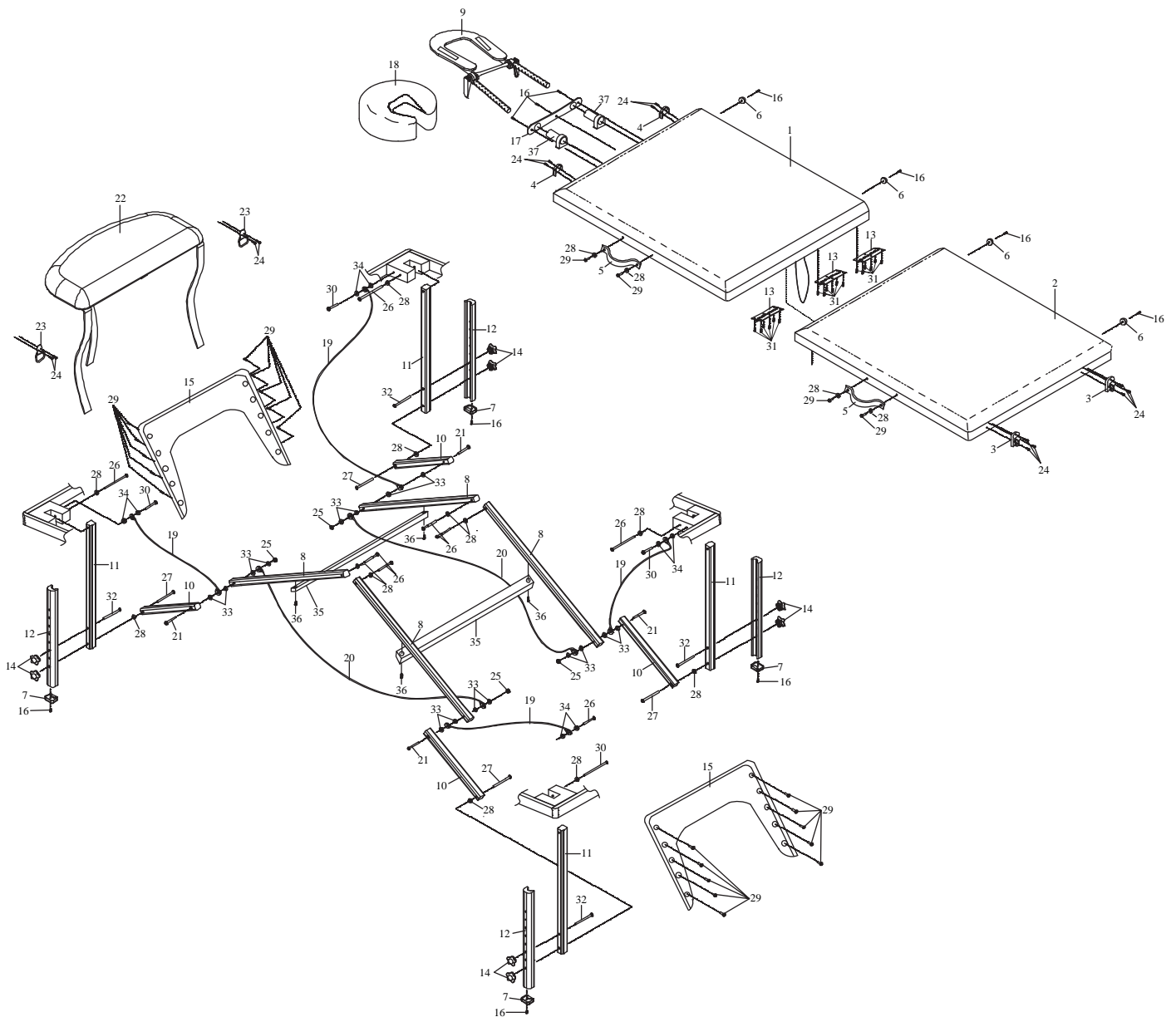
**1189 Jellick Ave.**

**City of Industry, CA 91748, USA**

## SAFETY PRECAUTIONS

1. Examine the Massage Table for damage before each use.
2. Use the Massage Table on a level surface.
3. Do not use alcohol based cleaners when cleaning the vinyl. This could cause damage to the vinyl material. Use warm soapy water and wipe dry.
4. Make sure when using the table that all four legs should be adjusted to the same level. Using the legs at different levels can cause the Massage Table to be unstable and cause injury.
5. Do not allow children to play on the Massage Table.
6. Do not overload the table beyond the recommended weight limit. This could result in serious injury to the user.
7. Maximum weight capacity- static weight: 2000 lbs / 907 kgs  
working weight: 500 lbs / 227 kgs

# OVERVIEW DRAWING



## PARTS LIST

01	Front Bed Frame	1
02	Red Bed Frame	1
03	Upper Buckle	2
04	Lower Buckle	2
05	Handle	2
06	Rubber Foot	4
07	Lower Leg End Cap	4
08	Long Brace	4
09	U Shaped Headrest	1
10	Short Brace	4
11	Upper Leg	4
12	Lower Leg	4
13	Hinge	3
14	Leg Knob	8
15	End Panel	2
16	Self-Tapping Screw M4x20mm	11
17	Headrest Bushing Plate	1
18	Face Cushion	1
19	Short Cable	4

20	Long Cable	2
21	Self-Tapping Bolt M6x65mm	4
22	Armrest	1
23	Armrest Loop	2
24	Self-Tapping Screw M3x20mm	14
25	Nylon Nut M6	4
26	Bolt M6x75mm	8
27	Self-Tapping Bolt M6x75mm	4
28	Plastic Washer Ø18xØ6x2t	16
29	Truss Head Screw M4x20mm	24
30	Bolt M6x30mm	4
31	Self-Tapping Screw M4x20mm	18
32	Self-Tapping Screw M6x50mm	4
33	Plastic Washer Ø13xØ6x2t	16
34	Plastic Washer Ø15xØ6x4t	8
35	Cross Brace	2
36	Self-Tapping Bolt M4x20mm	4
37	U Shaped Headrest Bushing	2



# ASSEMBLY

1

Release the **Upper/Lower Buckles (3/4)** and then open the table so that it is standing on the side with the **Rubber Feet (6)**. Take out the **Face Cushion (18)**, **U Shaped Headrest (9)**, and **Armrest (22)**, from underneath of the table.



2

Pull out the **Upper and Lower Legs (11/12)** and straighten each joint.



3

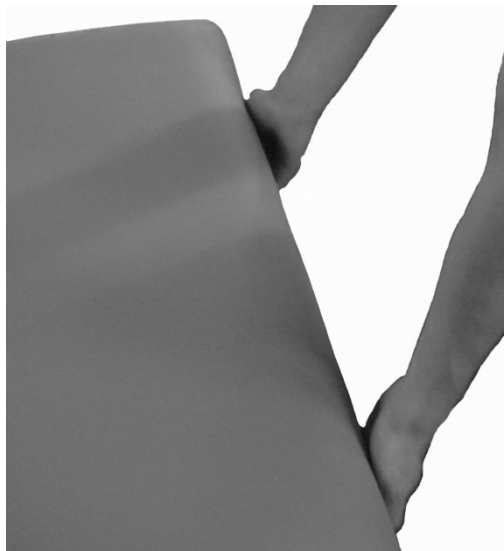
Lift the table up until the **Upper and Lower Legs (11/12)** are flat on the floor.



## ASSEMBLY

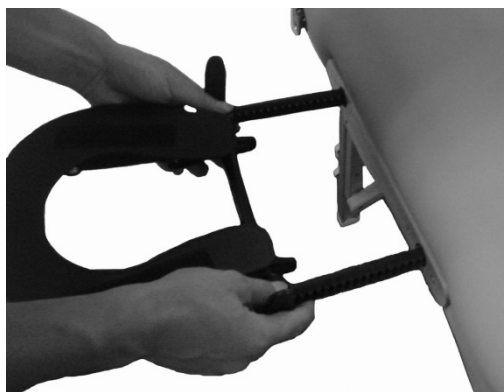
4

Lift one end of the table and pull out to open table fully.



5

Insert the **U Shaped Headrest (9)** into the holes of the **Headrest Bushing Plate (17)**.



6

Attach the **Armrest (22)** Corner Straps onto **Armrest Loops (23)** underneath the **Front Bed (1)**.



## ASSEMBLY

7

Attach the strap of the **Armrest (22)** to the **U Shaped Headrest (9)**.



8

Place the **Face Cushion (18)** onto the **U Shaped Headrest (9)** by lining up the Velcro pads on the **U Shaped Headrest (9)** to the underside of the **Face Cushion (18)**.

***WARNING: HEADREST IS FOR LIGHT USE ONLY! DO NOT PLACE HEAVY WEIGHT OR STRONG PRESSURE WHEN RESTING.***



# ADJUSTMENT

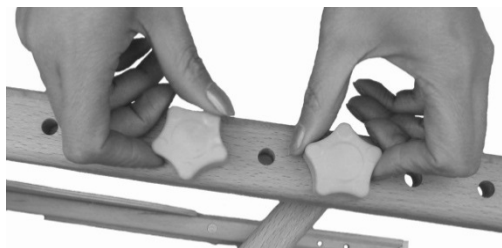
## Adjusting the angle of the Headrest

Press up on the Locking Handles and then adjust the Headrest to the desired angle. Press down on the Locking Handles after adjustment to lock into place.

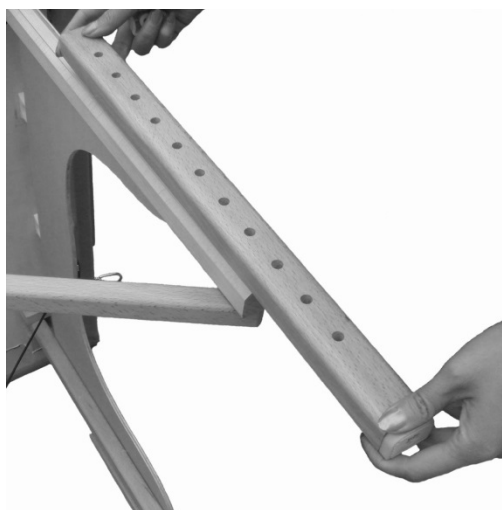


## Adjusting the Table Height

Lay the table on the side with the **Rubber Feet (6)** and then remove the **Leg Knobs (14)**.



Remove the **Lower Leg (12)** and then place the **Lower Leg (12)** back onto the **Upper Leg (11)** matched up to the desired holes for adjusting the height of the table.

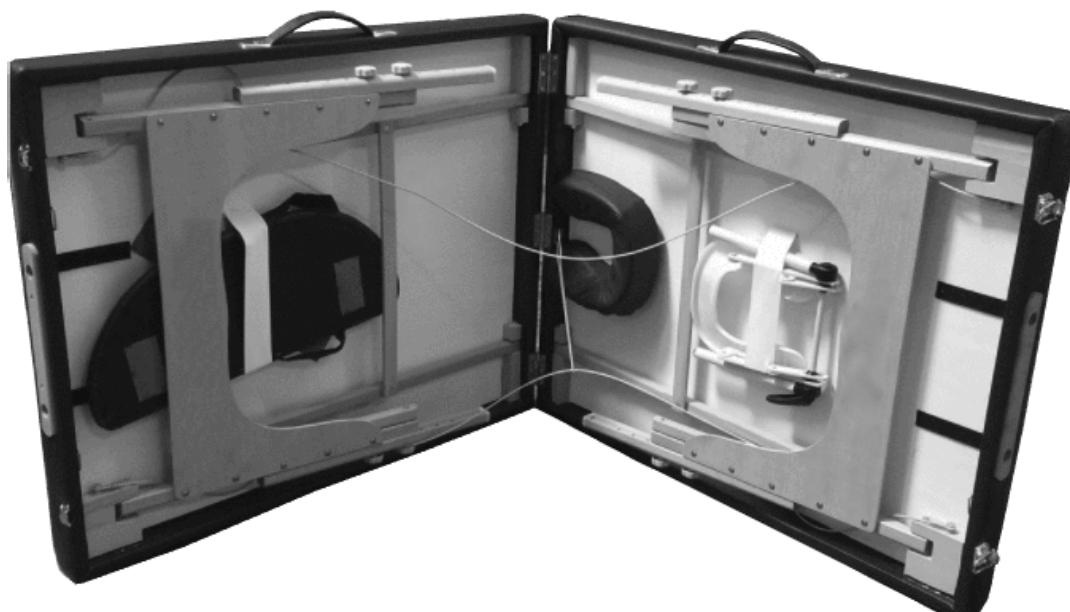


Tighten the **Leg Knobs (14)** after adjustment.

**NOTE:** *Adjust all of the four Legs to the same height.*



## STORAGE



1. Lay the table on its side and fold at an angle.
2. Completely fold the Legs flat under the table.
3. Make sure the **Short/Long Cables (19/20)**, **U Shape Headrest (9)**, **Face Cushion (18)**, and **Armrest (22)** are inside the table before closing it.

## MAINTENANCE INSTRUCTIONS

You should check your massage table for any kind of wear and tear before each and every use.

1. Check the legs, bed and cables for wear and tear.
2. Replace damaged and worn components immediately.
3. Keep all damaged equipment out of use until it is repaired.

# WARRANTY

## **MANUFACTURER'S LIMITED WARRANTY**

Paradigm Health & Wellness warrants to the original purchaser that this product is free from defects in material and workmanship when used for the purpose intended, under the conditions that it has been installed and operated in accordance with Paradigm's Owner's Manual. Paradigm's obligation under this warranty applies to the following:

<b><u>COMPONENT</u></b>	<b><u>LENGTH OF WARRANTY</u></b>
<b>Structural Frame</b>	<b>1 year</b>

### **Exclusions from Warranty Coverage:**

Paradigm does not warrant against and is not responsible for, and no implied warranty shall be deemed to cover, any product failure, product malfunction, or damages attributable to:

1. Improper installation and/or failure to abide by Paradigm's installation guidelines;
2. Use of this product beyond normal home use, or in an application for which it was not designed;
3. Cosmetic items such as scratches, dents or discolorations;
4. Damage caused by normal wear and tear, vandalism, accidental or by animals;
5. Any act of Nature (such as fire, flooding, snow, ice, hurricane, earthquake, lightning or other natural disaster), environmental condition (such as air pollution, mold, mildew, etc.), or staining from foreign substances (such as dirt, grease, oil, etc.);
6. Normal weathering due to exposure to sunlight, weather and atmosphere which can cause colored surfaces to, among other things, flake, chalk, accumulate dirt or stains.
7. Improper operation, alteration, handling, storage, abuse or neglect of the products.

**Paradigm, using its sole discretion, will either repair or replace free of charge any part(s) proven to be defective under normal home use. Any repair or replacement shall provide no new warranty coverage, but shall retain only the remaining portion of the original product's warranty. This warranty is offered only to the original purchaser and is not transferable. Proof of original purchase is required.**

### Ordering Replacement Parts

Replacement parts can be ordered by emailing our customer service department:

**Service@paradigmhw.com**

Open Daily 8:00 AM - 5:00 PM (PST).

When ordering replacement parts please have the following information ready:

- 1. Owner's Manual**
- 2. Model Number**
- 3. Description of Parts**
- 4. Part Number**
- 5. Date of Purchase**

## PART REQUEST FORM

**Paradigm Health & Wellness, Inc.**

EMAIL THIS FORM WITH YOUR RECEIPT OF PURCHASE TO  
**[Service@paradigmhw.com](mailto:Service@paradigmhw.com)** \*

NAME: \_\_\_\_\_

ADDRESS: \_\_\_\_\_

CITY: \_\_\_\_\_ STATE: \_\_\_\_\_

ZIP: \_\_\_\_\_

TELEPHONE:

(Day) \_\_\_\_\_

(Night) \_\_\_\_\_

SERIAL#: \_\_\_\_\_

MODEL#: \_\_\_\_\_

PURCHASE

DATE: \_\_\_\_\_

PLACE OF

PURCHASE: \_\_\_\_\_

PART #	DESCRIPTION	QTY

**“YOUR ORDER WILL BE PROCESSED WITHIN 3 BUSINESS DAYS”**

This form can also be faxed to #: 626-810-2166