



OWNER'S MANUAL

9102.3-082517

Spa Massage Table

Model 9102

The specifications of this product may vary from this photo and are subject to change without notice.

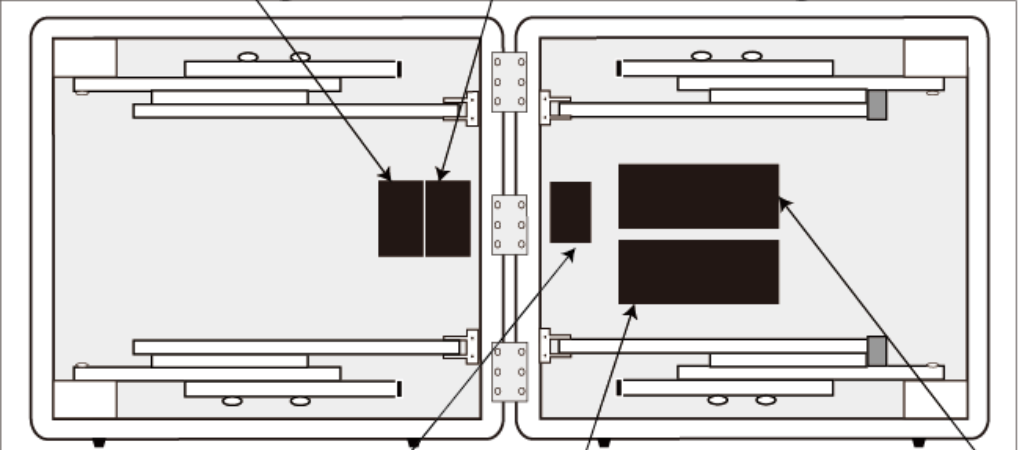
For more brand information, please visit www.IRONMAN.com

IRONMAN® and the "M-DOT" logo are registered trademarks of World Triathlon Corporation Official Product of the IRONMAN® TRIATHLON. Used here by permission.

TABLE OF CONTENTS

	<i>Page #</i>
Warning label placement	3
<hr/>	
Service	4
<hr/>	
Safety precautions	5
<hr/>	
Overview drawing	6
<hr/>	
Part list	7
<hr/>	
Assembly	8
<hr/>	
Adjustment	10
<hr/>	
Storage	12
<hr/>	
Maintenance instructions	12
<hr/>	
Warranty	13
<hr/>	
Part request fax foam	14


WARNING LABEL PLACEMENT



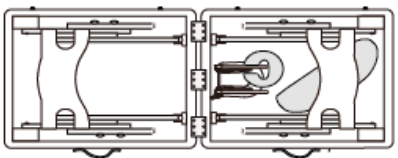
<p>Not to be removed until delivered to the consumer</p> <p>This label is affixed in compliance with Provincial Law</p> <p>This article contains NEW MATERIAL ONLY</p> <p>Made by reg. no. 90T-1264507</p> <p>Content: Polyurethane Foam</p>	<p>Ne pas enlever avant la livraison au consommateur</p> <p>Cette étiquette est apposée conformément aux lois provinciales.</p> <p>Entièrement fabriqué de MATÉRIAUX NEUFS</p> <p>No d'enregistrement du fabricant 90T-1264507</p> <p>Contenu : mousse de polyuréthane</p>
---	---

<p>NOTICE</p> <p>This article does not meet the flammability requirements of California Bureau of Home Furnishings technical bulletin 117. Care should be exercised near open flame or with burning cigarettes.</p>	<p>AVIS</p> <p>Ce produit ne satisfait pas aux critères d'inflammabilité spécifiés à l'article 117 du devis technique du California Bureau of Home Furnishings. Ne pas utiliser près d'une source de chaleur ou d'une flamme nue (cigarettes, etc.)</p>
--	--

<p>Under Penalty of law this tag not to be removed except by the consumer</p> <p>ALL NEW MATERIAL CONSISTING OF POLYURETHANE FOAM PAD 100%</p>	<p>REGISTRY NO. VA25302 (CN)</p> <p>Certification is made by the manufacturer that the materials in this article are described in accordance with law.</p> <p>Paradigm Health and Wellness, Inc. 1189 Jellick Ave. CA 91748 USA</p>	<p>SOUS PEINE DE SANCTION LÉGALE, CETTE ÉTIQUETTE NE PEUT ÊTRE ENLEVÉE PAR UNE PERSONNE AUTRE QUE LE CONSOMMATEUR</p> <p>ENTièrement fabriqué de MATÉRIAUX NEUFS</p> <p>REMBOURRAGE DE MOUSSE DE POLYURETHANE 100 %</p>
<p>NO D'ENREGISTREMENT VA25302 (CN)</p> <p>Cette étiquette est apposée conformément aux lois Canadiennes.</p> <p>Paradigm Health and Wellness, Inc. 1189 Jellick Ave. City of Industry, CA 91748 USA</p>		



Correct placement for accessories



For customer assistance call:
1-844-641-7922 Daily
8 am - 5 pm PST

Pour le service à la clientèle composer le:
1-844-641-7922 Tous les jours 8:00 h - 17 h (HNP)

⚠ ATTENTION

- Le poids maximum: statique 909 kg, actif 227 kg
- Ne vous asseyez pas sur le bord extrême de la table, pendant que faire peut causer ainsi la table de plier ou s'écrouler et causer le dégât de la table ou blessure personnelle.
- En se levant de la table, svp n'utilisez pas l'accoudoir pour se soulever car l'accoudoir se cassera.

⚠ CAUTION

- Maximum weight capacity: 2000 lbs static weight, 500 lbs working weight.
- Do NOT sit on the extreme edge of the table, doing so may cause the table to fold, collapse or personal injury
- When getting up from the table, please do not use the armrest to push yourself up as the armrest will break

SERVICE

To request for product service and order replacement parts, please call our customer service department at

1-844-641-7922

Daily, 8:00 am-5:00 pm Pacific Standard Time,

or email at: **service@paradigmhw.com**

Please have the following information ready when requesting for service:

Your name	Phone number	Owner's manual
Model number	Serial number	Part number
Date of Purchase		

***If the product has major defects which prevent it from functioning properly, please return it to the store of purchase within the period allowed by the store.**

Paradigm Health & Wellness, Inc.

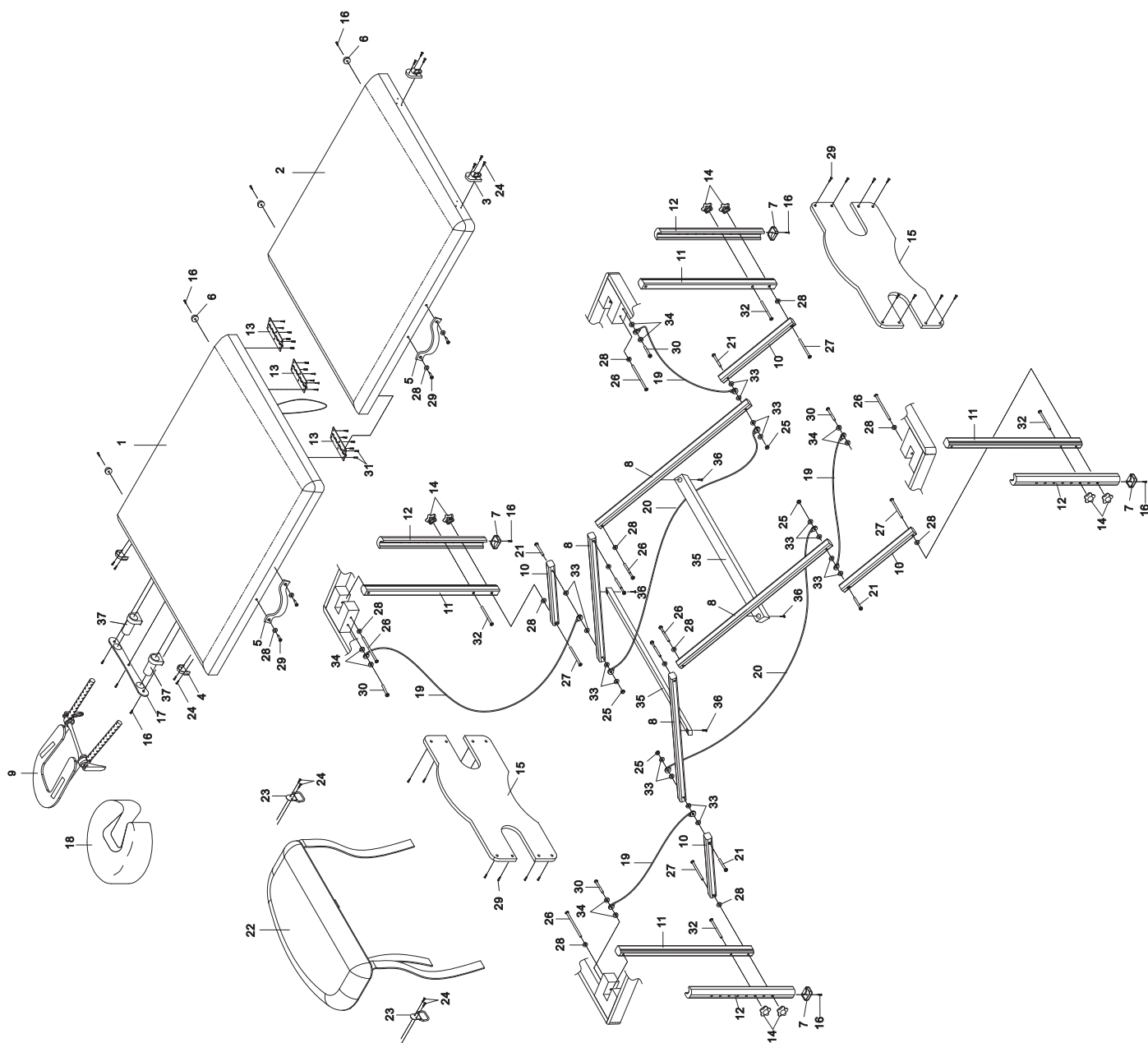
1189 Jellick Ave.

City of Industry, CA 91748

SAFETY PRECAUTIONS

- (1) Maintain the table periodically. Make sure all screws are secure and the cable has not deteriorated or frayed. Make sure there are no cracks in the wood structure.
- (2) Do not overload the table beyond the recommended weight limit. This could result in serious injury to the user.
- (3) Do not use alcohol based cleaners when cleaning the vinyl. This could cause damage to the vinyl material. Use warm soapy water and wipe dry.
- (4) Make sure when using the table that all four legs are at the same level. Using the legs at different levels can cause the table to be unstable and cause injury.
- (5) Maximum weight capacity- static weight: 2000 lbs/909 kgs
working weight: 500 lbs/227 kgs

OVERVIEW DRAWING



PART LIST

Part#	Description	Quan.	Part#	Description	Quan.
001	Front Bed with Frame	1	020	Long Cable	2
002	Rear Bed with Frame	1	021	M6x65mm Self Tapping Bolt	4
003	Upper Buckle	2	022	Armrest	1
004	Lower Buckle	2	023	Armrest Loop	2
005	Handle	2	024	M3x20mm Round Head Self Tapping Screw	14
006	Rubber Foot	4	025	M6 Nylon Nut	4
007	Lower Leg End Cap	4	026	M6x75mm Bolt	8
008	Long Brace	4	027	M6x75mm Self Tapping Bolt	4
009	U Shaped Headrest	1	028	Plastic Washer Ø18xØ6x2t	16
010	Short Brace	4	029	M4x18mm Mod. Truss Head Screw	20
011	Upper Leg	4	030	M6x30mm Bolt	4
012	Lower Leg	4	031	M4x20mm Self Tapping Screw	18
013	Hinge	3	032	M6x50mm Self Tapping Bolt	4
014	Leg Knob	8	033	Plastic Washer Ø13xØ6x2t	16
015	End Panel	2	034	Plastic Washer Ø15xØ6x4t	8
016	M4x20mm Round Head Self Tapping Screw	11	035	Cross Brace	2
017	Headrest Bushing Plate	1	036	M4x20mm Self Tapping Bolt	4
018	Face Cushion	1	037	Bushing	2
019	Short Cable	4			

ASSEMBLY

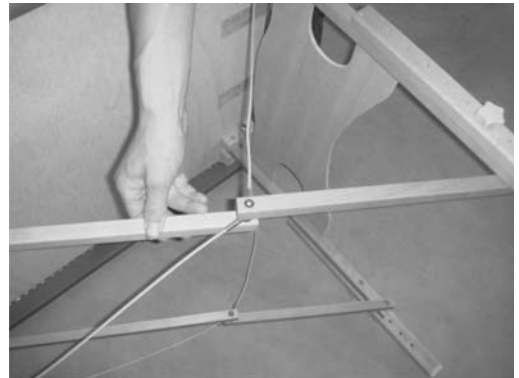
1

Release the Buckles and then open the table so that it is standing on the side with the Rubber Feet. Take out the Face Cushion, U Shaped Headrest, and Armrest from underneath of the table.



2

Pull out the left and right pair of Legs and straighten each joint.



3

Lift the table up until all four legs are on the floor.



ASSEMBLY

4

Lift one end of the table and pull out to open table fully.



5

Insert both Right/Left Headrest Sticks with Headrest into the holes of the Headrest Bushing Plate.



6

Attach armrest corner straps onto Armrest Loops underneath the Front Bed.



ASSEMBLY

7

Attach front strap to the U Shaped Headrest.



8

Place the Face Cushion onto the U Shaped Headrest by lining up the Velcro pads.

WARNING: HEADREST IS FOR LIGHT USE ONLY! PLEASE DO NOT PLACE HEAVY WEIGHT OR STRONG PRESSURE WHEN RESTING.



ADJUSTMENT

Adjusting the angle of the Headrest

Press up on the Locking Handles and then adjust the Headrest to the desired angle. Press down on the Locking Handles after adjustment to lock into place.



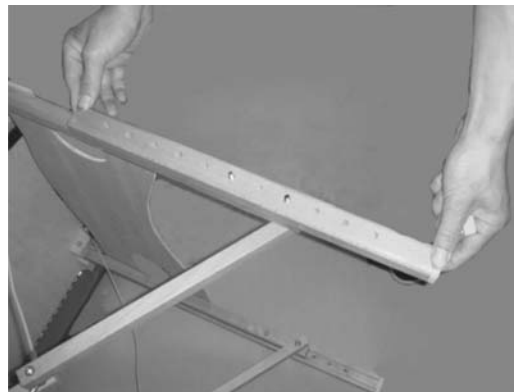
ADJUSTMENT

Adjusting the Table Height

Lay the table on the Rubber Footed side and then remove the Leg Knobs.



Remove the Lower Leg and then place the Lower Leg back onto the Upper Leg matched up to the desired holes for adjusting the height of the table.

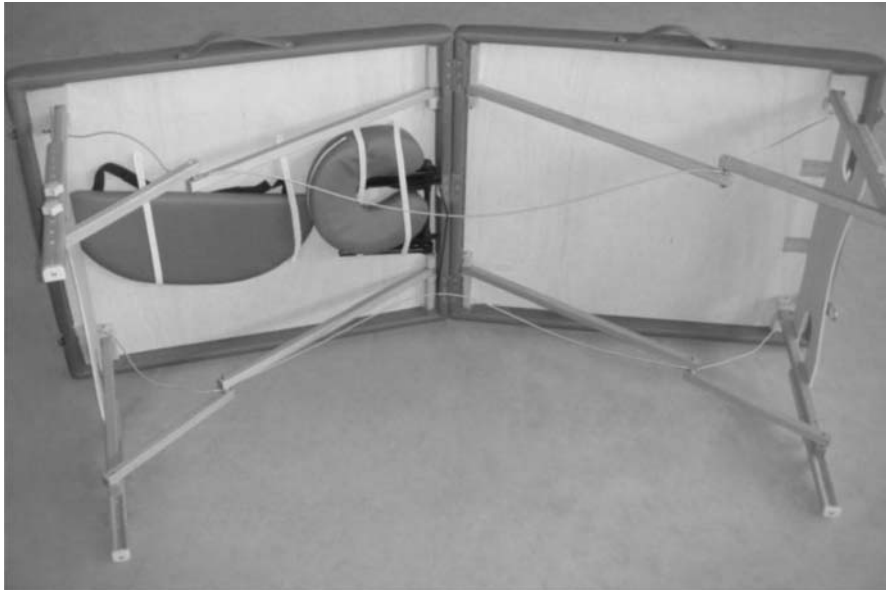


Tighten the Leg Knobs after adjustment.

NOTE: Adjust all of the four Legs to the same height.



STORAGE



1. Lay the table on its side and fold at an angle.
2. Completely fold the Legs flat under the table.
3. Make sure the Cables, U Shape Headrest, Face Cushion, and Armrest are inside the table before closing it.

MAINTENANCE INSTRUCTIONS

You should check your massage table for any kind of wear and tear before each and every use.

1. Check the legs, bed and cables for wear and tear.
2. Replace damaged and worn components immediately.
3. Keep all damaged equipment out of use until it is repaired.

WARRANTY

MANUFACTURER'S LIMITED WARRANTY

Paradigm Health & Wellness warrants to the original purchaser that this product is free from defects in material and workmanship when used for the purpose intended, under the conditions that it has been installed and operated in accordance with Paradigm's Owner's Manual. Paradigm's obligation under this warranty applies to the following:

<u>COMPONENT</u>	<u>LENGTH OF WARRANTY</u>
Structural Frame	1 year FOR HOME USE ONLY

Exclusions from Warranty Coverage:

Paradigm does not warrant against and is not responsible for, and no implied warranty shall be deemed to cover, any product failure, product malfunction, or damages attributable to:

1. Improper installation and/or failure to abide by Paradigm's installation guidelines;
2. Use of this product beyond normal home use, or in an application for which it was not designed;
3. Cosmetic items such as scratches, dents or discolorations;
4. Damage caused by normal wear and tear, vandalism, accidental or by animals;
5. Any act of Nature (such as fire, flooding, snow, ice, hurricane, earthquake, lightning or other natural disaster), environmental condition (such as air pollution, mold, mildew, etc.), or staining from foreign substances (such as dirt, grease, oil, etc.);
6. Normal weathering due to exposure to sunlight, weather and atmosphere which can cause colored surfaces to, among other things, flake, chalk, accumulate dirt or stains.
7. Improper operation, alteration, handling, storage, abuse or neglect of the products.

Paradigm, using its sole discretion, will either repair or replace free of charge any part(s) proven to be defective under normal home use. Any repair or replacement shall provide no new warranty coverage, but shall retain only the remaining portion of the original product's warranty. This warranty is offered only to the original purchaser and is not transferable. Proof of original purchase is required.

Ordering Replacement Parts

Replacement parts can be ordered by calling or emailing our customer service department:

1-844-641-7922

Daily 8:00 AM - 5:00 PM (PST).

service@paradigmhw.com

When ordering replacement parts please have the following information ready:

1. Owner's Manual
2. Model Number
3. Description of Parts
4. Part Number
5. Date of Purchase

PART REQUEST FAX FORM

Paradigm Health & Wellness, Inc. PARTS REQUEST FAX FORM

Please fax this form to (1-626-810-2166)

OR YOU CAN EMAIL CUSTOMER SERVICE REQUESTS TO
service@paradigmhw.com

NAME: _____

ADDRESS: _____

CITY _____ STATE _____ ZIP _____

TELEPHONE: (Day) _____

(Night) _____

(Email Address) _____

SERIAL#: _____

MODEL#: _____

PURCHASE DATE: _____

PURCHASE FROM: _____

PART #	DESCRIPTION	QTY

"YOUR ORDER WILL BE PROCESSED WITHIN 3 BUSINESS DAYS"

OFFICIAL USE ONLY

SHIP DATE: _____

TRK #: _____

BACK ORDER: _____