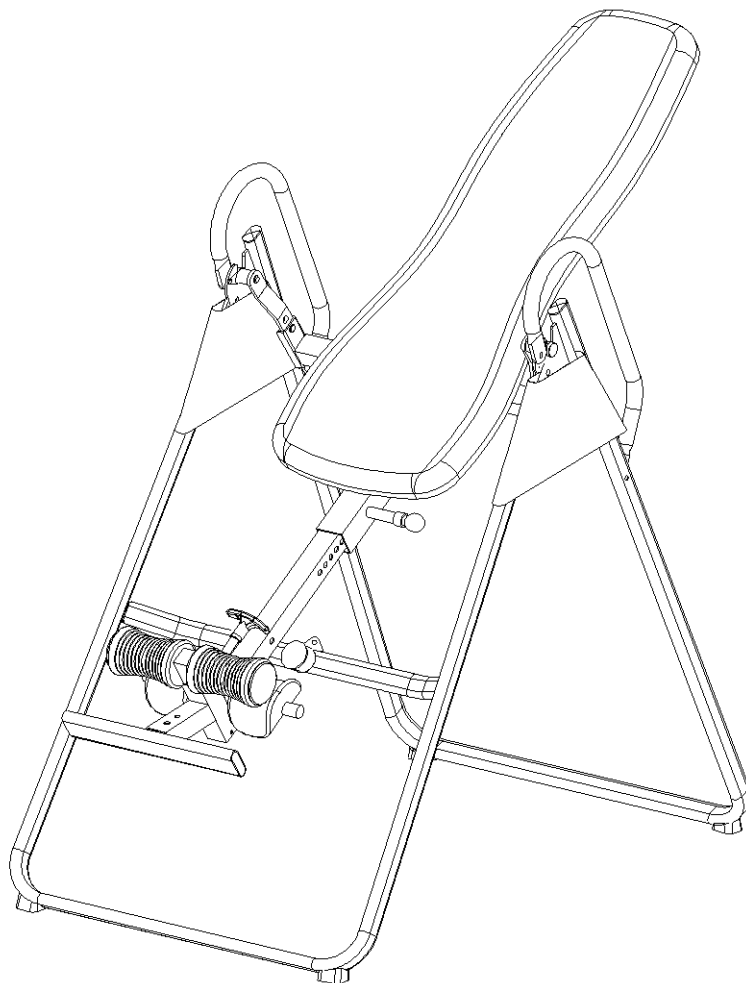


# OWNER'S MANUAL



## Infrared Inversion Table

**Item#5212**

The specifications of this product may vary from this photo and are subject to change without notice.  
IRONMAN, IRONMAN TRIATHLON and M-DOT are registered trademarks of World Triathlon Corporation.  
This product is licensed by the World Triathlon Corporation.



## TABLE OF CONTENTS

SERVICE-----	2
IMPORTANT SAFETY INSTRUCTIONS -----	3
LABEL PLACEMENT -----	6
OVERVIEW DRAWING-----	7
HARDWARE & TOOLS LIST-----	8
PARTS LIST-----	9
ASSEMBLY-----	10
SUPPLEMENTAL INSTRUCTION FOR CONNECTING CABLES---	17
ROUTING THE WIRE-----	18
SAFETY OPERATING INSTRUCTION-----	20
OPERATION AND ADJUSTMENTS-----	21
STORAGE-----	25
REMOTE CONTROL & CONTROLLER OPERATION -----	26
WARMUP-----	27
WARRANTY-----	29
PART REQUEST FROM-----	30

## SERVICE

### IMPORTANT: FOR NORTH AMERICA ONLY

For damage or defective product, questions, replacement parts or any other service support, please contact our customer service department (8:00 AM - 5:00 PM Pacific Standard Time, Daily) by below methods:

For Best Service Email:

**[Service@paradigmhw.com](mailto:Service@paradigmhw.com)** \*

\*\*Response time may vary.

Website:

**[www.paradigmhw.com](http://www.paradigmhw.com)**

Toll-Free:

**1-844-641-7922\*\***

Please have the following information ready when requesting for service:

Your name

Phone number

Model number

Serial number

Part number

Proof of Purchase

For damaged or defective product please contact our customer service before returning to the store.

**\* Emailing us with the information above will be the best method to receive a response during peak business hours.**

Paradigm Health & Wellness, Inc.

1189 Jellick Ave.

City of Industry, CA 91748, USA

## IMPORTANT SAFETY INSTRUCTIONS

**Read all instructions carefully before assembling operating this product. Retain this owner's manual and keep the original purchase receipt for future reference.**

1. Consult your physician or other health care professionals before using the inversion table.
2. Always wear proper exercise apparel when using the equipment.
3. If any time you feel faint, light-headed or dizziness while operating the equipment, stop exercise immediately. You should also stop exercising if you are experiencing pain or pressure.
4. Keep children and pets away from the equipment while in use.
5. Only one person should use the equipment at a time.
6. Make sure your equipment is correctly assembled before you use it. Be sure all screws, nuts, and bolts are tightened prior to use.
7. Do not operate this or any exercise equipment if it is damaged.
8. Watch your body: come up slowly, dizziness after a session means you came up too fast. Wait a while after eating before using the inversion table. If you get nauseous, come up as soon as you feel queasy.
9. Always use this equipment on a clear and level surface. Do not use outdoors or near water.
10. Keep hands and feet away from any moving parts. Do not insert any object into any openings.
11. Keep loose clothes, jewelry away from moving parts.
12. **WARNING: ALWAYS HOLD ON TO THE HANDLEBARS AND GO BACK SLOWLY WHEN INVERTING. FAILURE TO COMPLY COULD RESULT IN SERIOUS BODILY INJURY.**
13. Children under the age of 12 should not use the following fitness equipment.
14. If any part of the cable/wire is stripped or damaged, STOP using the far infrared foam bed immediately.
15. Please always unplug the far infrared foam bed from the electrical outlet immediately after using and before cleaning.
16. Do not operate the far infrared foam bed in a wet or moist environment and keep dry.
17. Do not allow water to directly contact any part of the far infrared foam bed.
18. For indoors household use only.
19. For any problems please contact customer service at the contact number in this manual.

**DO NOT ATTEMPT TO SERVICE THE UNIT YOURSELF.**

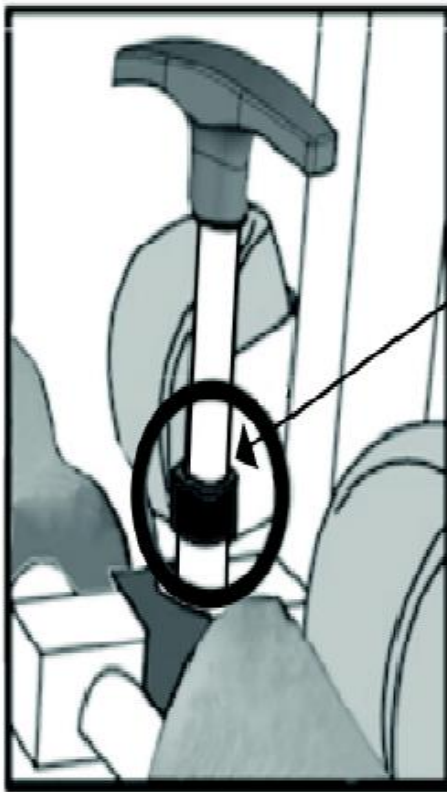
**WARNING:** Consult with your personal physician to see if inversion equipment is appropriate for you. This is especially important for people with pre-existing health problems. Do not use this equipment without your physician's approval.

Do not use this equipment if you have any of the following conditions or ailments:

- . Extreme obesity
- . Glaucoma, retinal detachment or conjunctivitis
- . Pregnancy
- . Spinal injury, Cerebral Sclerosis, or acutely swollen joints
- . Middle ear infection
- . High blood pressure, Hypertension, Recent stroke or Transient Ischemic attack
- . Heart or circulatory disorders for which you are being treated
- . Hiatus hernia or Ventral hernia
- . Bone weaknesses including Osteoporosis, Unhealed fractures, Modularly pins, or Surgically implanted orthopedic supports.
- . Use of anti-coagulants including Aspirin in high doses.

**The Maximum Weight Capacity for this product is 275 lbs/ 125 kgs.**

# SAVE THESE INSTRUCTIONS



**Correct:**  
Locking pin  
fully engaged



**WRONG:**  
Locking pin  
NOT fully  
engaged

Always check to make sure that the ankle locking pin is fully engaged before each use. Make sure that the front and rear ankle clamps are secured tightly against your ankles to prevent from falling when the table inverts.

**WARNING:** Failure to fully engage the locking pin could result in serious injury.

## IMPORTANT SAFETY INSTRUCTIONS

When using the far infrared foam bed, basic precautions should always be followed, including the following:

Read all instructions before using this unit.

**DANGER** - To reduce the risk of electric shock:

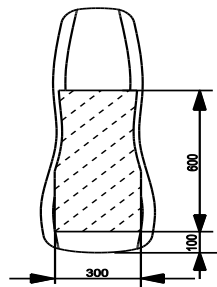
**WARNING** - To reduce the risk of burns, fire, electric shock, or injury to persons:

1. The far infrared foam bed should never be left unattended when plugged in. Unplug from outlet when not in use and before cleaning.
2. Excessive heating may occur and cause fire, electric shock, or injury to persons.
3. Close supervision is necessary when this unit is used by, on, or near children, invalids or disabled persons.
4. Use this unit only for its intended use as described in this manual. Do not use for other purpose that is not recommended by the manufacturer.
5. STOP using this unit IMMEDIATELY if it has a damaged cord or plug. If it is not working properly, been dropped, damaged, or dropped into water.
6. Keep the cord away from any heated surface.
7. Do not use it outdoors.
8. Do not operate where aerosol (spray) products are being used or where oxygen is being administered.
9. To disconnect, turn the remote control or controller to the "OFF" position, then remove plug from outlet.
10. Do not use on an infant or on a sleeping person.
11. **CABLE STORAGE:** When not in use, wind the cable around the anchors on the rear right frame as illustrated. Do not lay it on the ground to avoid cable damage.



### THE DIMENSION OF HEATING PAD:

There is a heating pad inside the foam bed. The heating pad is 23.62" (length) x 11.81" (width), or 600mm (length) x 300mm (width) in dimension. The heating area is illustrated as below:



# LABEL PLACEMENT

## ⚠ WARNING

To avoid serious injury, hold on to handle bars and invert slowly.

## ⚠ AVERTISSEMENT

Pour éviter des blessures graves, bien tenir les poignées de sécurité et procéder à l'inversion lentement.

## ⚠ WARNING

Feet must be secured properly before use.

## ⚠ AVERTISSEMENT

Les pieds doivent être proprement serres avant utilisation.

## ⚠ WARNING

Maximum weight capacity is 275 lbs.

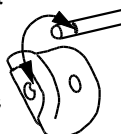
## ⚠ AVERTISSEMENT

Le poids maximum pour ce produit est 125 kgs.

## ⚠ WARNING ⚠ AVERTISSEMENT

Heel Bracket must be secured in slot before use.

Support de talon doit être fixé dans la fente, avant utilisation.



## ⚠ WARNING

THIS EQUIPMENT IS INTENDED FOR USE BY ADULTS AND CHILDREN 12 YEARS AND OLDER. POSSIBILITY OF SEVERE INJURY OR DEATH IF USED IMPROPERLY. PLEASE FOLLOW ALL DIRECTIONS BEFORE USE. KEEP PERSON UNDER THE AGE OF 12 AWAY! REPLACE LABELS IF THEY ARE DAMAGED, ILLEGIBLE, OR REMOVED. PLEASE REVIEW ALL WARNING AND INSTRUCTIONS BEFORE ASSEMBLY AND USAGE. ALL INSTRUCTIONS SHOULD BE FOLLOWED PRIOR TO ASSEMBLY AND USAGE.

## ⚠ AVERTISSEMENT

CET ÉQUIPEMENT EST DESTINÉ À ÊTRE UTILISÉ PAR DES ADULTES ET DES ENFANTS DE PLUS DE 12 ANS. TOUTE UTILISATION INCORRECTE PEUT OCCASIONNER DES BLESSURES GRAVES OU MORTELLES. SUIVRE LES INSTRUCTIONS D'UTILISATION. TENIR LES PERSONNES DE MOINS DE 12 ANS À L'ÉCART! REMPLACEZ LES ÉTIQUETTES ENDOMMAGÉES, ILLISIBLES, OU MANQUANTES. VEUILLEZ LIRE ATTENTIVEMENT TOUTES LES INSTRUCTIONS ET MISES EN GARDE AVANT DE PROCÉDER À L'ASSEMBLAGE OU D'UTILISER L'APPAREIL. BIEN SUIVRE TOUTES LES INSTRUCTIONS AVANT L'UTILISATION OU L'ASSEMBLAGE.

**IRONMAN**

For customer assistance call:

**1-844-641-7922**

8 am - 5 pm PST  
Mon - Fri

Pour le service à la clientèle composer le:

**1-844-641-7922**

Du lundi au vendredi  
8:00 h - 17 h (HNP)



8 90699 06211 2

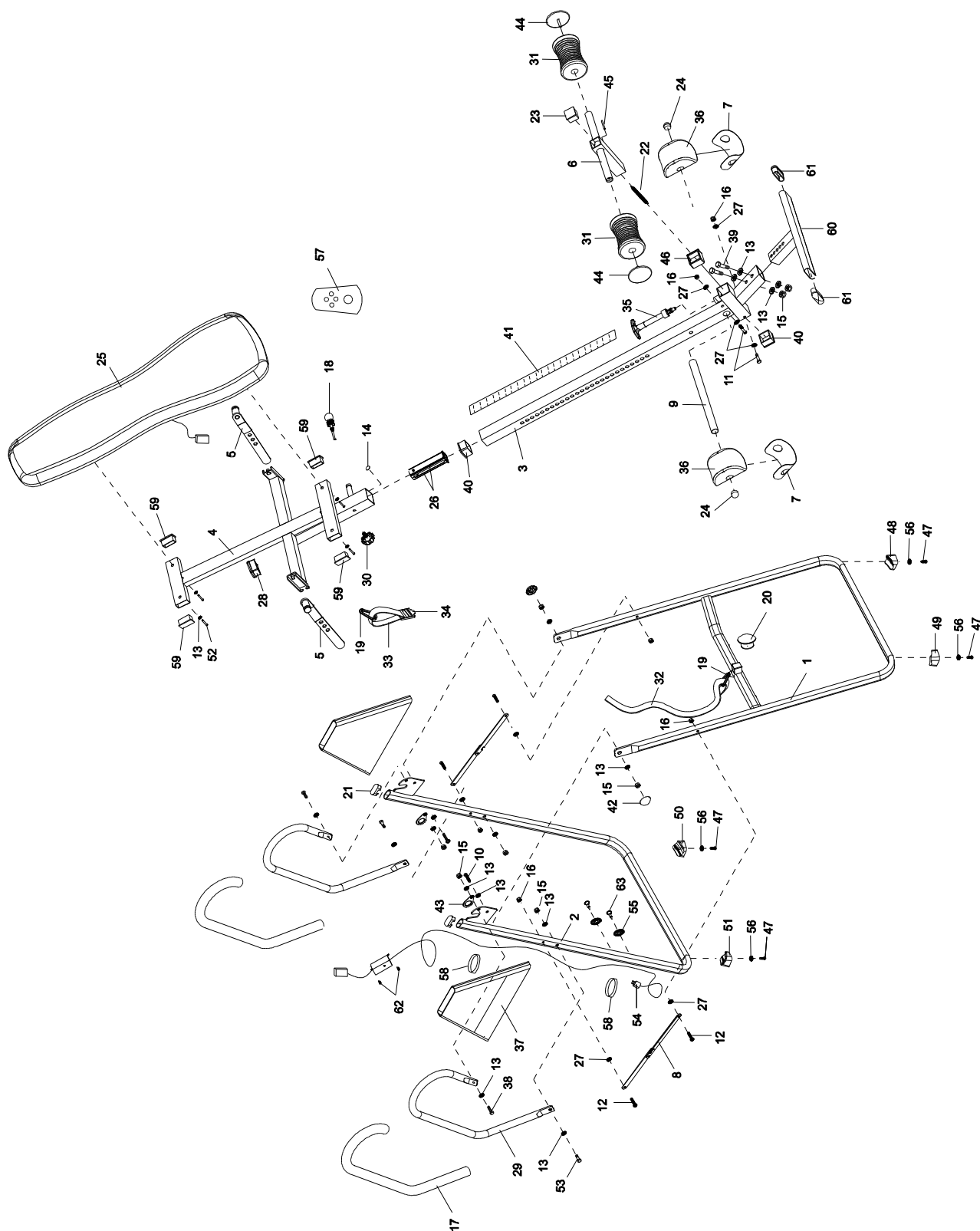
114673521100001

Serial number / Numéro de série:

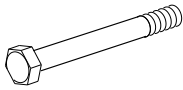
MADE IN CHINA / FABRIQUE EN CHINE



# OVERVIEW DRAWING



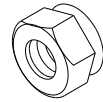
## HARDWARE & TOOLS LIST



(11) Hex Head Bolt M6x47  
2 PCS



(13) Washer Ø20xØ8.5x1.5  
12 PCS



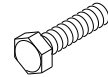
(15) Lock Nut M8  
6 PCS



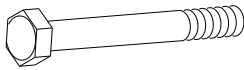
(16) Lock Nut M6  
2 PCS



(27) Washer Ø16xØ6.5x1.0  
4 PCS



(38) Hex Head Bolt  
M8x23  
2 PCS



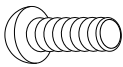
(39) Hex Head Bolt  
M8x50  
2 PCS



(42) Nut Cap Ø27xØ13.5  
2 PCS



(43) Pivot Arm Ring  
2 PCS



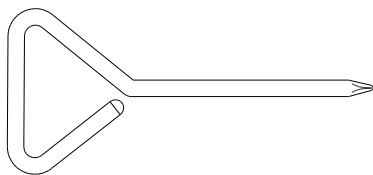
(47) Phillips Bolt M6x20  
4 PCS



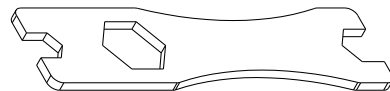
(53) Hex Head Bolt  
M8x38  
2 PCS



(56) Washer Ø12xØ6.5x1.0  
4 PCS



Phillips Screwdriver  
1 PC



Wrench M12x14  
2 PCS

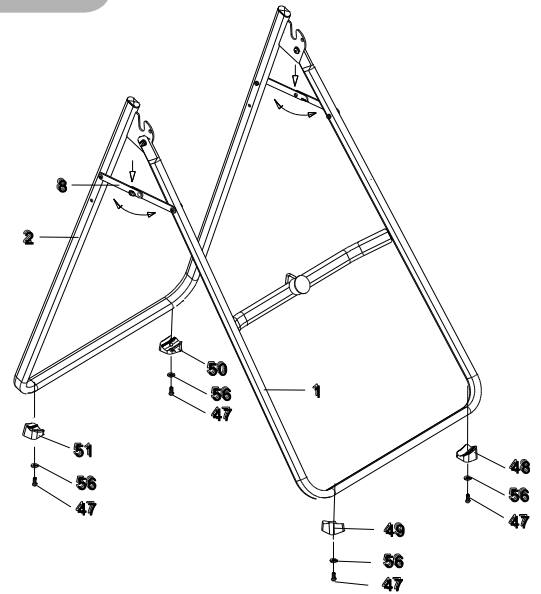
## PARTS LIST

Part#	Description	Q'ty.	Part#	Description	Q'ty.
001	Front U-Frame	1	033	Loop Strap	1
002	Rear U-Frame	1	034	Strap Lock	1
003	Adjustable Boom	1	035	"T" Type Spring Knob	1
004	Bed Frame	1	036	Rubber Rear Heel Holder	2
005	Pivot Arm	2	037	Protective Cover	2
006	Adjustable Instep Frame	1	038	Hex Head Bolt M8x23	2
007	Steel Heel Holder Bracket	2	039	Hex Head Bolt M8x50	2
008	Folding Arm	2	040	Square End Cap (□38)	2
009	Rod	1	041	Height Scale	1
010	Bolt M8x23	2	042	Nut Cap Øx27xØ13.5	2
011	Hex Head Bolt M6x47	2	043	Pivot Arm Ring	2
012	Phillips Bolt M6x30	4	044	Rod Cap	2
013	Washer Ø20xØ8.5x1.5	20	045	Spring Latch	1
014	Round Plate	1	046	Plastic Bushing	1
015	Lock Nut M8	8	047	Phillips Bolt M6x20	4
016	Lock Nut M6	6	048	Left Front Foot Cap	1
017	Foam Grip	2	049	Right Front Foot Cap	1
018	Ball Spring Knob	1	050	Left Rear Foot Cap	1
019	Safety Hook	2	051	Right Rear Foot Cap	1
020	Rubber Pad	1	052	Hex Head Bolt M8x45	4
021	Oval End Cap (20x40)	2	053	Hex Head Bolt M8x38	2
022	Spring	1	054	Controller with Power Cord	1
023	Square End Cap (□33.4)	1	055	Anchor	2
024	Round End Cap	2	056	Washer Ø12xØ6.5x1.0	4
025	Far Infrared Foam Bed	1	057	Remote Control	1
026	Lower Bed Frame Bushing	2	058	Velcro Strap	2
027	Washer Ø16xØ6.5x1.0	8	059	End Cap (□25x50mm)	4
028	Upper Bed Frame Bushing	1	060	Foot Bar	1
029	Handlebar	2	061	Foot Bar End Cap (20x60)	2
030	Knob	1	062	Screw ST3.5x15	2
031	Front Heel Holder	2	063	Screw ST4.0x20	2
032	Nylon Strap	1			

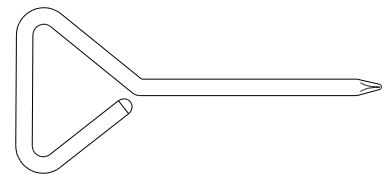
# ASSEMBLY

## Step 1

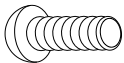
Stand up the base of the machine by separating the frames. Pull the Front and Rear U-Frames (1, 2) as far apart from each others as possible. Then push down on the middle of the two Folding Arms (8) until they are fully locked down. Attach both Front Foot Caps (53) onto the Front Frame (1) with two Ø16xØ6.5x1.0 Washers (27) and M6x25 Bolts (51). Attach Left/Right Front Foot Caps (48, 49) onto the bottom of the Front U-Frame (1) with two M6x20 Phillips Bolts (47) and two Ø12xØ6.5x1.0 Washers (56). Attach Left/Right Rear Foot Caps (50, 51) onto the bottom of the Rear U-Frame (2) with two M6x20 Phillips Bolts (47) and two Ø12xØ6.5x1.0 Washers (56). Tighten bolts with the Phillips Screwdriver provided.



## Tool:



## Hardware:



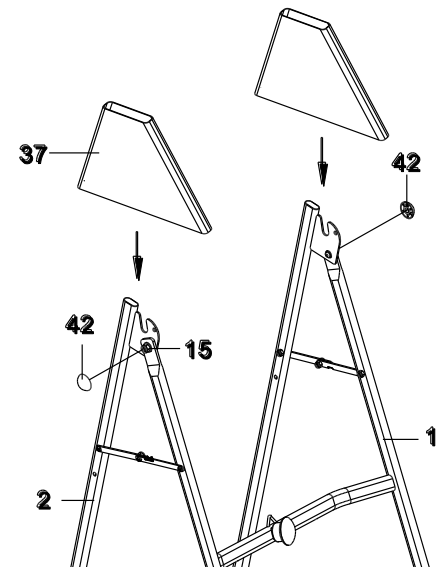
4 Phillips Bolts (M6x20)

4 Washers (Ø12xØ6.5x1.0)

Phillips Screwdriver

## Step 2

Install two Ø27xØ13.5 Nut Caps (42) onto M8Lock Nuts (15). Slide the Protective Covers (37) on to each side of the base as shown, and pull down on the covers until the bottom of the covers are slightly lower than the Folding Arms (8). Use the Velcro straps on the bottom of the covers to secure the covers to the folding arms. When the covers are assembled correctly, the folding arms should be fully covered by the protective covers.



## Hardware:

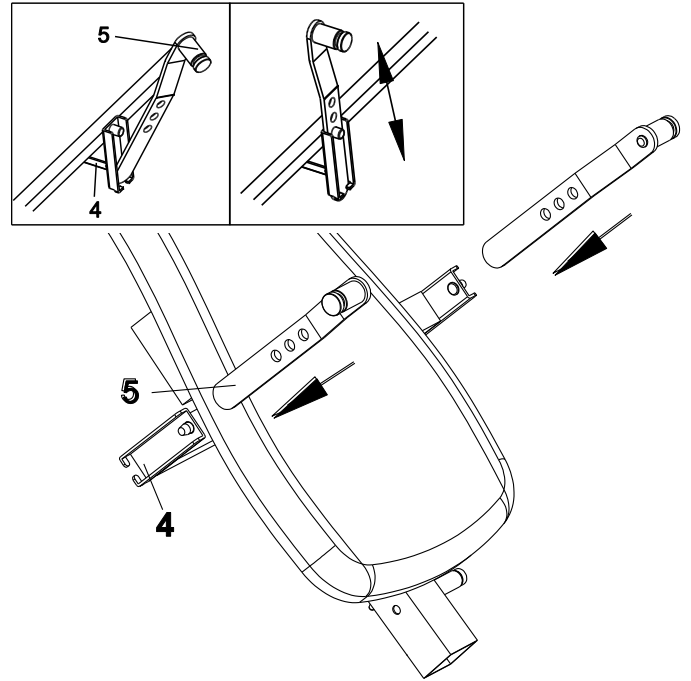


2 Nut Caps (Ø27xØ13.5)

## ASSEMBLY

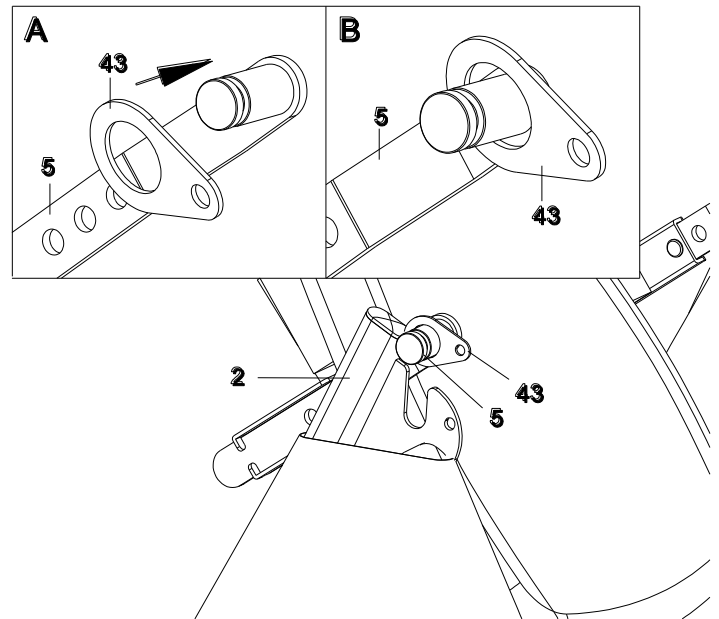
### Step 3

Slide the bottom of the Pivot Arms (5) into the brackets, located at each side of the Bed Frame (4), align to the desired hole on the arm with the peg on the bracket. Insert the peg into the hole to lock the pivot arm in place. It is recommended that you use the bottom hole on the pivot arm until you become more familiar with the equipment.



### Step 4

Install the Pivot Arm Rings (43) onto the Pivot Arms (5). Mount the Bed Frame (4) to the Rear U-Frame (2) by inserting the ends of the Pivot Arms (5) into the channels on the plates. The slotted portion of the rollers on the end of the Pivot Arms (5) should be inserted into the channels on the plates.



### Hardware:



*2 Pivot Arm Rings*

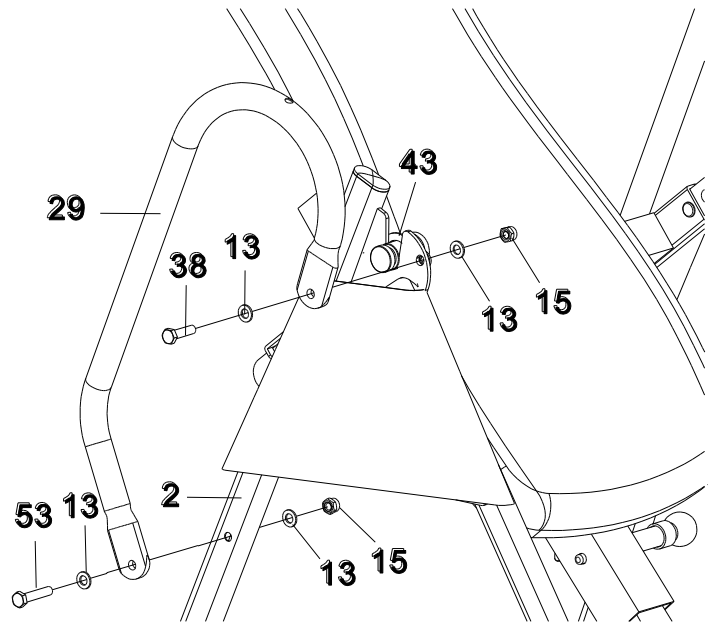
## ASSEMBLY

### Step 5

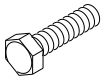
Attach the top end of Handlebar (29) onto the Rear U-Frame (2) and Pivot Arm Ring (43) with one M8x23 Hex Head Bolt (38), one M8 Lock Nut (15), and two Ø20xØ8.5x1.5 Washers (13).

Attach the bottom end of the Handlebar (29) onto The Rear U-Frame (2) with one M8x38 Hex Head Bolt (53), M8 Lock Nut (15), and two Ø20xØ8.5x1.5 Washers (13). Tighten bolts and nuts with two Wrenches provided.

Repeat above same steps to attach the other Handlebar (29) onto the Rear U-Frame (2) and Pivot Arm Ring (43).



### Hardware:



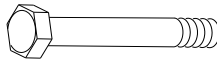
1 Hex Head Bolt (M8x23)



2 Lock Nuts (M8)

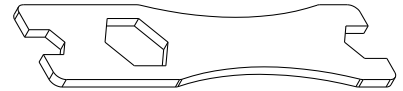


4 Washers (Ø20xØ8.5x1.5)



1 Hex Head Bolt M8x38

### Tool:



2 Wrenches M12x14

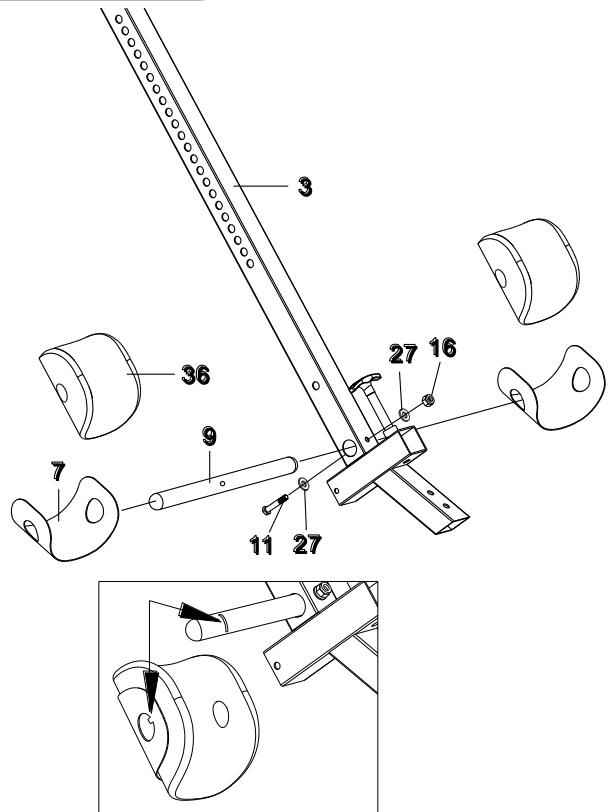
## ASSEMBLY

### Step 6

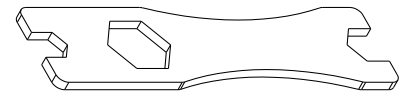
Slide the Rod (9) through the large round hole on the side of Adjustable Boom (3), and secure the Rod (9) on the Adjustable Boom (3) with one M6x47 Hex Head Bolt (11), one M6 Lock Nut (16), and two Ø16xØ6.5x1.0 Washers (27).

Slide one Steel Heel Holder Bracket (7) and one Rubber Rear Heel Holder (36) onto one end of the Rod (9) until the lock tooth is wedged into the slot in the Rod (9), as shown in detailed drawing. Use the same procedure to attach the other Steel Heel Holder Bracket (7) and Rubber Rear Heel Holder (26) onto the other end of the Rod (9).

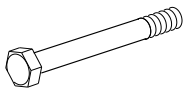
**NOTE:** Make sure the lock teeth are wedged into the slots in the Rod (9) to lock the Steel Heel Holder Brackets (7) and Rubber Rear Heel Holders (36) in place before use.



### Tool:



2 Wrenches M12x14



1 Hex Head Bolt (M6x47)



2 Washers (Ø16xØ6.5x1.0)



1 Lock Nut (M6)

## ASSEMBLY

### Step 7

Slide the Foot Bar (60) into the bottom of the Adjustable Boom (3) and align two of the holes on the Foot Bar (60) with two holes on the boom. Secure the Foot Bar (60) in place using two M8x50 Hex Head Bolts (39), two M8 Lock Nuts (15), and four Ø20xØ8.5x1.5 Washers (13).

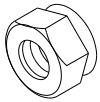
### Hardware:



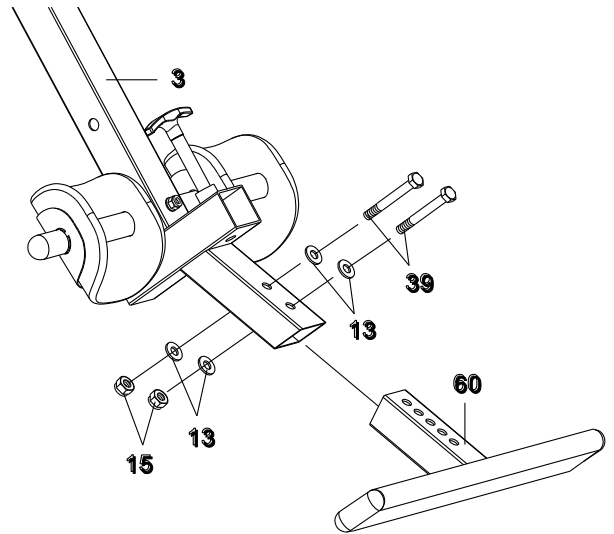
2 Hex Head Bolts (M8x50)



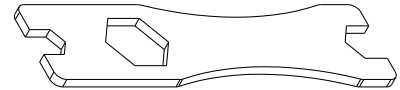
4 Washers (Ø20xØ8.5x1.5)



2 Lock Nuts (M8)



### Tool:



2 Wrenches M12x14

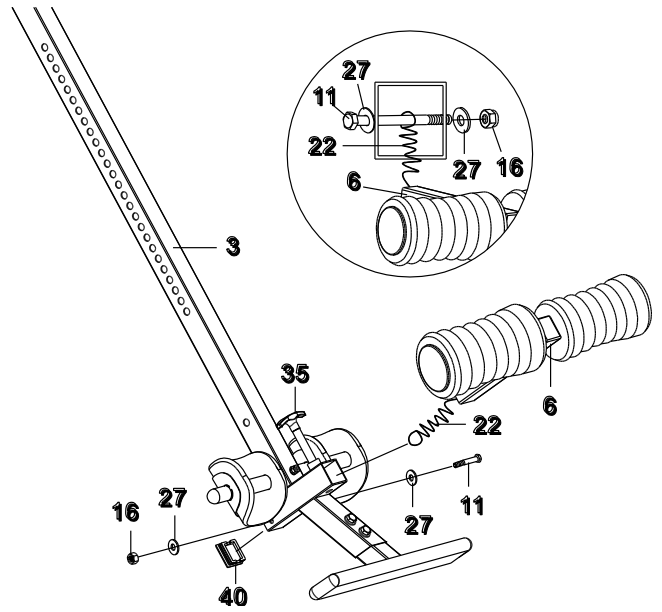


## ASSEMBLY

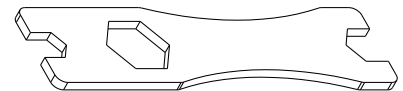
### Step 8

Remove the Square End Cap (40) on the back of square bracket of Adjustable Boom (3). Attach the Adjustable Instep Frame (6) to the Adjustable Boom (3) by inserting the Adjustable Instep Frame (6) into the square bracket on the boom. Slide the Adjustable Instep Frame (6) completely into the square bracket, insert the M6x47 Hex Head Bolt (11) with a Ø16xØ6.5x1.0 Washer (27) halfway through the square bracket, slide the M6x47 Hex Head Bolt (11) through the ring at the bottom of the Spring (22), slide the M6x47 Hex Head Bolt (11) through the rest of the square bracket, and secure at the other end with a Ø16xØ6.5x1.0 Washer (27) and M6 Lock Nut (16). Attach the Square End Cap (40) onto the back of square bracket of Adjustable Boom (3) that was removed.

**Note:** To slide the Adjustable Instep Frame (6) into the square frame, you must first pull out the "T" Type Spring Knob (35).

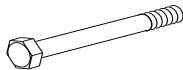


### Tool:



2 Wrenches M12x14

### Hardware:



1 Hex Head Bolt (M6x47)



2 Washers (Ø16xØ6.5x1.0)

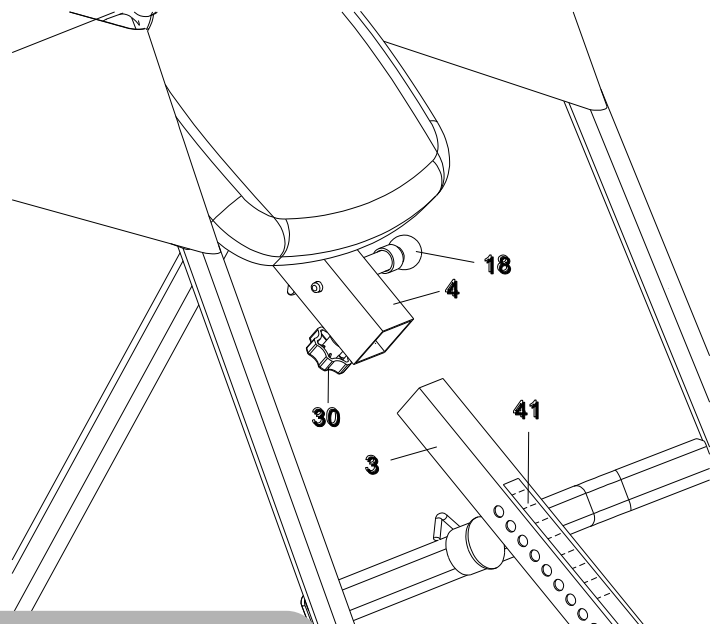


1 Lock Nut (M6)

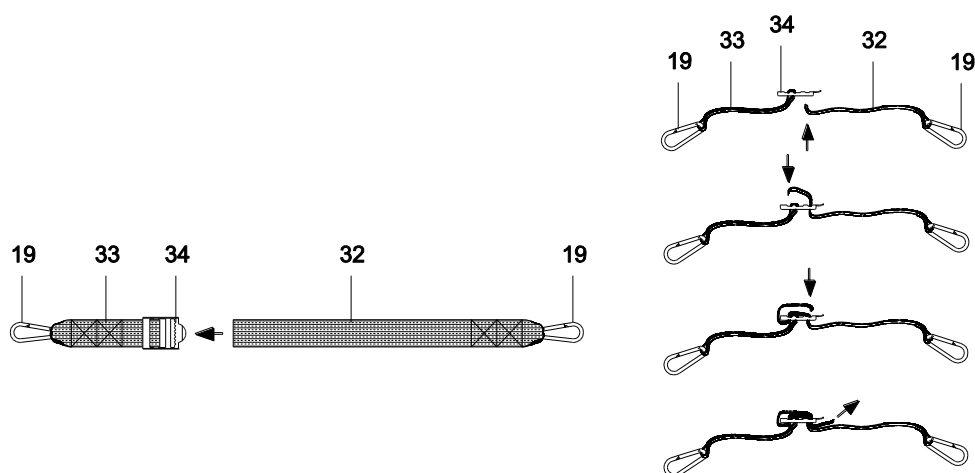
.....

### Step 9

Pull out the Ball Spring Knob (18), and slide the Adjustable Boom (3) into the square bracket on the bottom of the Bed Frame (4) as shown. Slide the boom upward, until the desired height on the Height Scale (41) is just below the bracket on the bed frame. Lock the Adjustable Boom (3) in place by releasing the Ball Spring Knob (18) and sliding the Adjustable Boom (3) up or down slightly until the Ball Spring Knob (18) "pops" down into the locked position. For added safety, secure the Knob (30) into the back side of the bracket on the Bed Frame (4) as shown.



## ASSEMBLY



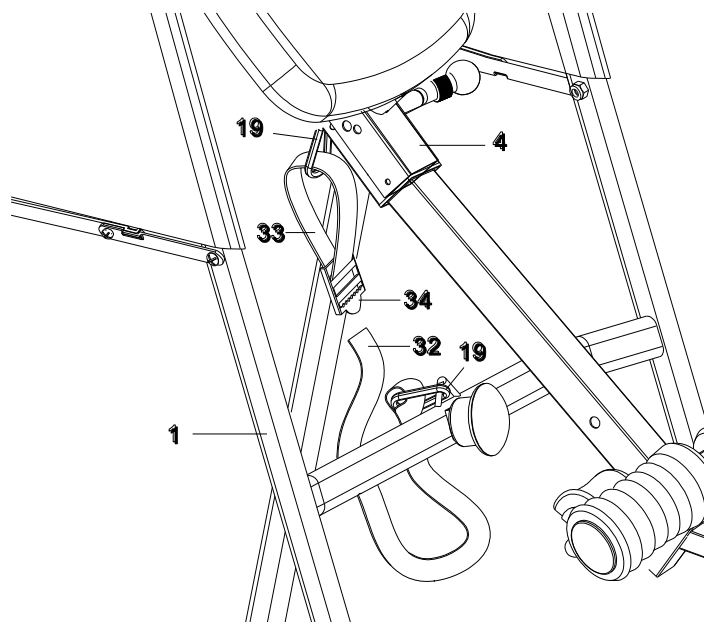
### Step 10

Attach the Nylon Strap (32) to the Strap Lock (34) by inserting the end of the strap up through the bottom of the strap lock, loop the Nylon Strap (32) over the Pre-assembled Loop Strap (33) and down through the Strap Lock (34). Now, loop the strap back over itself, and insert back through the Strap Lock (34), and pull tight to secure. See diagram.

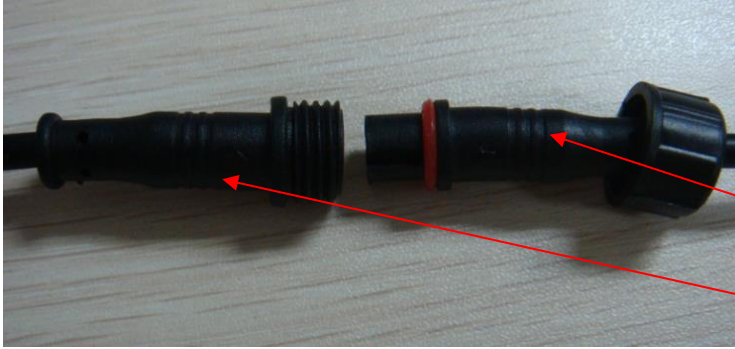
.....

### Step 11

Attach the Nylon and Loop Straps (32, 33) to the inversion table by hooking the end of the Loop Strap (33) to the pre-assembled loop on the back of the Bed Frame (4) as shown. Now hook the other end of Nylon Strap (32) to the other pre-assembled loop on the Front U-Frame (1) as shown.



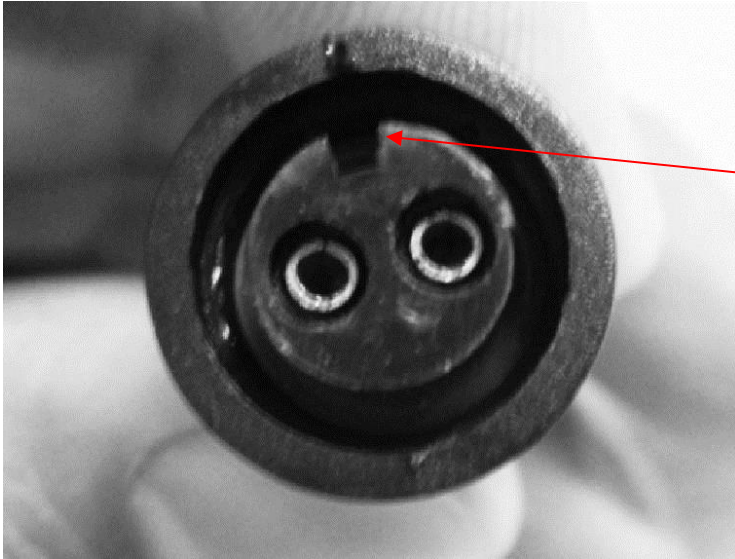
## SUPPLEMENTAL INSTRUCTION FOR CONNECTING CABLES



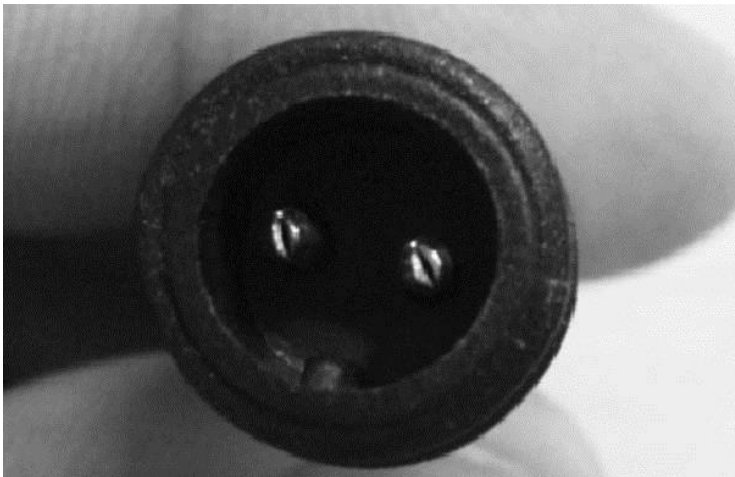
**1. Connect male plug with female plug.**

**Male side (with red ring & cap)**

**Female side**



**2. The male side of the connector has a gap here.**



**3. Make sure the gap on the male side matches the bulge on the female side.**

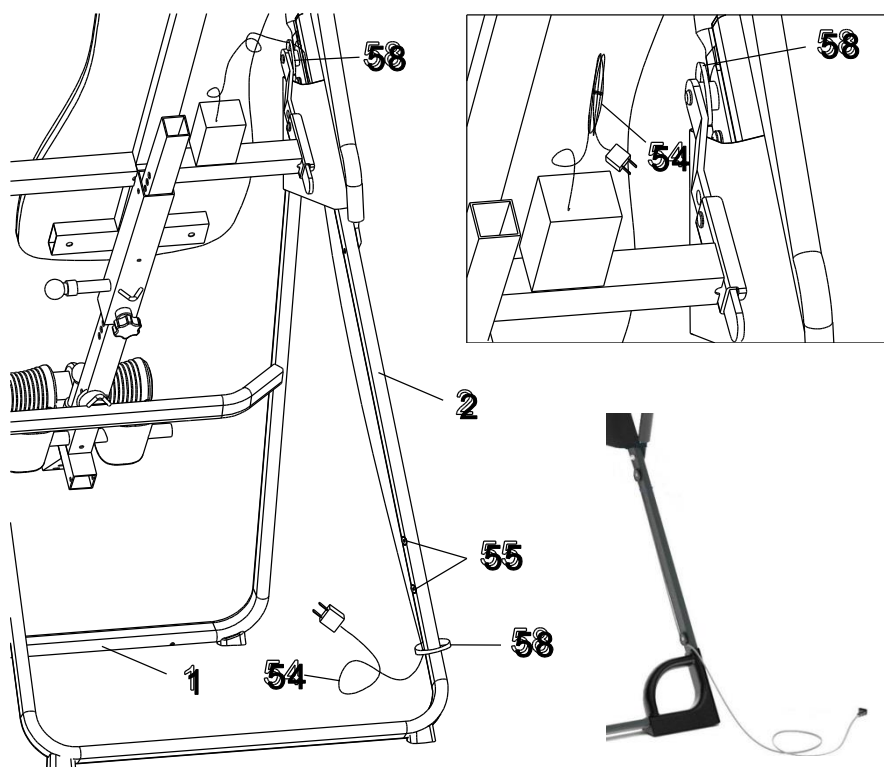


**4. Screw the gap on the male side onto the female plug.**

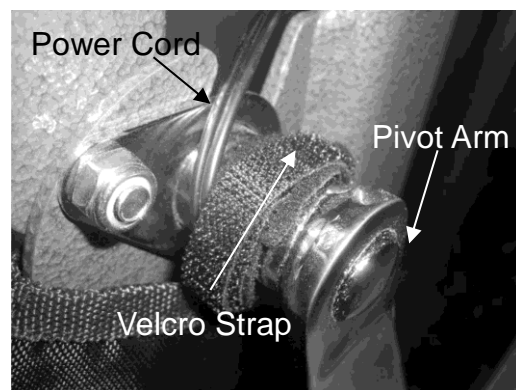
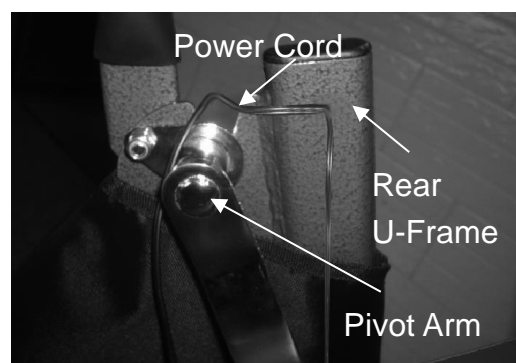
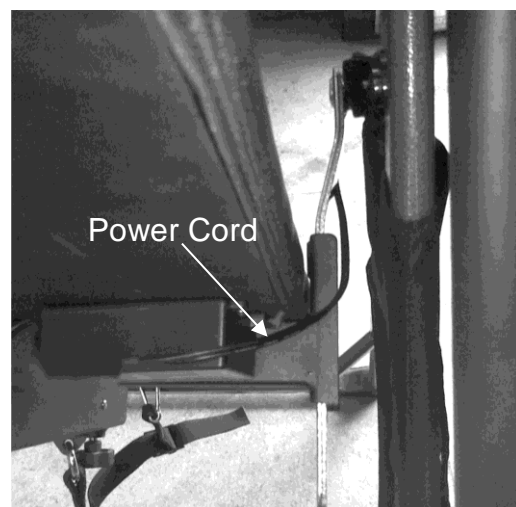
## ROUTING THE WIRE

Route the wire as illustrated, lead the Power Cord (54) through the protective cover all the way down. Use a Velcro Strap (58) to secure the Power Cord (54) to the Pivot Arm (5). Wind the wire around the Anchors (55) on the rear right frame. Slowly turn the table all the way until it becomes 180 degree, to make sure the wire is long enough and will not entangle any part of inversion table while you are using it.

Caution: Do not route the wire other than instructed herewith, or the wire may be snapped during inverting.



Route the cable through cable anchors, make sure the cable rest in the space between the frame and the anchors. For storage of cable, refer to Page 6 of this manual.



## ROUTING THE WIRE



### **Caution: Wrong Routing**

Do not route the cable from outside of the handlebar.

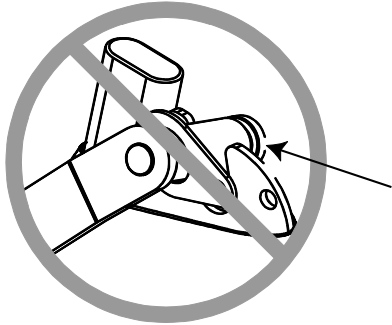


### **Caution: Wrong Routing**

The cable did not route through the axle of pivot arm first.

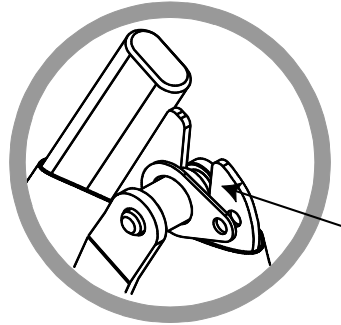
## SAFETY OPERATING INSTUCTION

### Incorrect



Pivot arm is NOT aligned correctly.  
The pivot arm is not inserted all the way into the curved slot.

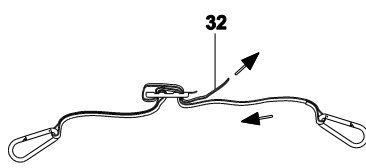
### Correct



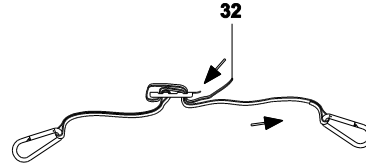
Make sure the pivot arm is inserted all the way into the slot. Pivot arm is aligned correctly when the groove sits directly on the curved slot and the pivot arm is able to rotate freely.

**WARNING: Please make sure both pivot arms are in the same hole to prevent serious injury from occurring.**

## OPERATIOIN AND ADJUSTMENTS



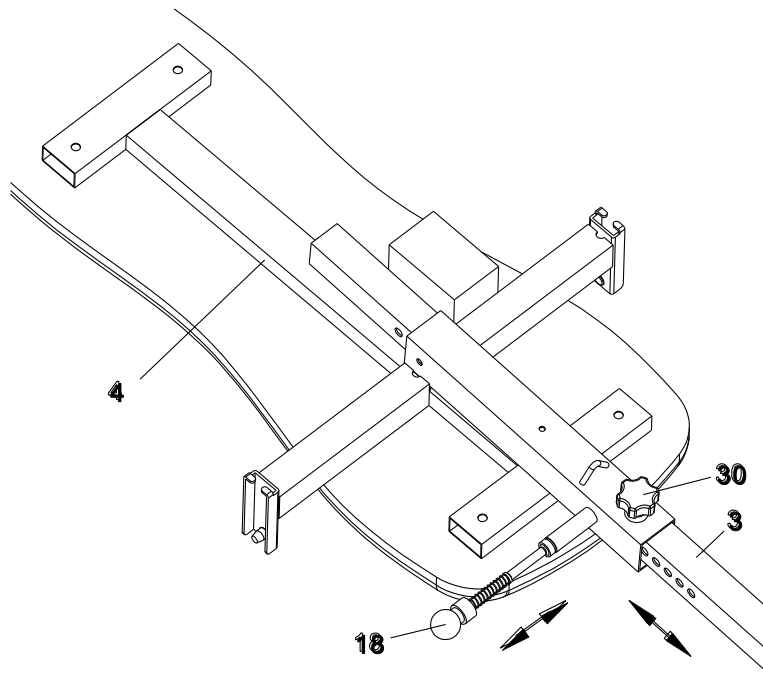
**SHORTEN**



**LENGTHEN**

### THE STRAP

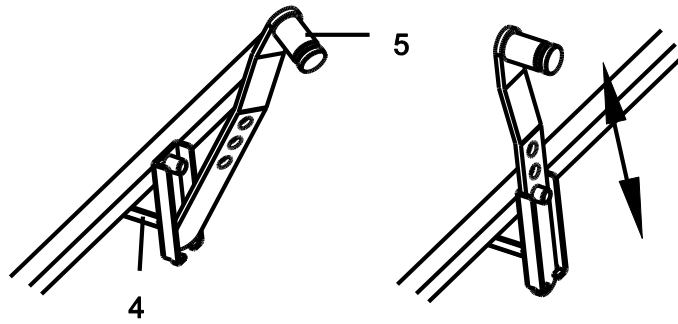
For added safety, a nylon strap has been included to restrict the degree of inversion. This strap can be adjusted to different lengths to allow for a greater or lesser degree of inversion. To lengthen the Nylon Strap (32) feed the top end of Nylon Strap (32) into the strap lock, and pull on the lower end of the strap. To shorten the length feed the bottom end of Nylon Strap (32) into the strap lock, and pull on the top end.



### ADJUSTING THE BOOM

The Adjustable Boom (3) can be moved to a variety of different positions, in order to accommodate the height of the person on the inversion table. To adjust the Adjustable Boom (3) loosen the knob (30), pull out the Ball Spring Knob (18), and slide the Adjustable Boom (3) up or down until the desired height on the height scale is positioned just below the square bushing. When the Adjustable Boom (3) is in the desired position, simply release the Ball Spring Knob (18), slide the Adjustable Boom (3) slightly up or down until the Ball Spring Knob (18) locks into place, and tighten the Knob (30).

## OPERATIOIN AND ADJUSTMENTS



### PIVOT ARMS

The Pivot Arms (5) can be adjusted to allow for a greater or lesser degree of inversion. To adjust the Pivot Arms (5) simply pull out on them until the post is out of the hole, slide them up or down to the desired hole, push in until the post goes through the desired hole. The bottom hole provides the least amount of inversion, while the top hole provides the greatest amount. It is recommended that beginners use the bottom hole until they are familiar with the inversion table.

**NOTE:** Both Pivot Arms (5) must be adjusted to the same hole. Trying to adjust the Pivot Arms (5) on two different positions could cause damage to the inversion table or injury to the user.

### THE HANDLEBARS

For added convenience and safety, a set of Handlebars (29) has been added to the inversion table. These Handlebars (29) are located at the top of the Rear U-Frame (2). The Handlebars (29) are there to help you return to the upright position from any degree of inversion. If you wish to return to the upright position, and the bed is moving too slowly, or not moving at all, simply grab the Handlebars (29) and pull on them until you return to the upright position.

**NOTE:** The inversion table should always return to the upright position when you move your hands below your waist. If it does not, the inversion table is probably not adjusted correctly to your height.

\* Always hold on to the handlebars and go back slowly. Failure to comply could result in serious physical injury.



## OPERATION AND ADJUSTMENTS

### GENERAL PRECAUTIONS

1. Make sure that the Pivot Arms (5) are locks on the lowest hole for the first few attempts.
2. It is recommended that someone be with you while you are using this inversion table for the first few times.
3. Make sure that the Front and Rubber Rear Heel Holders (31, 36) are holding your feet securely.
4. Make sure that the Adjustable Boom (3) is properly set to your height.
5. Make sure that the Adjustable Boom (3) is held securely by both the Ball Spring Knob (18) and the Knob (30).
6. Make sure that there is enough room for the bed to rotate completely.

### BALANCING THE INVERSION TABLE

The inversion table is like a very sensitively balanced fulcrum. It responds to very slight changes in weight distribution. So, it is very important to make sure that the height is adjusted properly. To do this, mount the inversion table, lock your ankles into the heel holders, and lie back with your hands at your sides. Slowly place your hands across your chest. While in this position, your head should still be above your feet. If your feet are above your head, dismount and adjust the height again.

### USING THE INVERSION TABLE

1. Start by lying fully back on the bed with your hands at your side, or resting on your thighs.
2. Keeping your hands close to your body begin to raise your arms slowly allowing the table to rotate backward. Stop, or lower your arms to control the downward rotation of the table.
3. Raise your arms until they are over your head. At this point, the inversion table will be as far back as it can go.
4. As you get more comfortable with the use, rock the bed slowly by moving your arms up and down slowly.
5. It is recommended that the inversion table be used for five or ten minutes each morning, and again each evening.
6. Return to the upright position by slowly moving your hands back down to your thighs.



## OPERATION AND ADJUSTMENTS

### SUGGESTIONS FOR USE

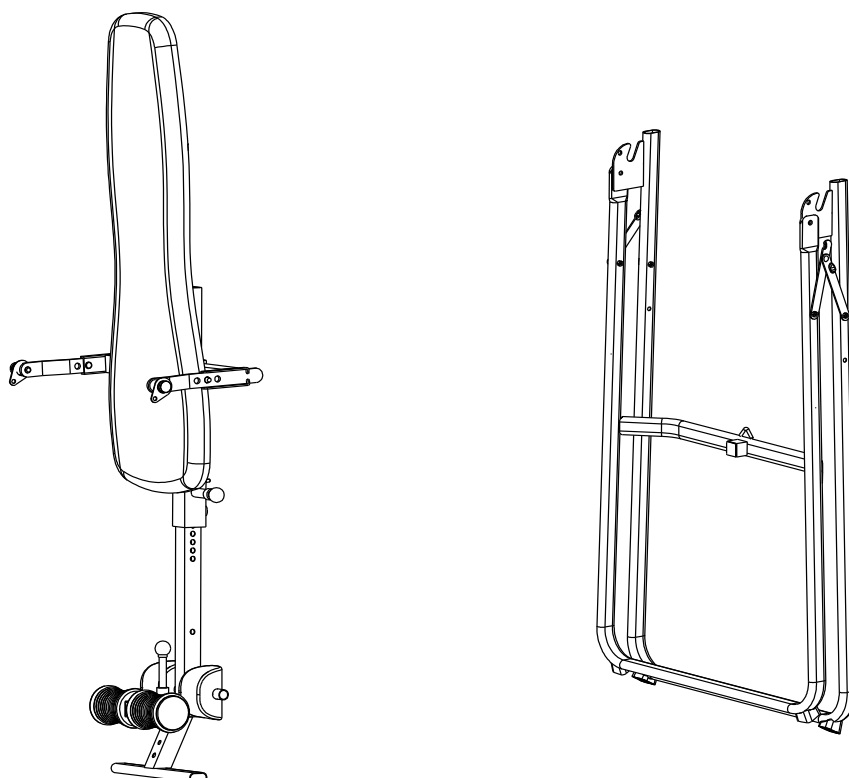
1. Begin slowly: invert only 15~20 degrees to begin with. Stay inverted only as long as you are comfortable. Return upright slowly.
2. Make gradual changes: increase the angle only if it is comfortable. Increase angle only a few degrees at a time. Increase the time of use 1~2 minutes up to ten over a period of weeks. Add stretching and light exercise only after you are comfortable with inversion.
3. Watch your body: come up slowly, dizziness after a session means you came up too fast. Wait a while after eating before using table. If you get nauseous, do not fight it, come up as soon as you feel queasy.
4. Keep moving: movement while inverted encourages blood, circulation. Movement may be accomplished by either rhythmic traction or light exercise. Do not exercise strenuously while inverted, limit partial inversion without movement to one or two minutes. Limit full inversion with no movement to only a few seconds.
5. Invert regularly: we recommend two or three times a day depending upon your current condition. Try to schedule it for the same time each day.

## MAINTENANCE INSTRUCTIONS

You should check your inversion table for any kind of wear and tear before each use.

1. Check the pivot arms, bed, heel holders for wear and tear.
2. Replace damaged and worn components immediately.
3. Keep all damaged equipment out of use until it is repaired.

## STORAGE



### FOLDING THE INVERSION TABLE

For your storage convenience, the inversion table can be folded down to place against a wall, under a bed, or in a storage area. To fold the inversion table pull out the Ball Spring Knob (18) and loosen Knob (30). Now, slide the Adjustable Boom (3) all the way up into the frame, until the instep frame is just below the Bed Frame (4), release the Ball Spring Knob (18) and slide the Adjustable Boom (3) slightly up or down until the Ball Spring Knob (18) locks the Adjustable Boom (3) in place. Remove the Bed Frame (4) from the base by lifting up on the Bed Frame (4) until the Pivot Arms (5) come out of the arm slots located at the top of the Rear U-Frame (2), (Make sure the Strap is not attached to the Bed Frame before attempting to remove it.) Push up on the center of the Folding Arms (8) and push the Front and Rear U-Frames (1, 2) together until they meet. Now the inversion table is ready to be stored, allowing you to unfold it quickly and easily whenever you want to use it.

## ABOUT TEMPERATURE

1. The temperature readout is based on the sensor built-in with the Fiber Glass Infrared heater mat inside. It does not represent the temperature of the cushion surface.
2. Put a towel or cloth on top of the cushion will help increase the temperature even faster.
3. After the 15-20 minutes preheat time, get on the inversion table and lay your back on the heat cushion, the temperature will continue to increase.

## REMOTE CONTROL & CONTROLLER OPERATION

1. By default setting, when turned on, the temperature is set to 140 degrees F (60 degrees C), and timer is set to 40 minutes. This will ensure the far infrared foam bed heats up as quickly as possible. Adjust the temperature down to your desire setting after preheat. Set Low Heat at 100-110, Medium Heat at 120-130, or High Heat at 130-140 degrees F.
2. The normal preheat time is 15-20 minutes, under room temperature at 68-77degrees F (20-25 degrees C).
3. Both Remote Control and Controller can be used to set desired temperature and time.
4. The LED on the Controller reads out the current temperature and remaining time.
5. The Remote Control will function either aiming directly to the Controller or to the wall/ceiling in the room when using the table.
6. The Remote Control comes with a Velcro strap. Pull apart to open the Velcro strap for two layers. Remove the liner away from the short layer, choose adhesive backing for bonding to the back of the Remote Control. Remove the liner away from the long layer, choose adhesive backing for bonding to the inversion table where it is easy reach by hand, such as Front U-Frame. Attach the Remote Control to it when not in use. Or simply drop it into the mesh pocket of the right side cover for storage.

### Precautions

Plug must be plugged into an appropriate outlet that is properly installed. Improper connection can result in the risk of electric hazard.

A typical indoor extension cord may used to reach a desired electrical outlet.

Set the temperature and time to a comfortable level.

### Far Infrared Foam Bed Operation

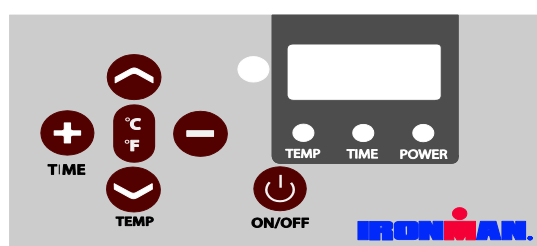
Plug the unit into the outlet with the “**POWER**” light off before starting it and use the **ON/OFF** switch to turn on the cushion. After starting the unit, the digital light of temperature displays the set temperature as 140 degrees F (60 degrees C). The temperature can be changed by pressing the “**^**” or “**v**” button to increase or decrease the temperature. The digital light of time displays the set time is 59 minutes. Timer can be changed by pressing the “**+**” or “**-**” button to increase or decrease time. After 5 seconds, the digital light in temperature flashes 2 times and then returns to display the current temperature of far infrared foam bed. When pressing the button “**^**” or “**v**” again, it will change to display the “set temperature” and can be set to desired temperature.

Press the °C/°F button to switch the display between Centigrade and Fahrenheit.

Buzzer will beep when time counts down to 0. After using the unit, turn off the **ON/OFF** switch, and unplug the power cable.



REMOTE CONTROL



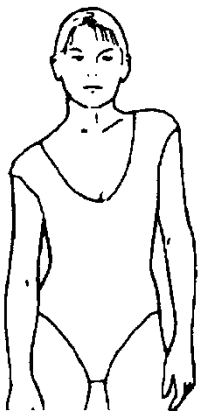
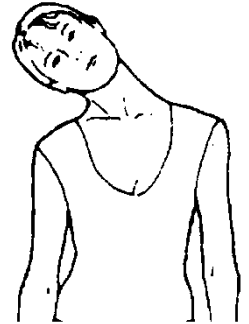
CONTROLLER PANEL

## WARM UP

The **WARM-UP** is an important part of any workout. It should begin every session to prepare your body for more strenuous exercise by heating up and stretching your muscles, increasing your circulation and pulse rate, and delivering more oxygen to your muscles.

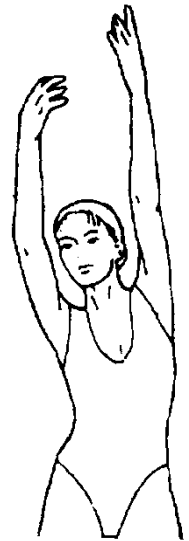
### HEAD ROLLS

Rotate your head to the right for one count, feeling the stretch up the left side of your neck, then rotate your head back for one count, stretching your chin to the ceiling and letting your mouth open. Rotate your head to the left for one count, then drop your head to your chest for one count.



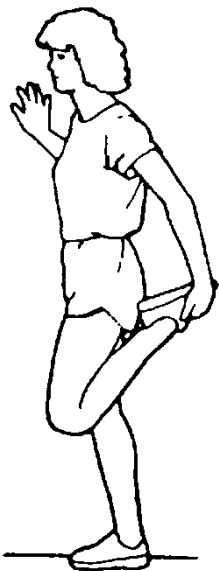
### SHOULDER LIFTS

Lift your right shoulder toward your ear for one count. Then lift your left shoulder up for one count as you lower your right shoulder.



### SIDE STRETCHES

Open your arms to the side and lift them until they are over your head. Reach your right arm as far toward the ceiling as you can for one count. Repeat this action with your left arm.



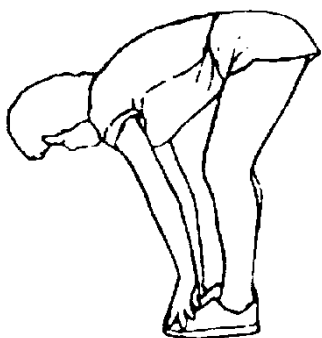
### QUADRICEPS STRETCH

With one hand against a wall for balance, reach behind you and pull your right foot up. Bring your heel as close to your buttocks as possible. Hold for 15 counts and repeat with left foot.

## WARM UP

### INNER THIGH STRETCH

Sit with the soles of your feet together and your knees pointing outward. Pull your feet as close to your groin as possible. Gently push your knees toward the floor. Hold for 15 counts.

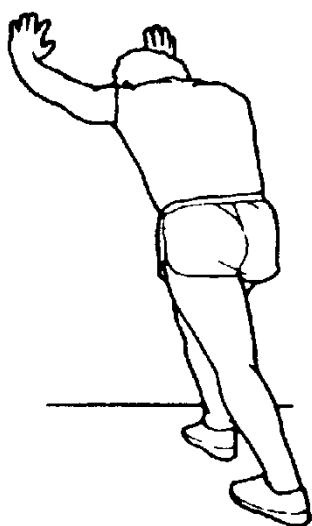
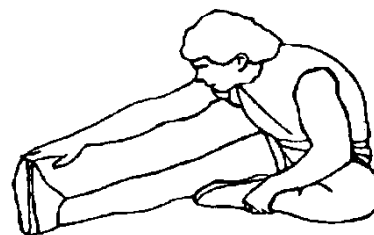


### TOE TOUCHES

Slowly bend forward from your waist, letting your back and shoulders relax as you stretch toward your toes. Reach as far as you can and hold for 15 counts.

### HAMSTRING STRETCHES

Extend your right leg. Rest the sole of your left foot against your right inner thigh. Stretch toward your toe as far as possible. Hold for 15 counts. Relax and then repeat with



### CALF/ACHILLES STRETCH

Lean against a wall with your left leg in front of the right and your arms forward. Keep your right leg straight and the left foot on the floor; then bend the left leg and lean forward by moving your hips toward the wall. Hold, then repeat on the other side for 15

## WARRANTY

### MANUFACTURER'S LIMITED WARRANTY

Paradigm Health & Wellness warrants to the original purchaser that this product is free from defects in material and workmanship when used for the purpose intended, under the conditions that it has been installed and operated in accordance with Paradigm's Owner's Manual. Paradigm's obligation under this warranty applies to the following:

<u>COMPONENT</u>	<u>LENGTH OF WARRANTY</u>
------------------	---------------------------

Structural Frame	1 year
------------------	--------

All Other Components	90 days
----------------------	---------

(computer display, electronics, upholstery, foam, ball bearings, pulleys, belts, cables, wires, shocks, covers, tension, internal mechanism, wheels, pedals, knobs, accessories and hardware)

#### **Exclusions from Warranty Coverage:**

Paradigm does not warrant against and is not responsible for, and no implied warranty shall be deemed to cover, any product failure, product malfunction, or damages attributable to:

1. Improper installation and/or failure to abide by Paradigm's installation guidelines;
2. Use of this product beyond normal home use, or in an application for which it was not designed;
3. Cosmetic items such as scratches, dents or discolorations;
4. Damage caused by normal wear and tear, vandalism, accidental or by animals;
5. Any act of Nature (such as fire, flooding, snow, ice, hurricane, earthquake, lightning or other natural disaster), environmental condition (such as air pollution, mold, mildew, etc.), or staining from foreign substances (such as dirt, grease, oil, etc.);
6. Normal weathering due to exposure to sunlight, weather and atmosphere which can cause colored surfaces to, among other things, flake, chalk, accumulate dirt or stains.
7. Improper operation, alteration, handling, storage, abuse or neglect of the products.

Paradigm, using its sole discretion, will either repair or replace free of charge any part(s) proven to be defective under normal home use. Any repair or replacement shall provide no new warranty coverage, but shall retain only the remaining portion of the original product's warranty. This warranty is offered only to the original purchaser and is not transferable. Proof of original purchase is required.

#### Ordering Replacement Parts

Replacement parts can be ordered by emailing our customer service department:

**Service@paradigmhw.com**

Open Daily 8:00 AM - 5:00 PM (PST).

When ordering replacement parts please have the following information ready:

1. Owner's Manual
2. Model Number
3. Description of Parts
4. Part Number
5. Date of Purchase

## PART REQUEST FORM

### Paradigm Health & Wellness, Inc.

EMAIL THIS FORM WITH YOUR RECEIPT OF PURCHASE TO

[Service@paradigmhw.com](mailto:Service@paradigmhw.com) \*

NAME: \_\_\_\_\_

ADDRESS: \_\_\_\_\_

CITY \_\_\_\_\_ STATE \_\_\_\_\_ ZIP \_\_\_\_\_

TELEPHONE: (Day) \_\_\_\_\_

(Night) \_\_\_\_\_

SERIAL#: \_\_\_\_\_

MODEL#: \_\_\_\_\_

PURCHASE DATE: \_\_\_\_\_

PLACE OF PURCHASE: \_\_\_\_\_

PART #	DESCRIPTION	QTY

**"YOUR ORDER WILL BE PROCESSED WITHIN 3 BUSINESS DAYS"**

\* This form can also be faxed in Fax #: 626-810-2166