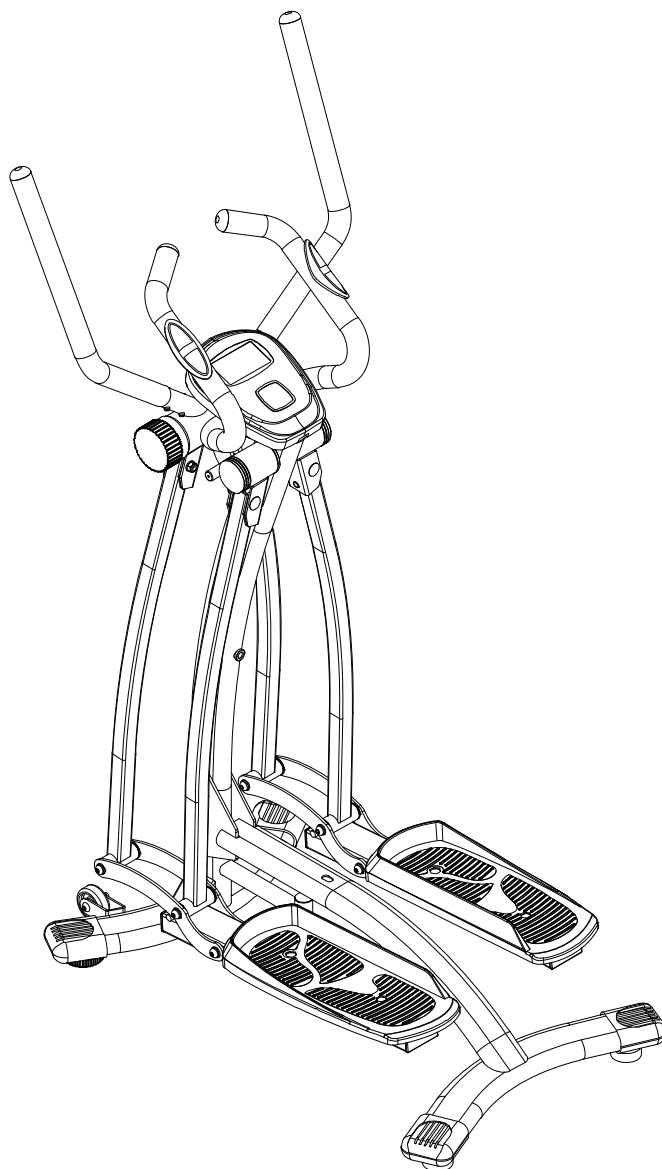


AIR WALKER



IMPORTANT: Read all instructions carefully before using this product.
Retain this owner's manual for future reference.
The specifications of this product may vary from this photo and, subject to change without notice.

TABLE OF CONTENTS

| | |
|------------------------------------|----|
| SERVICE | 2 |
| LABEL PLACEMENT..... | 3 |
| IMPORTANT SAFETY INSTRUCTIONS..... | 4 |
| OVERVIEW DRAWING..... | 5 |
| PART LIST..... | 6 |
| ASSEMBLY..... | 7 |
| STORAGE..... | 9 |
| MOVING THE AIR WALKER..... | 10 |
| COMPUTER..... | 11 |
| WARRANTY..... | 12 |
| PART REQUEST FORM..... | 13 |

SERVICE

IMPORTANT: FOR NORTH AMERICA ONLY

For damaged, defective products, questions, replacement parts, or any other service support, please contact our customer service department (8:00 AM - 5:00 PM Pacific Standard Time, Daily) by the below methods:

For Best Service, please Email:

Service@paradigmhw.com

Response Time: 1-2 Business Days

Website:

www.paradigmhw.com

Toll-Free:

1-844-641-7920

Response time may vary.

Please have the following information ready when requesting for service:

Your name

Phone number

Model number

Serial number

Part number

Proof of Purchase

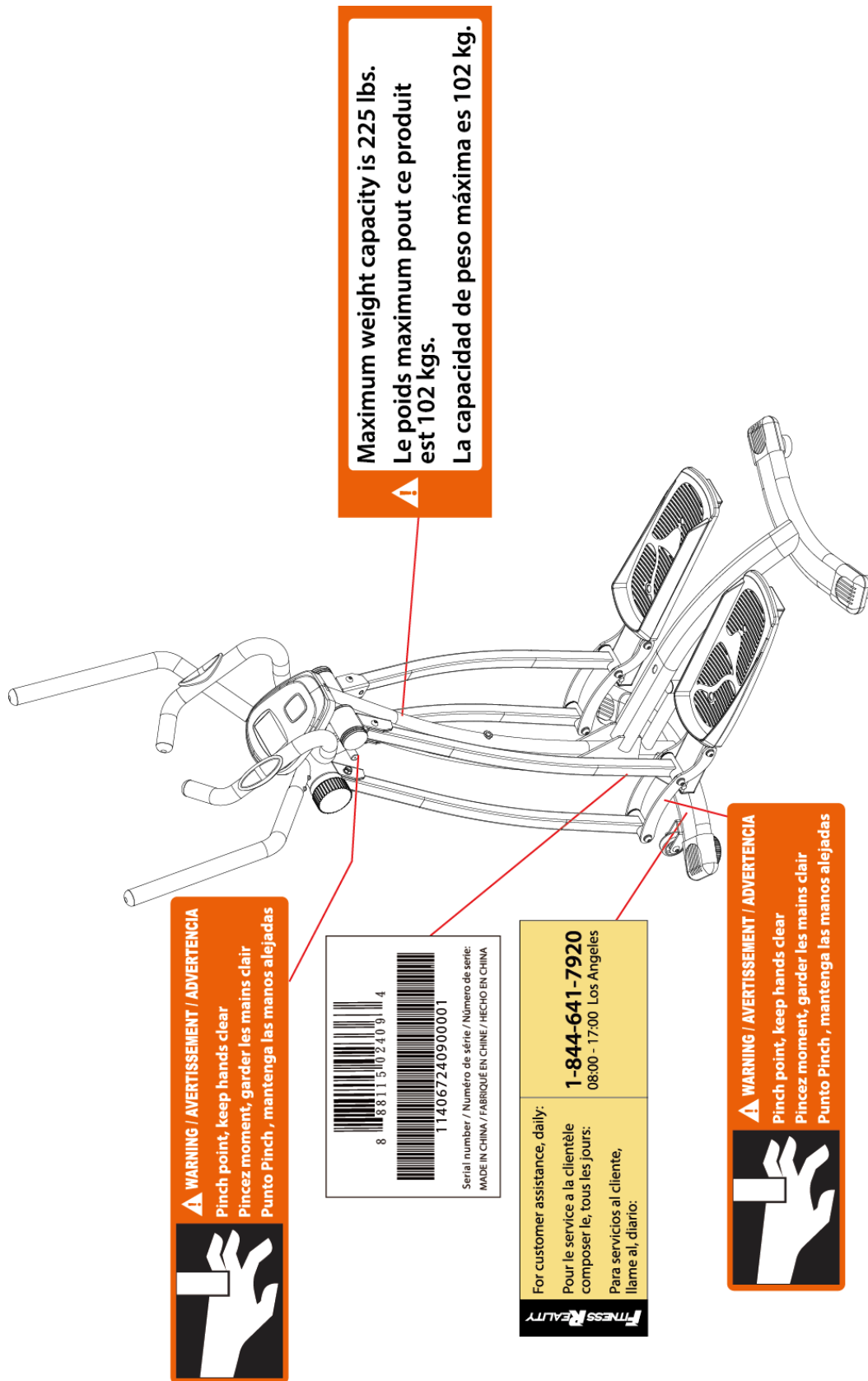
For damaged or defective products please contact our customer service before returning to the store.

Paradigm Health & Wellness, Inc.

1189 Jellick Ave.

City of Industry, CA 91748, USA

LABEL PLACEMENT



IMPORTANT SAFETY INSTRUCTIONS

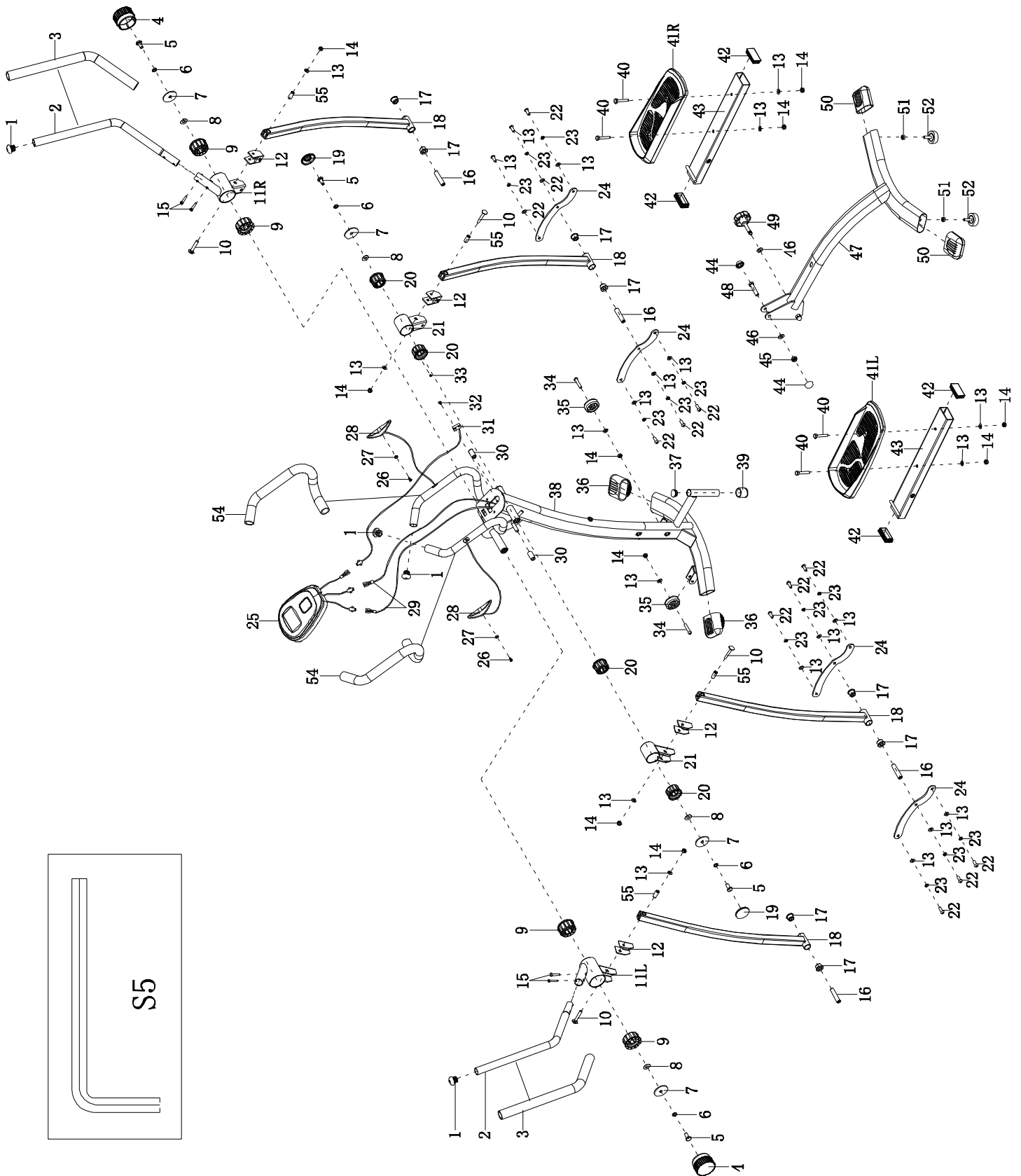
Basic precautions should always be followed, including the following safety instructions when using this equipment. Read all the instructions before using this equipment.

1. Before exercising and to avoid injuring your muscles, it is highly recommended that you perform warm-up exercises for each muscle group.
2. Please make sure all the components are undamaged and are in working order before using. This equipment should be placed on a stable, flat surface. Using a mat or similar material on the ground underneath the equipment is recommended.
3. Please wear proper clothes and shoes when using this equipment. Do not wear loose clothing that may get caught by any part of the equipment.
4. Only perform maintenance or adjustments that are instructed in this manual. Should any problems arise, discontinue use and consult with customer service at Paradigm.
5. **Be careful when stepping on or stepping off of the pedals.** Always hold onto the stationary handlebars while stepping on or off of the Air Walker. Always step on and off from the rear, never from the sides.
6. Keep dry - do not operate in wet or moist conditions.
7. Do not use the equipment outdoors.
8. This equipment is for household use only.
9. Only one person should be on the equipment at a time.
10. Keep children and pets away from the product at all times.
11. This machine is designed for adults only.
12. This product requires a minimum of 6 square feet of space for safe operation.
13. If you feel any chest pains, nausea, dizziness, or shortness of breath, you should stop exercising immediately and consult with your physician before continuing.
14. **The maximum weight capacity for this product is 225 lbs / 102 kgs.**

WARNING: Before beginning any exercise program consult with your physician. This is especially important for the people who are over 35 years old or who have pre-existing health problems.

CAUTION: Read all instructions carefully before operating this product. Retain this Owner's Manual for future reference.

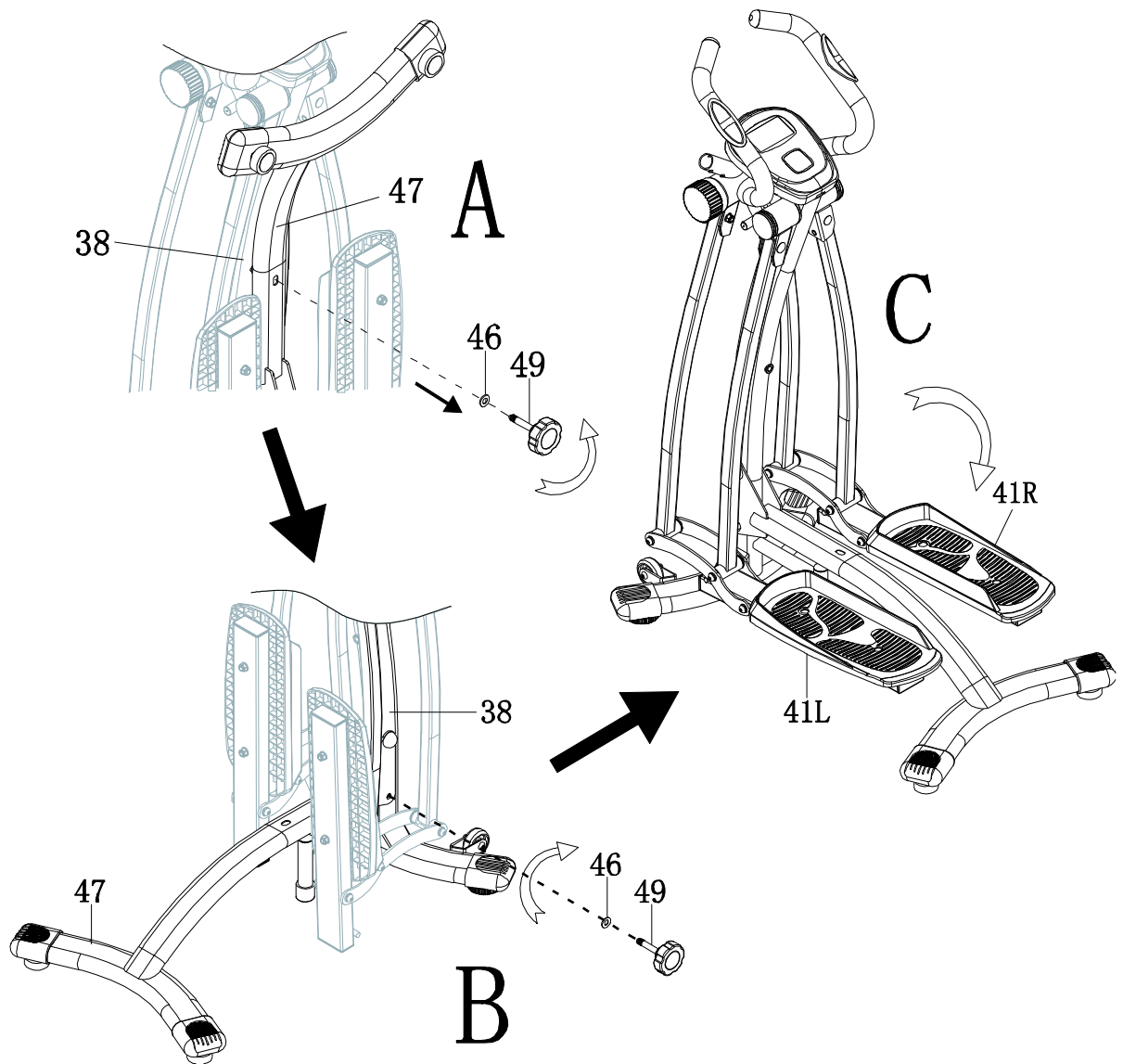
OVERVIEW DRAWING



PART LIST

| No. | Description | Qty | No. | Description | Qty |
|-------|---|-----|-------|---|-----|
| 1 | Round Cap $\phi 31 \times 26$ | 4 | 29 | Hand Pulse Sensor Wire | 2 |
| 2 | Handlebar | 2 | 30 | Bushing $\phi 15 \times 30$ | 2 |
| 3 | Foam $\phi 23 \times 3 \times 480$ | 2 | 31 | Sensor | 1 |
| 4 | Round Cap $\phi 69 \times \phi 50$ | 2 | 32 | Phillips Pan Head Screw ST4.8*13* $\phi 8$ | 1 |
| 5 | Hex Bolt M10*25*S17 | 4 | 33 | Round Magnet $\phi 6 \times 5$ | 1 |
| 6 | Spring Washer d10 | 4 | 34 | Hex Socket Head Screw M8*38*15*S6 | 2 |
| 7 | Washer d10.2* $\phi 50 \times 3$ | 4 | 35 | Round Wheel $\phi 50 \times \phi 8 \times 19.2$ | 2 |
| 8 | Washer d10.2* $\phi 24.5 \times 0.3$ | 4 | 36 | Oval Cap 77*79*48.5 | 2 |
| 9 | Bushing $\phi 60 \times 29$ | 4 | 37 | Round Cap $\phi 25 \times 16$ | 1 |
| 10 | Carriage Bolt M8*47*9*H3 | 4 | 38 | Main Frame | 1 |
| 11L/R | Handlebar Bracket | 2 | 39 | Bushing $\phi 32 \times \phi 25 \times 28$ | 1 |
| 12 | U Bracket 55*35*31.5 | 4 | 40 | Socket Hex Bolt M8*45*20*S14 | 4 |
| 13 | Washer d8* $\phi 16 \times 1.5$ | 22 | 41L/R | Right/Left Pedal | 2 |
| 14 | Nylon Nut M8*H7.5*S13 | 10 | 42 | Square Cap J60*30*15 | 4 |
| 15 | Hex Socket Head Screw M6*27*15*S5 | 4 | 43 | Pedal Tube | 2 |
| 16 | Bushing $\phi 13 \times 60.4 \times M8 \times 20$ | 4 | 44 | Cap | 2 |
| 17 | Cap $\phi 25 \times 2.65 \times \phi 21.5 \times 12.35 \times \phi 13.1$ | 8 | 45 | Nylon Nut M10*H9.5*S17 | 1 |
| 18 | Swing Post | 4 | 46 | Washer d10* $\phi 20 \times 2$ | 2 |
| 19 | Cap $\phi 50 \times 15 \times S17$ | 2 | 47 | Rear Stabilizer | 1 |
| 20 | Bushing $\phi 50 \times 29$ | 4 | 48 | Hex Bolt M10*50*13*S17 | 1 |
| 21 | Bracket | 2 | 49 | Round Knob M10*53*14* $\phi 58$ | 1 |
| 22 | Hex Socket Pan Head Screw M8*20*13*S6 | 12 | 50 | Oval Cap 77*74*37 | 2 |
| 23 | Spring Washer d8 | 12 | 51 | Hex Nut M8*H5.5*S14 | 2 |
| 24 | S Bracket | 4 | 52 | Leveler $\phi 43 \times 14 \times M8 \times 25$ | 2 |
| 25 | Console | 1 | 53 | Allen Wrench S5 | 1 |
| 26 | Phillips Head Screw ST4*19* $\phi 7$ | 2 | 54 | Foam $\phi 23 \times 3 \times 460$ | 2 |
| 27 | Washer d6* $\phi 12 \times 1$ | 2 | 55 | Bushing $\phi 11.9 \times \phi 8 \times 25.4$ | 4 |
| 28 | Hand Pulse Sensors | 2 | | | |

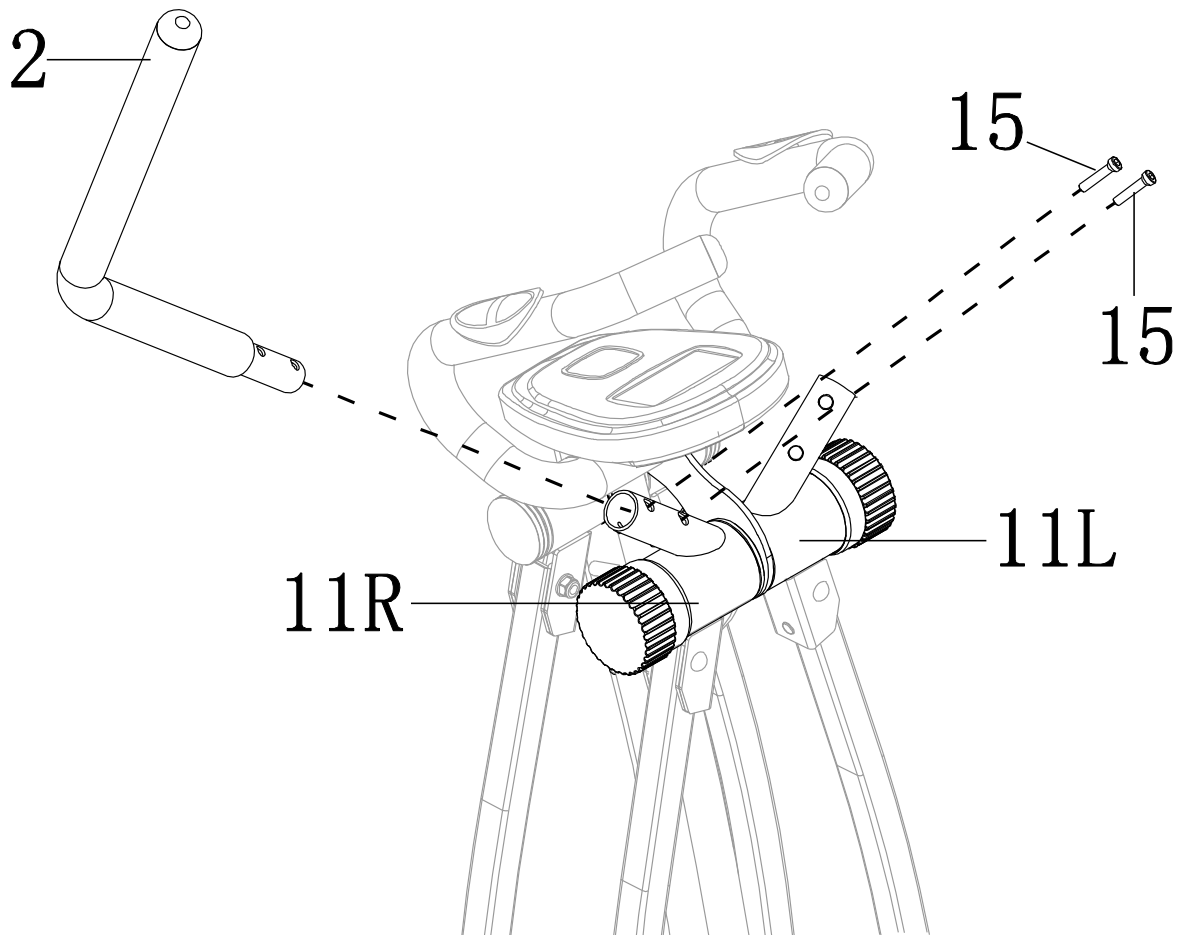
ASSEMBLY



Step 1 Setting up the Air Walker:

- Remove the Round Knob (49) and Washer (46) from the Rear Stabilizer (47) by turning it in a counter-clockwise direction as shown in Fig. (A).
- Place the Rear Stabilizer (47) flat on the ground. On the lower right side of the Main Frame (38), Insert the Round Knob (49) with Washer (46) and turn it in a clockwise direction to lock the Main Frame (38) and the Rear Stabilizer (47) together as shown in Fig. (B).
- Lower the Left & Right Pedals (41L & 41R) as shown in Fig. (C).

ASSEMBLY



Step 2 Handlebar Installation:

Remove the Hex Socket Head Screws (15) from the Handlebar Bracket (11R). Insert the Handlebar (2) into the Handlebar Bracket (11R) and align the screw holes. Tighten the Hex Socket Head Screws (15) with the 5mm Allen Wrench (53) provided to secure the Handlebar (2).

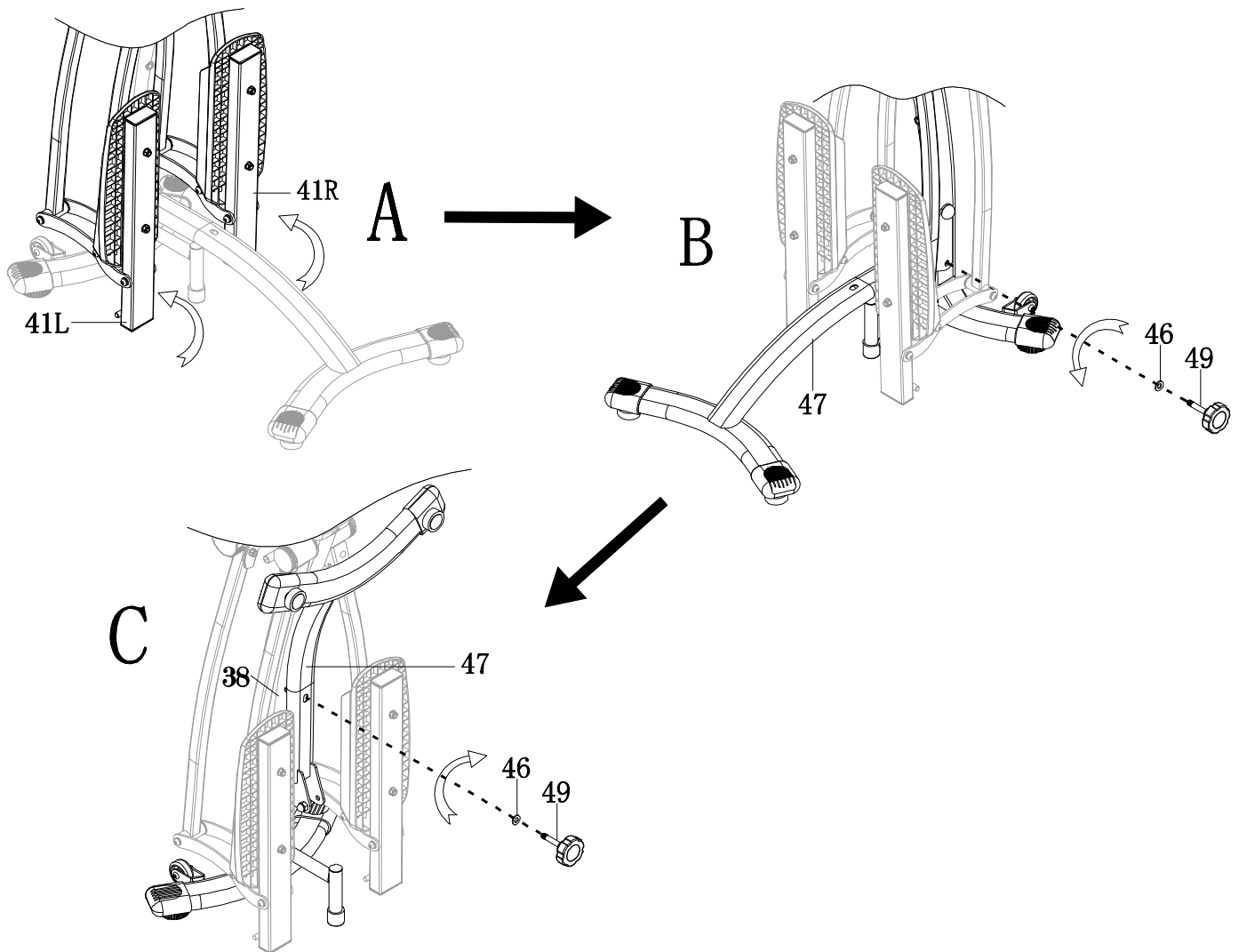
Repeat this step to install the second Handlebar (2) on to the Left Handlebar Bracket (11L).

Tool:



(53) Allen Wrench 5mm

STORAGE



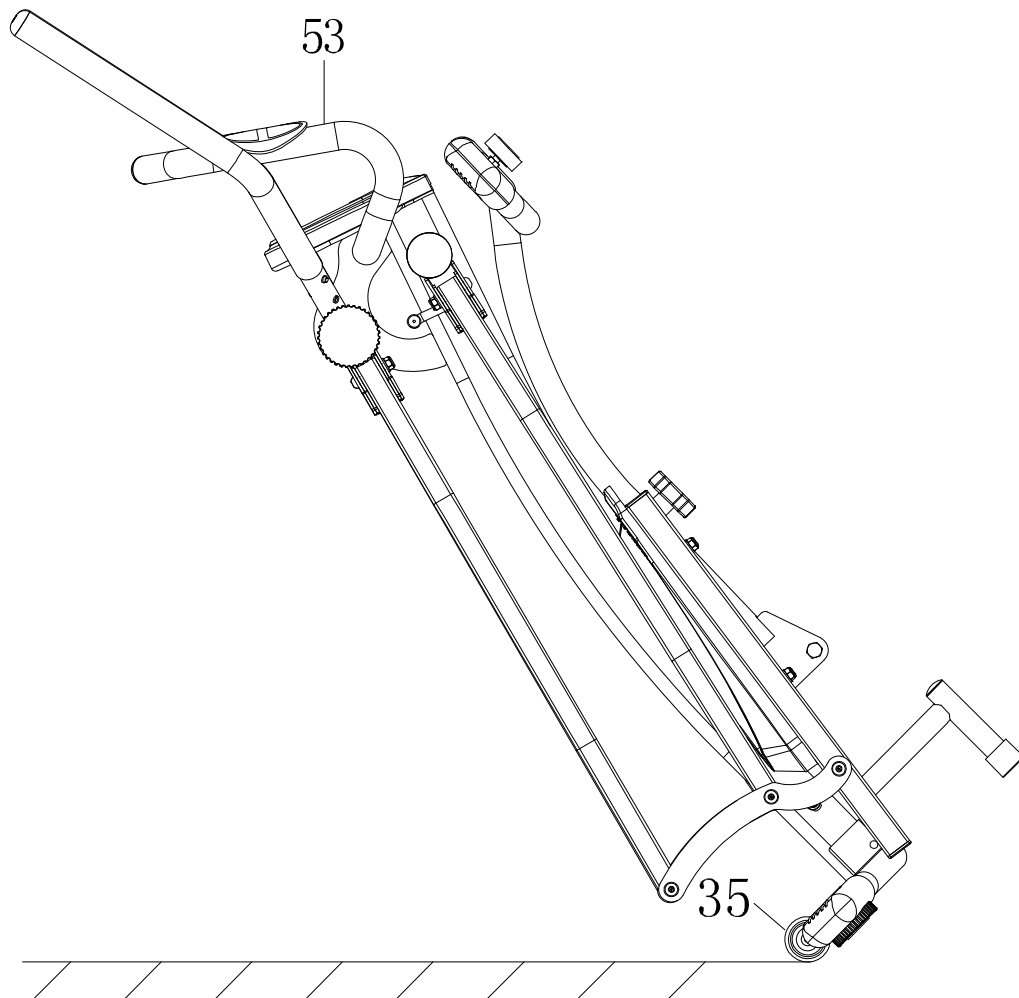
For your convenience, the walker can be folded for storage.

A. Fold the Left & Right Pedals (41L & 41R) See Fig A.

B. Remove Round Knob (49) and Washer (46) from the side of Main Frame (38). See Fig B.

C. Fold and secure the Rear Stabilizer (47) against the Main Frame (38) with the Round Knob (49) and Washer (46).

MOVING THE AIR WALKER



To move the Air Walker, Hold down the Handlebars (53) and tilt onto the Round Wheels (35). Beware: the Swing Posts (18) will move while transporting.

COMPUTER

SPECIFICATIONS:

- SCAN----- The Console will scan through and display each function every 6 seconds.
- TIME----- Displays elapsed time 0:00~99:59
- COUNT----- Displays step count; Every two steps Is displayed as 1 Count. 0~9999
- CALORIES----- Displays calories burned 0~9999
- PULSE----- Displays user pulse 30~240 BPM



OPERATION:

| | |
|-------------|--|
| SCAN | Press MODE until SCAN appears on the screen; the Console will display each function every 6 seconds. |
| TIME | Press MODE until TIME appears on the screen; the Console will display your current workout time. |
| COUNT | Press MODE until COUNT appears on the screen; the Console will display your current step count. |
| CALORIES | Press MODE until CAL appears on the screen; the Console will display the total accumulated calories burned during workout. |
| RESET | Press and hold the MODE key for 2 seconds, all values will reset to zero. |
| PULSE | While grasping both Hand Pulse Sensors, The Console will display the user's Pulse. |
| AUTO ON/OFF | After 4 minutes of inactivity, The Console will automatically shut off. The Console will automatically turn on when activity begins. |

MODE: Press this to choose one of the functions in the following order:
SCAN TIME → TIME → COUNT → CALORIES → PULSE → SCAN TIME.

NOTE

1. Two batteries are required for this Console. SIZE AA (1.5V)
2. Keep away from moist and damp areas.

WARRANTY

MANUFACTURER'S LIMITED WARRANTY

Paradigm Health & Wellness warrants to the original purchaser that this product is free from defects in material and workmanship when used for the purpose intended, under the conditions that it has been installed and operated in accordance with Paradigm's Owner's Manual. Paradigm's obligation under this warranty applies to the following:

| COMPONENT | LENGTH OF WARRANTY |
|----------------------|---------------------------|
| Structural Frame | 1 year |
| All Other Components | 90 days |

Exclusions from Warranty Coverage:

Paradigm does not warrant against and is not responsible for, and no implied warranty shall be deemed to cover, any product failure, product malfunction, or damages attributable to:

1. Improper installation and/or failure to abide by Paradigm's installation guidelines;
2. Use of this product beyond normal home use, or in an application for which it was not designed;
3. Cosmetic items such as scratches, dents or discolorations;
4. Damage caused by normal wear and tear, vandalism, accidental or by animals;
5. Any act of Nature (such as fire, flooding, snow, ice, hurricane, earthquake, lightning or other natural disaster), environmental condition (such as air pollution, mold, mildew, etc.), or staining from foreign substances (such as dirt, grease, oil, etc.);
6. Normal weathering due to exposure to sunlight, weather and atmosphere which can cause colored surfaces to, among other things, flake, chalk, accumulate dirt or stains.
7. Improper operation, alteration, handling, storage, abuse or neglect of the products.

Paradigm, using its sole discretion, will either repair or replace free of charge any part(s) proven to be defective under normal home use. Any repair or replacement shall provide no new warranty coverage, but shall retain only the remaining portion of the original product's warranty. This warranty is offered only to the original purchaser and is not transferable. Proof of original purchase is required.

Ordering Replacement Parts

Replacement parts can be ordered by emailing our customer service department:

Service@paradigmhw.com

Open Daily 8:00 AM - 5:00 PM (PST).

When ordering replacement parts please have the following information ready:

- 1. Owner's Manual**
- 2. Model Number**
- 3. Description of Parts**
- 4. Part Number**
- 5. Date of Purchase**

PART REQUEST FORM

Paradigm Health & Wellness, Inc.

EMAIL THIS FORM WITH YOUR RECIEPT OF PURCHASE TO

Service@paradigmhw.com *

NAME: _____

ADDRESS: _____

CITY _____ STATE _____ ZIP _____

TELEPHONE: (Day) _____

(Night) _____

SERIAL#: _____

MODEL#: _____

PURCHASE DATE: _____

PLACE OF PURCHASE: _____

| PART # | DESCRIPTION | QTY |
|--------|-------------|-----|
| | | |
| | | |
| | | |
| | | |
| | | |
| | | |
| | | |
| | | |
| | | |
| | | |

"YOUR ORDER WILL BE PROCESSED WITHIN 3 BUSINESS DAYS"

****This form can also be faxed to #: 626-810-2166***